

Annual Report

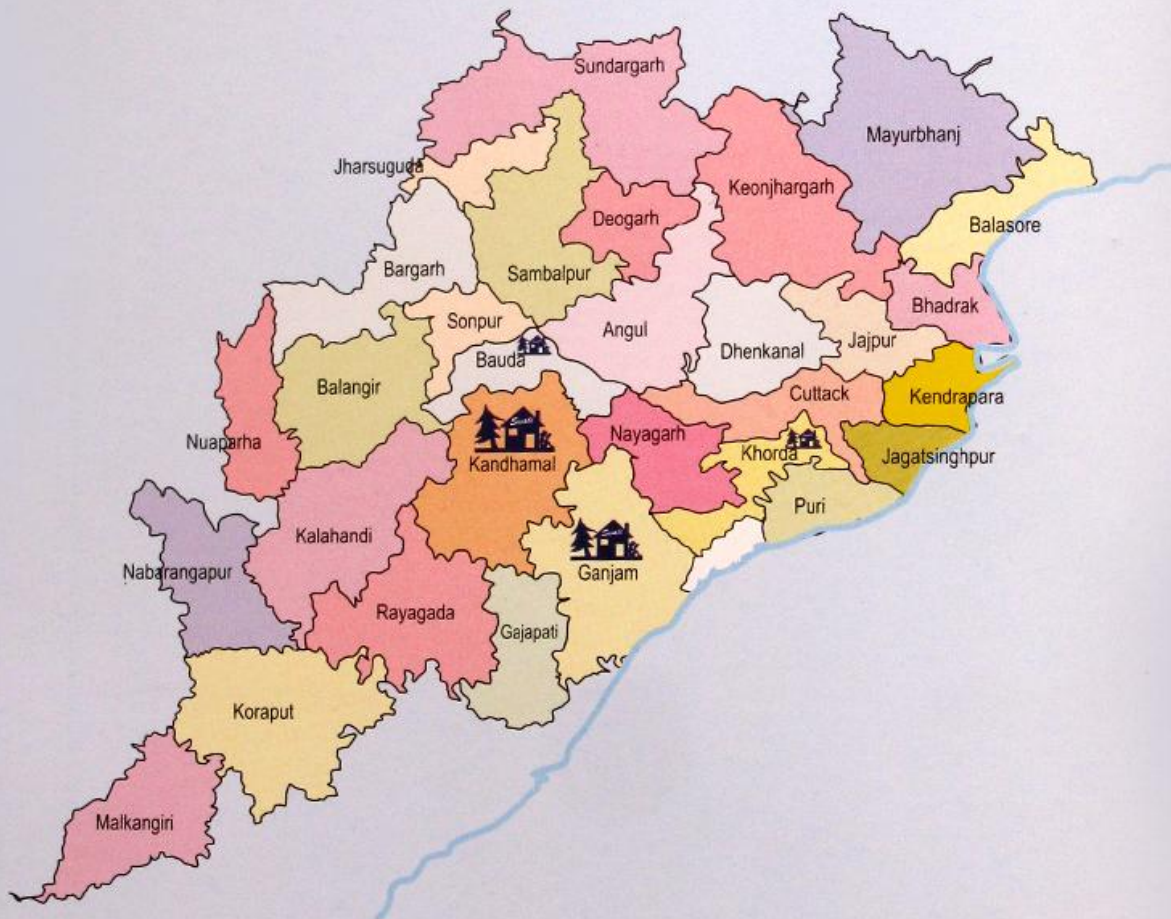
Annual Report 2015 - 16



SWATI

Social Welfare Agency & Training Institute
Kandhamal, Odisha
www.swatiodisha.org

ODISHA STATE



SWATI's Presence in the State of Odisha

Kandhamal - Whole District

Khorda - Bhubaneswar Municipal Corporation

Ganjam - Sanakhemundi Block and Berhampur Municipal Corporation

Boudh - Boudh NAC

Message from the Secretary



It is my great pleasure to share SWATI's Annual report for the year 2015-16 on behalf of the friends and well wishers of SWATI. This year was eventful with new hopes and challenges in our developmental initiative and our mission towards community development. On hindsight, we feel happy that we have been contributing to community development for the last 17 years. We look bemused at the time past thinking of the challenges, the difficulties and the hardship we could overcome. We feel proud that we have been given our best effort and time to serve the partner community.

This 17 year experience gives us the realization that, SWATI is not just an organization; it is a value that carries community interest and vision which reflects sustainable development of neglected community and also a platform to strengthen the common voice. Capitalizing on its experience SWATI has chiseled out definite roadmaps. We are determined to strengthen issue based engagement with the community on the basis of the learning gained over the years.

The year was also eventful with new project beginnings and successful completions of some others. SWATI had successfully completed Maternal Newborn Child Health and Nutrition (MNCHN) project with the partnership of Save the Children and started a new initiative of Tribal Development named Focused Area Development Program (FADP) with the collaboration of ITDA. In this year SWATI also extended its work to urban poor households of 4 urban cities of Odisha i.e; Bhubaneswar Municipal corporation, Berhampur Municipal Corporation, Boudh NAC and Phulbani NAC National Urban Livelihood Mission project. SWATI has also taken lead role in implementing Community led sanitation and Swachha Bharat Abhiyan in Kandhamal district and established a Wash Academy to avail single window sanitation material and knowledge. The diversity of work and activities have given more experience, opportunity and identity to SWATI.

We place on record our sincere thanks to the stakeholders of development in our operational area and donors/support agencies – District administration, DRDA, DWSM, CDMO, Kandhamal, PSU OTELP, Ministry of ST & SC Development & Ministry of Urban Development, Govt. of Odisha, Jagruti, SDDT, Mumbai, OSACS, CARE, TATA Trust, NABARD, SAATHI, OWDM, CWS - TROCAIR, TMST - DFID, NIOS, Save the Children for their co-operation. The year ahead beckon us for dedicated action and commitment and with support and guidance we are determined to bring the changes we have envisaged.

With Solidarity



Er. Hari Sankar Rout
Secretary, SWATI

SAWTI AS A DEVELOPMENT CATALYST

Social Welfare Agency & Training Institute (SWATI) a non-government, Not-for-profit organization has been serving the cause of the poor and marginalized for the last seventeen years. It is registered under SRA, 1860 bearing registration number I.G.R. 21030/169/1999. It is also registered under the foreign Contribution Regulation Act (FCRA), 1976 bearing registration number 105030007/2002, under the 12AA & 80G of IT Act 1961 and under the Employees Provident Funds and Miscellaneous Provisions Act, 1952 bearing registration number OR/BAM/11047/2012 .

Vision

Healthy and self-reliant community life with dignity ensuring equal opportunity, rights, liberty, justice that enables participation, informed decision-making and creates ability to resolve the issue.

Mission

Capacitating the weaker section, especially the women and the tribal through skill building, leadership development, micro credit, natural resource management and increasing demand generation of entitlements with a special focus on enhancing opportunity for sustainable livelihoods and self-reliance.

SWATI has undergone growth in terms of expansion of geographical area and programmatic intervention during the last

17 years. Its engagement with the community encompasses broad sectoral interventions such as: Natural Resource Management, Livelihood Promotion, Health, Governance, Education and Youth Mobilization for Voluntary Action. The Field operation of the Organization is spread across all 12 blocks (Tikabali, Baliguda, Kotagarh, Daringbadi, K. Nuagoan, Phiringia, Phulbani, Tumudibandha, Khajuripada, G.Udaygiri, Chakapada & Raikia) of Kandhamal District, Sanakhemundi Block and Berhampur city of Ganjam District, Boudh NAC and Capital City Bhubaneswar.

Thrust Areas

Development of Livelihood resource base through Natural Resource Management

Creation of Support and Sustainable livelihoods opportunities emphasizing optimum use of local resources

Preventive and promotive health services through people's education, creation of community cadres and streamlining of service delivery

Transparent and Accountable Governance through grassroots mobilization, Rights education, Knowledge and skill building

Formation and nurturing of Community based organizations and their federations

Promotion of the Culture of " Unity in Diversity" through Youth Mobilization



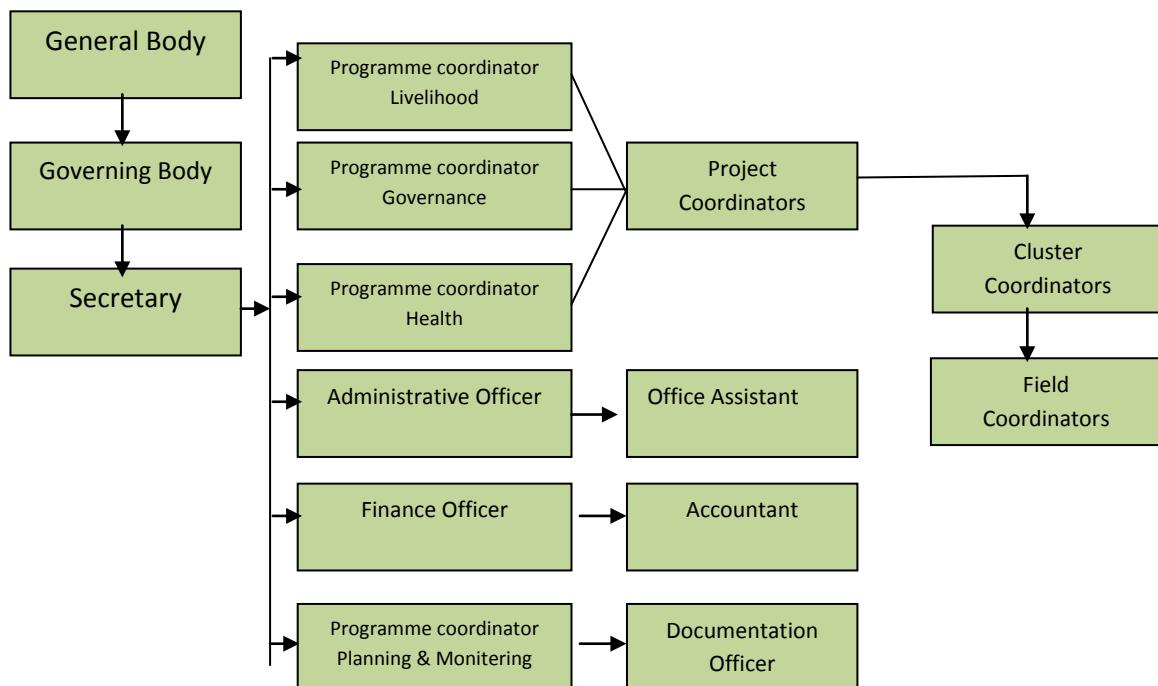
SWATI AS A GROUP OF DYNAMIC DEVELOPMENT ACTIVISTS

SWATI is a platform of strong and vibrant group of development activists, experienced and dedicated workers, professionals and intellectuals. The ratio of women workers are nearly 50%, where as above 70% workers are from the district and working area. SWATI always emphasizes to develop the skills and capacity of the worker through training, workshop and exposures.

SWATI's field operations are organized under different projects in their respective areas of implementation. It has four broad wings i.e Programme, Administration, Accounts and Planning, Monitoring and Evaluation.

The Secretary is supported by Programme Coordinators, Finance Officer and Administrative Officer. Programme Coordinators are supported by Field Coordinators and Cluster Coordinators. Governing Body of the Organisation has Development Professionals and Activists with representation from different social groups. Meeting of the Governing Body is held twice in a year. Governing Body takes Policy decision and deliberates on strategy Issues.

Organisational Structure



SWATI

Social Welfare Agency & Training Institute



Programmes on Natural Resource Management

- Integrated Natural Resource Management
- Integrated Watershed Management Programme
- WADI - Plantation based livelihood Programme
- Land and Water management through MGNREGA

NATURAL RESOURCE MANAGEMENT (NRM)

SWATI believes that development of Rural Community, basically the tribal community depends upon the proper management of the Natural Resources around the village. So it is an important domain of SWATI's intervention. Since its inception, NRM has defined its engagement with the community. Programmatic and strategic intervention underlying SWATI's Natural Resource Management Programme has showcased its approach of placing people and their priorities at the top of the agenda.

In a nutshell SWATI's intervention in NRM has scripted broadening and deepening on its tryst with community development.

SWATI's NRM intervention began around watershed development under Employment Assurance Scheme and Drought Prone Area Programme. It has laid the foundation for attaining the goal of livelihoods and food security through more efficient, equitable, self managed, optimum use of natural Resources.

Integrated Natural Resource Management (INRM)

Natural Resource Management is an approach of careful management of Land, Water, Forest and Biological Resources to sustain Agricultural productivity.

Process: Participatory planning and convergence with MGNREGS are the twin pillars on which SWATI has built the edifice of its INRM Programme

Working Area: 20 Villages of Tikabali Block, 20 Villages of Phiringia Block and 10 Villages of Tumudibandha Block have covered under this project.

Activities: To check Soil erosion, increase ground water level, manage surface water and to increase the fertility of the land structural measures like Loose Boulder structure, Earthen Bunding, Staggered Trenches, 30x40 Models, Dug wells, Farm ponds and land development activities have been done. Similarly plantations and promotion of sustainable Agricultural practice are the vegetative measures promoted under INRM.

Outcome and Impact

- 2400 households of three blocks got job employment and above 20 thousand man days of work received.
- Above 2000 acres of land have developed
- 200 hectares of plantation have developed in 50 villages
- Increase in Production and income of 2400 households
- Irrigation facilities to lands through Dug wells and Farm Ponds
- Water management saved the crop loss and drought like situation in Land
- Sustainable livelihoods of five hundred families through plantation
- INRM Programme has encouraged utilization of Fund under MGNREGS dovetailing it for natural resource management activities generating wage employment and strengthening livelihood resource base.

Post Management of Watershed Area

Following completion of six micro-watershed projects, SWATI is engaged in post management of those Watersheds.

Process: Participatory Planning and Convergence with MGNREGS

Working Area: Six micro-watershed projects covering 3010.375 hectors in Tikabali Block

Activities: Preparation of Village plans through participatory exercise and process to place it in Pallisabha and Gram Sabha. Utilization of MGNREGS funds in land and water management.

Orientation of farmer groups and user groups on improved Agricultural Practice

Skill development of Farmers on compost preparation, vermi compost, mulching etc

Outcome and Impact

- 100 acres plantation of Mango, Hill broom and Cashew plants through MGNREGS
- Increase in Vegetable, Millet and Pulses Cultivation and Production
- Increase in the Practice of Bio-Farming and Mixed farming
- Increase in Cattle and Poultry
- Regenerated vegetation and village forest

Kandhamal is Going Green through Plantation



SWATI has always given importance on Natural Resource Management in all its work and incorporated activities to regenerate it. Since 2010, SWATI has promoted plantation programme through INRM, MGNREGA, Watershed Development, OTELP and WADI project in Tikabali, Phiringia, Tumudibandha and K.Nuagaon Blocks. SWATI has developed 200 Acres plantation through INRM, 1000 acres through MGNREGA, 200 acres in Watershed Development,

200 Acres in OTELP and 1500 acres in WADI development programme. Many Farmers have developed Mango and Cashew orchards and Hill broom patches. It is calculated that within 2/3 years these plots will become productive and will give additional income to the farmers. At the Same time plantations have increased green coverage in the area. Many hill slopes, fallow and barren lands have been covered with trees and plants contributing to ecological balance of the area.

Integrated Watershed Management Programme (IWMP)

SWATI has begun implementing IWMP in Sanakhemundi Block of Ganjam District. This intervention includes geographical area of 6586.93 hectares and treatable area of 5675 hectares. It covers 8040 households of 30 villages in 6 GPs.

Activities: Entry Point Activities such as Travicks Fixation, Solar Light Fixation, Repair of Village drain, Bathing Step, Well Platform & Grain Bank Floor, Construction of Drying Yards and plantation programmes have been taken.

Training to Village leaders, PRA exercise for preparation of DPR, Workshops, Exposure Visits, Mass meetings, Preparation of DPR, Hill Broom plantation under convergence activity have been done under this Programme.

Outcome and Impact: 28 hectares Hill broom plantation in two villages and 50 hectares Cashew plantation in 5 villages in convergence with MGNREGA.

- Construction of 32 Latrines in 3 villages
- Formation of Village development committees and People's Organisation process in 30 villages
- Workshop and Training on leadership development of village leaders
- PRA exercise in 5 villages for preparation of DPR
- Awareness building on SWACHHA BHARAT AVIYAN and Bharat Uday Programme in all 30 villages

WADI

The Programme:

SWATI with the support of NABARD has been implementing WADI programme in Belaghar, Bilamal and Gumma panchayats of Tumudibandha Block of Kandhamal district. This area is the heartland of a primitive tribal group Kutia Kandha, those mainly depended on shifting (Padu) cultivation for their livelihood. So to check this destructive practice and to divert them towards a sustainable orchard based livelihood SWATI is implementing WADI in this area.

Objective: Livelihood and Income security of Poor tribal families from fruit bearing Orchard WADI. One acre model of WADI accommodates 60 fruit plants and 20 forestry plants, which may give both incomes, food and fuel security to a small family and maintain the health of environment.



Process: One acre WADI is developed for Each family on own Patta land. There is *Udyana Vikash Samiti* in village level and WADI beneficiaries of the village are member of the UVS. The UVS supports in planning, execution and management of WADI in village level. User groups have also been formed and assets created under the project.



Working Area: Belaghar, Bilamal and Gumma panchayats of Tumudibandha Block of Kandhamal district.

Activities: Beneficiary Selection and plantation of fruit bearing trees, Formation of New Udyana Vikash Samitis, Follow-up activities of old WADI area and gap filling, Land development activities in WADI field for land and water management, Irrigation facilities for WADI fields, Intercropping activities in WADI fields, Wire fencing and green fencing of WADI fields, Strengthening UVS, Formation of Women SHGs, Skill development training for SHG members, Livelihood support to WADI farmers are the major activities of WADI programme

Outcome and Impact

During 2015, 274.5 acres of 283 families have been included in WADI programme and follow-up activities have been taken in 150 acres of WADI area. 8250 Amrapalli Mango plants and 5000 cashew plants have been planted in 274.5 acres of land during this year. 4000 plants had been supplied for gap filling in the previous year.

500 WADI farmers have done Intercropping in WADI fields. Vegetables such as; Brinjal, Tomato, Beans, Radish, Greenchili, Pumpkin, Cucumber etc, Millet crops like Ragi, suan, pearl millet, small millet, foxtail millet, Kosla, Kueri, Oil seeds like Tila, Rasi, mustard and pulses like black gram, green gram and Kandula has been grown as intercrop in WADI fields. The mixed cropping practice of tribal farmers is strengthened in this process and farmers have revived and multiplied many millet crops. The farmers have also done cash crops like ground nut and potato with the seed support provided by the line departments.

Cycle Mounted Solar Pump encourages WADI farmers for intercropping



SWATI is implementing WADI plantation programme in the tribal heart land of Belghar hill range popularly known as the land of the Kutia kondh. Generally hill slope lands and high lands are taken for WADI plantation which donot have the facility. So SWATI has provided different water lifting instruments to farmers for irrigating the plants and growing of intercrops. SWATI has provided Cycle Mounted Solar Pumps to six villages which is easily transportable and can lift water from

nearby streams, ponds, wells or any water storage place from a distance of 1000 meters. This pump operates on solar energy and is transported by cycle to any place which helps the farmers to take up intercropping in WADI field. Now WADI farmers of Deogada, Sana Kranjikana, Dupi, Sadengi, Pedam and Salapata have increased vegetable cultivation and mixed cultivation in WADI fields. The irrigation facility has checked plant mortality rate and increased soil moisture in the field helping the farmers in adopting mulching, composting and pest management in the field. This initiative of SWATI has provided the impetus to adopt WADI plantation.



Land development work has been completed in 506 acres of land belonging to 535 FRA record holders of WADI farmers. Land leveling, Field bonding, Staggered Trench digging works have been done in WADI fields.

Total 15 numbers of 3.5 H.P water pumps have been provided to 11 Udyana Vikasa Samitis and 10 ring wells have been dug in WADI fields. A solar irrigation structure and 5 nos. of Cycle Mounted Solar Pumps have been supported to 6 UVS for irrigation. Five numbers of Diversion based Irrigation structures have been done in WADI Villages. This facility has been encouraged the farmers for vegetable cultivation in WADI fields.

SDTT has supported Wire Fencing of the WADI fields for protection of the plants from stray animals. The Support has helped in higher rate of morality of the plants. Needless to mention; wire fencing has helped in growing of intercrops.

Women of the households included in the programme have been mobilized into Self Help Groups .The SHGs have been imparted training on record keeping, Fund management, Group dynamics and Income generation activities. The SHGs have been linked with Local Banks and Banking institutions for income generation activities. Backward poultry support has been given to 13 landless families at of 9 villages and vegetable farming support has been provided to 125 families.

This program has given a sustainable way of income through vegetable cultivation and backyard poultry. It has also increased the health and nutrition status of the families. Villagers are less dependent on PODU cultivation and the cultivation area is decreasing gradually.

WADI plantation has provided environmental regeneration and motivated the villagers to live in harmony with nature.



DIVERSION BASED IRRIGATION (DBI)

The Programme: Diversion Based Irrigation (DBI) is a low cost technique to supply water from distant stream to remote villages through pipe for irrigation and drinking water. This technique needs no electricity or fuel to supply water and is easily managed by the community.

Objective: The main objective of the project is to provide water for drinking and irrigation.

Working Area - SWATI has installed 5 DBI structures in Phiringia block in the 1st phase and 4 in K.Nuagaon Block and 8 in Tumudibandha Block in the 2nd phase with the support from SDTT.

Activities: The major activities of this programme are community mobilization process, infrastructure creation, command area development and agricultural support.

Outcome and Impact: Total 232 Households of Tumudibandha Block and 180 Households of K.Nuagaon Block are getting 24 hour water supply for drinking purpose.

150 acres of Tumudibandha block and 121 acres of K.Nuagaon are getting irrigation facility. Total 173 acres of land have been irrigated in rabi season.

The Crop diversity of these villages has increased and villagers are adopting more vegetable, pulse and millet crops. The household food and nutrition security has shown significant improvement witnessed in diversification of the food basket and dietary intake of nutritious food especially by women and children.

Line sowing and SRI method of paddy cultivation has been promoted in these villages. This facility has protected crops from drought and more fallow lands have been put under cultivation.



The drudgery of collecting drinking water has been reduced for women. Now, women do not have to go to far-off places to collect water which saves their energy and time. The increased availability of water for cooking, washing and bathing has improved the quality of their life. Now they are liberated from the back breaking workload and find more time for themselves and for taking care of their children.

The DBI water supply has encouraged the villagers to adopt community led sanitation and Swachha Bharat Awiyan by constructing and using latrine.

DBI Coverage

Block	GP	Village	HH
Tumudi bandha	Guma	Pukur	21
	Guma	Kalang guda	22
	Guma	Pedam	22
	Bilamal	Sanakranjikana	08
	Bilamal	Badakranjikana	24
	Lankagada	Kuabadi	18
	Lankagada	Udayagiri	27
	Lankagada	Bandingnala	90
K.Nuagaon	Bandaguda	3 Villages	140
	Damiriguda	1 village	40
Total	4	12	412

LIVELIHOODS



Programmes on Livelihood Promotion

- Odisha Tribal Empowerment & Livelihood Program (OTELP Extension)
- Odisha Tribal Empowerment & Livelihood Program (OTELP Plus)
- WADI - Plantation based livelihood Programme
- PATHWAYS
- Implementation of MGNREGA
- Focused Area Development Program (FADP)
- National Urban Livelihood Mission

Livelihoods Program of SWATI stands on the tripod of Development and strengthening of Livelihood resource base, Promotion of Livelihood portfolios and Convergence among government schemes and programs. Furthermore; initiatives within the program are backed by systematic analysis of poverty and its causes and informed view on

opportunities and priorities of the partner community. SWATI has undertaken programs like OTELP Extension, OTELP Plus, Pathways, Focused Area Development Programme(FADP), National Urban Livelihood Mission (NULM) and WADI development projects for the development of livelihoods of the community.

Odisha Tribal Empowerment & Livelihood Program (OTELP) Extension

The Programme: The initiative is anchored on convergence with government schemes and programs. Capacity building for empowerment, Livelihood enhancement, Support for policy initiatives i.e.; provision of support for operationalisation of government's existing policy initiative in relation to tribal's access to land and forest products and Development Initiative Fund i.e.; provision for additional fund for well performing activities and activities demanded by the community are the four broad components of the initiative.

Aim and Objective: To ensure household food security and improve livelihood opportunities and overall quality of life of the tribal population based on sustainable and equitable use of natural resources.

Working Area: SWATI is implementing OTELP Extension in 48 villages of 6 panchayats in Tumudibandha Block of Kandhamal District covering 4969.38 hectares of treatable area and 6536 population.

Major Activities: IFAD Top Up assistance Support has been utilized for promotion of income generation activities in different livelihood portfolios such as; Bamboo Craft, Blacksmithy, Carpentry, Goat rearing and Poultry. Special attention has been paid to livelihood promotion of persons with Disability.

Agricultural and Horticultural livelihood promotion programs have been taken in convergence with line departments.

Capacity building and skill up gradation of villagers, Promotion and strengthening of SHGs, Formation and strengthening of Farmers groups and Cooperatives, Vocational Training for Employment Generation

Micro Hydro project for Energy sustainability of Rural Villages has been undertaken in the operational area.

Outcome and Impact

70 Nos. of rural artisan households have been supported for Wooden/Bamboo craft, Blacksmith, Carpentry, Pottery and Plumbing Units.

Special Support has been provided to 13 physically challenged/ ultra poor households for livelihoods enhancement.

35 Households have been provided Low cost housing materials

10 unemployed youths have been supported for Economic units/ activities on various trades such as Agriculture Service center, Electrical shop, Tailoring units, Mobile retails and repairing shops, motor garage and support for vehicles etc and improved Goat

rearing Unit in Two villages. Special support has been provided to 8 Ultra poor households to establish Grocery Shop.

25 Households has been supported for Commercial vegetable cultivation

Creation and development of irrigation infrastructure 10 Diversion Based Irrigation Structures have been established in 10 villages. 6 small lift irrigation projects have also been established in six villages. 21 villages are provided water lifting devices like treadle pumps and Disel/electric pumpsets to lift water from existing water sources.

Village Drainage system improvement work has been done in 3 villages for Habitation Improvement and Sanitation. 280 households have been are supported for Toilet and bath room construction, Water Filters have been provided to 154 families and Cook stoves to 106 families.

For Energy sustainability of rural villages A Micro Hydro project has been established at village Dangarpadar of Tumudibandha GP with 6 Kilowatt electricity production capacity. The total expenditure cost of the project is 21 lakh out of which 18 lakh has been financed under support of SCA to TSP (Article-275A) and rest 3 lakh has been sourced as community contribution in terms of labour. As a result of installation of the project 77 households of Dangarpadar get uninterrupted electricity throughout the day. Now other two Micro Hydro projects are under construction at Kotadaganda, and Bandika villages of Guma GP.



Dangar Padar Villagers delighted with Hydropower

Dangar Padar, a small village near Tumudibandha, situated in the foothill of Bhima pahada is now known as electricity efficient village with its own Hydropower project. Two years ago villagers of this backward village used to suffer a lot due to nonavailability of electricity. Out of 80 household only two had electricity connection and most of the time there was power cut and low voltage problem. The villagers had lived a miserable life without electricity, road connection, drinking water and other minimum facilities. SWATI with ITDA planned to establish a micro hydro-project in the village under OTELP extension project to fulfill the need of electricity.



The power project has been built with the technical support from Practical Action Group of Srilanka, diverting the water from *Bhima Jharan* stream to the power house through Pipe line which generates 6 watt electricity. Total expenditure of the project was 21 lakh rupees out of which 18 lakh rupees has been mobilized from OTELP and rest of the amount contributed by the villager as labour and material. Now each of the 80 households of the village has

been electrified with two bulbs, one fan, one TV connection and a mobile charging point. The village road is lighted with 12 street lights. The community hall and the Anganawadi centre have also been connected and a rice haler is being operated with this hydropower. The school children spend more time in study and there is ease of mobility till late night. Now the villagers feel comfortable with bright street lights, cable connected television, mobile charging and other facilities related to Electricity. The villages have constituted a managing committee and created village fund to manage the project. They have also appointed an operator to operate the machines. This power supply has also supplemented other developmental aspects like Drinking water supply, Sanitation, Irrigation, Agriculture, Health, Education and organizational unity of the village.

Forging convergence with Agriculture department 61 families have been supported for ground nut and paddy cultivation, 30 families have been got support for mustard cultivation from ATMA, 20 families have got support from Horticulture department for mango plantation and sunflower cultivation and 95 hectares mango plantation under MGNREGS, 25 hectares land leveling and bonding through INRM, 373 hectares Potato, Cabbage, Cauliflower, Beans, Banana Plantation with the support of KKDA and 535 hectares Niger, Yam, Foot Yam, Cassava,

Tomato, Brinjal, Reddish & Onion cultivation support from RKVY have also been done under OTELP extension.

As a result of these activities the agricultural production has increased a lot. Many fallow lands have been put under cultivation through land development. Vegetable, Cash crops, Pulses and Millet production have increased. More employment opportunity has been created and annual income of the households has increased. The health and nutritional standard of families have also developed due to consumption of fresh vegetable.



The village level organizations and development committees have been empowered and the level of awareness on government schemes and programs has

increased. People's participation and especially women participation has increased in development processes and panchayat meetings. Flow of government programs and funds to this area has increased through different convergence processes.

The quality of life of the villagers has changed due to safe drinking water facility, village electrification, health and sanitation facilities, supply of modern technological instruments like cook stoves, water filter and solar system etc.

Odisha Tribal Empowerment & Livelihood Program (OTELP Plus)

The Programm - Odisha Tribal Empowerment & Livelihood Program OTELP Plus is an extended project of State government's OTELP project to new areas, mainly operational through convergence funding of different line departments. The goal of the Project is to enable the poor households to sustainably ensure their livelihoods and food security through promoting a more efficient, equitable, self-managed, optimum use of the natural resources, off- farm/non- farm enterprise development and accessing the rights and entitlements entrenched in it.

Objectives: The Objectives of the Project are; to Built the capacity of the marginal groups, to ensure the access of the poor tribal people to natural resources and increase its productivity, to encourage and facilitate off-farm enterprises and To ensure basic entitlements of tribal households.

Working Area: OTELP plus is being implemented by SWATI since 2013 in Tikabali Block. It Covers 32 villages in 6 GPs that come under 10 watersheds.



Activities:

- Building the capacity of SHGs, Farmers groups, Village Development Committees and other grassroots institutions
- Developing the skill and leadership of Community Service provider and Community Resource Persons
- Community Mobilisation for accessing rights and entitlements
- NRM activities to increase the productivity of these resources in environmentally sustainable and socially equitable ways
- Facilitating off-farm enterprise for income and employment generation

- Monitoring the basic food entitlements of tribal households and ensuring their access to public food supplies
- Agriculture and Horticulture development activities for food and nutritional security

Outcome and Impact

Convergence among the departments has provided the anchorage to implementation of the programme. Agriculture Department has provided goods and services like seeds and implements to the farmers. Improved variety of Maize, groundnut and Moong seeds, Implements like Weeder, thresher and hand winnower support have been secured from the department.

Support for shed net, Farm pond, Floriculture, vegetable and onion seedlings, Banana plants and HDPY Vermi bed have been mobilized from horticulture department.

ITDA has provided support for Mango and Hill broom plantation, Onion and Mustard Cultivation for agricultural development, Construction of DBI, KB pumps and Honda Pumps for irrigation, Bore well and Sanitary well, Drying Yard and Broiler Unit in the project area.



Forest Department has supported for maintenance of Plantations.

Odisha Livelihood Mission has provided support for Drudgery reduction activities.

RWSS has provided support for construction of Toilets in Swachha Bharat Abhiyan.

Department has provided support for trainings on agriculture, Krushak Mela and Animal health camps.

SWATI has organized Human Health Camp, Animal Health Check-up Camp, Awareness and sensitization camps on different

government programs and plans, RTI, FRC and Swachha Bharat Abhiyan, SHG and VDC trainings, Exposure visit on Land and Water management, Training on Agriculture, Horticulture, Fishery, Poultry, Gotery, Non-Farm activities and Vocational trainings.

Plantation Under OTELP Plus Agriculture

Activity name	Treatable are	Village/GP	Amount	beneficiary benefited
2 nd Year Mango Plantation 2013 - 14	35.02 Hector	Tlausuga, Jalangia, Mallickpada, Argadi	1425276.00	53
1 st Year Mango Plantation 2014 – 15	30.08 Hector	Bariguda, Pokari Mallickpada, Guttingia, , Kalkabadi	1599302.00	59
Hill Broom Plantation 2014 – 15	25 Hector	Katadi, Tilabangi, Jalangia, Tlausuga, Mallickpada, adepanga	706536.00	43
New Mango Plantation 2015 – 16	30 Hector	Kambaguda, Gudripadi, Kalungia, Birangi, Damiguda, Dorapida	3909090.00	78

PATHWAYS

The Program: The PATHWAY initiative underlines a systems approach focused on a women-responsive agriculture extension for establishing women's identity as farmers, enhancing productivity, promoting their market engagement and empowerment.

Aim and Objective: The Aim and Objective of this project is to increase SC and ST women farmers' productivity and empowerment ensuring secure and resilient livelihoods for the households.

Working Area: The community owned process spearheaded by 194 collectives (SHG, FRC, VSS, Common Interest Groups & Pani panchayat) is being implemented in 49 villages of Tikabali and Phiringia blocks of Kandhamal District.

Major Activities: The Initiative has four major components- Capacity building on Sustainable Agriculture, Facilitating Adoption of Improved Agriculture Process, Strengthening the Collectives and Improving Market Engagements.

Outcome and Impact: Creation of Progressive Farmers and Demonstration plots have facilitated transmission of knowledge and practices on improved agriculture. Fast tracking of adoption of improved practices has been anchored on dialogue and exposure visit initiated by the Progressive Farmers. Progressive Farming facilitated under the initiative has witnessed enhancement in the yield of paddy to the extent of 40 to 50 percent.

Promotion of Kitchen gardening has helped in diversification of food basket and utilization of backyard land and waste water.

Orientation on post collection management practices of Forest produces like Mahua,



Tamarind, Mango etc with emphasis on drying, cleaning, grading and packing measures as well as exposure to market undertaken to build the capacity of the primary collectors on market engagement has helped collective marketing and realization of better market price. Primary collectors of Mahua have enhanced their profit to the extent of Rs.1000 to Rs.4000 per house hold. Similarly market based intervention has helped 516 turmeric farmers enhance their profit by Two lakh Rupees compared to the previous year.

The Poultry brooding centre by Kamala Nehru SHG of Dorapida village has given additional income facility to 10 SHG members of the Village. They have enhanced their additional income by 1000 rupees each. Similarly the SHG members of Malerimaha Village have opened a grocery shop with their own fund group which has given additional income to the group members.

Men with active interest and participation in gender issues have been identified as Male champions. Following their orientation on gender issues through administration of gender tool and mentoring by the CRPs, Male champions have facilitated discussions and dialogue with other men and boys on gender issues.

Orientations on Different welfare schemes, Swachha Bharat Abhiyan and Forest Right Act have increased their awareness on Government facilities. The villagers have actively participated in SWACHHATA AVIYAN

and constructed latrines in houses. Many Villages have also declared as ODF (Open Defecation Free) Village by district administration.

Focused Area Development Program (FADP)

The Programme: The initiative is anchored on convergence with ITDA to plan & support livelihood enhancement projects by converging with various National & State programmes and external donors.

Aim and Objective: Economic development of ST families through implementation of various livelihood enhancement projects with "Individual family/Group of families" as the target group.

Working Area: SWATI is implementing Focused Area Development Program (FADP) in 889 villages of 44 Gram panchayats in 3 Blocks of Phulbani ITDA Area covering 2017.61 square kilometer and 1,87,720 population, out of which the tribal population is 87,176 and 9 Blocks of Phulbani ITDA Area covering 6511.54 square kilometer and 4,50,277 population, out of which the tribal population is 2,45,210 in Baliguda ITDA of Kondhamal District.

Major Activities: Focused Area Development Program (FADP) has four major activities such as; Improved Agriculture, Horticulture, Animal Husbandry and Skill development of Tribal Youth. Maize, Ragi, Mustard, Moong, Onion and Potato Cultivation, Banana and Mango Plantation, Poultry Farming and skill development training are important activities of this programme.

Outcome and Impact:

- 100 hectares Maize cultivation with the support of ITDA at Kajuripada and Phiringia Blok
- 100 hectares Mango plantations at Kajuripada and Phiringia Blok



- 100 tribal farmers have been supported for traditional crop and turmeric cultivation in Phulbani, Kajuripada and Phiringia
- Preparatory Activities for Sansad Adarsha Grama Yojana at Belabadi
- Backyard Poultry for 10 families at Belabadi
- 2 nos of Capacity Building Trainings on Backyard Poultry and Mushroom Cultivation
- Identification of 59 SHGs for Income generation Program and Poultry Farming
- 125 families have been identified for Mango plantation at Phulbani and Khajuripada Block.
- 93 families have been engaged in Pisciculture at Balashkumpa Dam.
- 1200 Beneficiaries have been supported for Mize cultivation in Baliguda ITDA Area
- 200 Beneficiaries have been supported for Ragi cultivation in 200 acres of land in Baliguda ITDA Area.
- 1700 Beneficiaries have been supported for Mustard and Moong cultivation in 750 acres of land
- 225 Beneficiaries have been supported for Potato Cultivation in 56 Acres land and 300 Beneficiaries have been

Annual Report 2015 - 16

- supported for Onion Cultivation in 75 acres of land in Baliguda ITDA Area.
- 205 Beneficiaries have been supported for 200 acres Mango Plantation and 240 Beneficiaries have been supported for Banana Plantation in 60 acres.
- 23 SHGs have been supported for Poultry Farming.
- 199 Tribal unemployed Youth have been sponsored in placement linked employability training course during the year 2015-16
- 201 Pumpsets for lift irrigation and 8 Power tillers have been distributed among the Farmer.

National Urban Livelihood Mission (NULM)

SWATI is implementing National Urban Livelihood Mission with State Urban Development Agency in Bhubaneswar, Berhampur, Boudh and Phulbani.

Aim and Objective: The main objectives of this project are:

- To reduce poverty and vulnerability of the urban poor households by enabling them to access gainful self-employment and skilled wage employment opportunities, resulting in an appreciable improvement in their livelihoods on a sustainable basis, through building strong grassroots level institutions of the poor.
- The mission aim at providing shelter equipped with essential services to the urban homeless in a phased manner.
- In addition, the Mission seeks to address livelihood concerns of the urban street vendors by facilitating access to suitable spaces, institutional credit, social security and skills to the urban street vendors for accessing emerging market opportunities.

Working Area: SWATI is working in 16 wards consisting of 112 slums and 47622 HHs of Bhubaneswar Municipal Corporation and 10 wards of Berhampur Municipal

Corporation, 17 wards of Boudh NAC and 13 wards of Phulbani NAC under NULM

Outcome and Impact

SWATI has started the initial progress of the project by formation of the Team Members and development of internal work plan and formats, rapport building with BMC/NAC and concerned PRI representatives and conducting in-house orientation program e.

An Experienced team consisting of 12 members has been formed for project implementation

Prior to formation of new SHGs SWATI has completed the Assessment process of the existing SHGs in prescribed questionnaire given by the State Urban Development Agency (SUDA). Total 240 SHGs have been assessed and a list has been prepared differentiating SHGs into different categories as per the prescribed format supplied by BMC .

35 SHGs in Bhubaneswar, 12 in Berhampur, 3 in Phulbani and 25 new SHGs in Boudh have been formed. 10 SHGs from Bhubaneswar have submitted their applications for Revolving Fund.



Health Programme of the Organisation was confined to sensitization and awareness building during the initial years of Organisation. Now-a-days among all the sectoral interventions of the organization, Health program holds significance on account of its outreach and diversity. Health programme has helped SWATI deepen and broaden its engagement with the community.

HEALTH

Programmes on Health and Hygiene

- Maternal Newborn Child Health and Nutrition (MNCHN)
- Targeted Intervention Programme
- V4 Sub-centre Programme
- Maternity Waiting Home
- PEHCHAN for transgender community
- AIDs awareness
- Malaria Control
- Diversion Based Irrigation Project
- Community Led Sanitation, Solid Liquid Waste Management, Vegikart
- Wash Academy
- SWACHHA BHARAT AVIYAN

Maternal New born Child Health and Nutrition (MNCHN)

The Project: SWATI is implementing Maternal New born Child Health and Nutrition (MNCHN) project with the support from Save the Children, India. The Project seeking the goal of strengthening Maternal, New born and Child Health and Nutrition services and practices stands on the pillar of Capacity Building, Governance and Accountability.

Objective of the project:

The Initiative is built on the objective of building the capacity of frontline health workers and their supervisors for effective delivery of MNCHN services, increasing health awareness and promoting good governance through strengthened accountability and enhancing quantity, quality and availability of empirical data related to the provision of MNCHN services.



Working Area: SWATI is implementing MNCHN project in 211 villages of 14 Panchayats in Phiringia Block.

Activities: The major activities of this program are: Training on Essential New Born Care and Resuscitation for Health staffs, Refresher Training for PRI members, Training of Mother's committee, Training of GKS members on Preparation of Village Health Plan, Celebration of National

Nutrition Week, National Breast feeding Week, Refresher ToT for master Trainers on MNCHN, Population Fortnight Campaign, Facilitation of Inter-Sectoral Meetings of ASHA and AWW, Observation of New Born care week, Panchayat level Awareness Programme, District level Media workshop, Training of NGO staffs on Accountability and tracking, Training on Quality VHND, PRI Convention, Public Interface on MNCHN services, Training of AWW, ANM, ASHA and other Health workers for effective service delivery, Training of PRI members on Monitoring of village Health plan, Quarterly Review of Village Health Plan, Street Play disseminating the messages on MNCHN, Development of IEC materials, GKS review meetings and strengthening of VHND.

Outcome and Impact

Capacity building on quality home visit and counseling, handholding support and distribution of Bi-cycle and counseling handbook have resulted in three-folds increase in number of home visit by AWW & ASHAs.

Uses of home visit registers, Flip Book and HNBC forms have increased nearly eight-folds as well.

Skill lab on Newborn Care has been established in Phiringia CHC to strengthen Newborn Health Care services. The Skill Lab

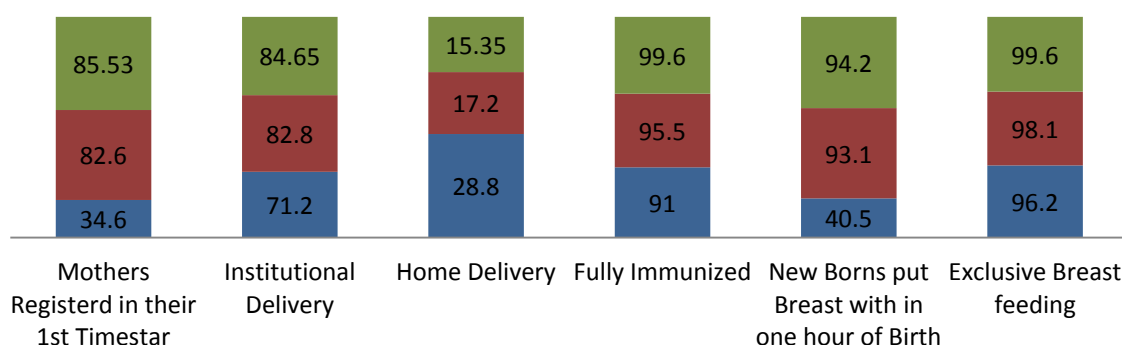
provides hands-on knowledge and skill on newborn care and practices to the frontline health workers. The lab is being used for management of low birth weight, birth asphyxia and neonatal jaundice.

The initiative has been able to increase participation of the PRIs in MNCHN services, enhance basic knowledge of the frontline service providers on health and nutrition and streamlining of service delivery, clarity among the members of GKS on their role and responsibility, better utilization of the GKS fund, change in the knowledge, attitude and practices among the community on health and nutrition in institutional delivery.

SAM STATUS & CHILD DEATH

- 59 AWCs are free from SAM child while 34 AWCs have only one SAM child out of 139 AWC in our intervention area.
- 6.12% of still birth out of 1181 deliveries In the year 2015.
- 89.9% (897 out of 997) children initiated complimentary feeding at the completion of 6 months.
- 90.24% (Out of 164 delivered at Home FLW visited 148) of the newly born babies were seen by a health worker within 48 hours of delivery (for those who delivered at home) .

KEY INDICATOR WISE STATUS OF MNCHN (COMPARED WITH BLS & END OF 2015)



Key Achievements on adolescent programme



Swati has been implemented Adolescent programs in 6 vilages of 6 GPs in Phiringia Block under MNCHN project. Under this activity trainings have been given to adolescent boys and girls in Lalitha and Babu Module. 13nos of village level sessions have been completed within the time period. The themes of the training sessions were

- Parents meeting have been conducted in all the scheduled villages.
- 06 Sessions held by Discussion Leaders in the Parents meeting.

- Cultural Programmes conducted in 06 TRW Schools by Boupanga & Dangarapada Adolescent Discussion Leaders.
- Six numbers of book bank have been started at the six L & B intervention villages in MNCHN area.
- Conducted Lalitha & Babu Mela through local traditional play on Child marriage, Communication, Discrimination etc.
- Stopped 8 numbers Child marriages through Lalita & Babu intervention at Boupanga-2, Khajurigaon-1, Chadiapali-1, Sadingia-3 & Rabingia-1

ADOLESCENT ACTIVITIES in PHIRINGIA BLOCK: (LALITA and BABU Approach)

No. of GP	6
No. of Village	6
No. of Adolescent GIRLS (10-14 Yrs.)	83
No. of Adolescent BOYS (10-14 Yrs.)	79
No. of Adolescent GIRLS (15-19 Yrs.)	75
No. of Adolescent BOYS (15-19 Yrs.)	88
No. of Discussion Leaders (10-14 Yrs.)	24
No. of Discussion Leaders (15-19 Yrs.)	24

V4 Sub Center Management

The Programme : Addressing unmet health needs of the 4 most vulnerable category in key service areas such as: Maternal Health, Child Health, Family Planning, Adolescent and Reproductive Health, Prevention and management of RTI and STI.

Objective: The initiative has well orchestrated objectives to complement and supplement health service effectively at V4 Sub-center level, Promote Community participation in national health programs, strengthen referral service for primary health care, promote health seeking knowledge, attitude and practices through

client centered and integrated public health communication, encourage institutional service seeker and service provider at community level, encourage innovative initiatives to address the health need issues at community level and strengthening liaison and coordination with health institutions.

Working Area: SWATI is Implementing V4 Sub Center program covering 1848 households of 27 villages and 81 Hamlets in Indragada, Ranaba & Badabaraba Sub-centers.

Activities: Home visit with ASHA and ANM to improve ANC Coverage, ANC facilitation at nearby health institution, provision of local referral transportation service and Facilitation of institutional care of identified high risk pregnant women and infants.

Strengthening Community initiative (handholding support to grassroots service providers and people's committees) and training of frontline health worker and community leaders.

Organization of events for demonstration of nutritious foods, Promotion of health-seeking behavior through development and distribution of IEC, Cultural programmes and

facilitation of Village Health and Nutrition Drive Camps

Impact and Outcomes:

- 3928 numbers Home Visit by ASHAs and 328 by ANMs have improved the ANC Coverage in the area.
- 125 ANCs have been facilitated at nearby Health Institutions.
- 26 Pregnant Mothers have been facilitated for referral transport services
- 112 Pregnant women have been facilitated for Institutional Delivery
- 19 High risk pregnant women and 7 high risk children have been assisted
- 427 Gaon Kalyana Samiti meetings and 23 Block level trainings have been conducted.

Maternity waiting Home (MAA GRUHA)

Objective and Activities: Increasing rate of institutional delivery as a development goal has a universal consensus behind it. Establishment of Maternity waiting homes in remote and inaccessible areas has been one of the initiatives designed under National Rural Health Mission to increase institutional delivery so that maternal mortality as well as Neo Natal Mortality could be reduced. SWATI has established Maternity waiting Home at Balandapada of Phiringia Block in August 2013.

Working Area: The outreach area of the Maternity have covers six panchayats i.e; Luising, Balandapada, Pahiraju, Krandidali, Gochhapada and Salaguda.

Outcome and Impact: Maternity Home not only provides accommodation facility to the pregnant mother, days before the expected date of delivery but also health care services by trained health professionals and includes provisions of nutritious food for the pregnant mothers.



The responsibility holders of the Maternity Home have been able to built rapport with the government duty bearers (Doctor, Staff, Nurse, ANMs), grassroots health service providers (ASHA, AWWs) and the Community, Panchayatiraj Representatives and leaders of the CBOs like SHGs & GKSs, The Coordinator and the Attendants participate in ICDS sector meetings and ASHA sector meetings. They also participate in VHND sessions. The Duty bearers of the PHC advice the expecting mothers to get

admitted in the maternity home. There are instance of reluctance on the part of the expecting mothers and their families to come to the Maternity Home before the date of delivery.



The ASHAs, AWWs and the ANMs intimate the responsibility holders of the Maternity Home regarding such reluctance following which the Coordinator

reaches out to the family and counsels its members. The Maternity Home has been able to gain appreciation among the community which is evident in Sarapanch, Naib-Sarapanch, AWWs, ASHAs, ANMs and community leaders paying visit to the Home.

- No. of Pregnant Women admitted to Maternity Home – 207
- Percent of Occupancy – 73
- No. of Institutional Delivery – 197
- No of Normal Delivery – 193
- No of High Risk Pregnant Women – 35
- No of Cases referred to DHH - 2

Maternity Home gave Janaki a safe Motherhood



When Janaki Digal with her newborn baby took farewell from the maternity home, her eyes flooded with tears of both happiness and separation. She was happy for her safe motherhood but felt emotional as she had to leave Maternity Home mates and sisters, where she had spent her pregnancy period with lots of care and affection.

Janaki, a 25 years old lady is a resident of Pahiraju village, about 10 kilometres from Balandapada. The village is situated in the

remote forest area and has been deprived of all health and medical facilities. The villagers follow traditional practices in delivery and child care and feel reluctant to take any pregnancy care and medical delivery. So Mother and child mortality rate is very high in this area. The staffs of the maternity home at Balandapada tried hard to convince the family members of Janaki to send her to Maternity Home for safe delivery. After lots of meeting and counselling they agreed and Janaki came to Maternity Home with many fears in her mind. But within few hours her fear vanished as she met many other pregnant mothers there and got homely affection and assistance from them. She got healthy foods and accommodation, time to time health check up at the medical, television and games for recreation and child care learning in maternity home. After one month she had a normal delivery and gave birth to a healthy child. According to her, she could not imagine that she would get such facility for her delivery.

Targeted Intervention (TI)

The Project: SWATI is implementing Targeted Intervention (TI) project for female sex workers (FSW) in partnership with Odisha State AIDS Cell (OSACS) has entered into sixth year in 2015-16.

Objective: The project is being implemented with the overall objective of the NACP-IV i.e; to halt and reverse the epidemic by integrating programme for prevention, care, support and treatment.

Working Area: The project is being implemented in 5 blocks of Kandhamal District – Khajuripada, Phulbani, Phiringia, Tikabali and G.Udaygiri covering 350 female sex workers out of 535 line-listed.

Activities: Condom Promotion (Promotion/Distribution of Condoms)- Condom demonstration and distribution, Social Marketing and Establishment of Condom Outlet.

Behaviour Change Communication – Develop Inter-personal Behavior Changes Communication, Community Mobilization and IEC activities.

STI Clinic- Provisions of services for Sexually Transmitted Infections.

Referral and linkage (Referral Services) – Establishment of Drop-in Centers, Establishment of STI clinic and Organizing Health Camps. Linkage to Integrated Counseling and Testing Centers (ICTC)

Creation of enabling environment (Advocacy for Enabling Environment) – One to One session and One to group Session & FGDs

Community Mobilisation. Mobilize and enroll more and more TGs through counseling.

Organization of Hotspot level monthly meetings, capacity building of staffs,

condom programming (Condom demonstration, distribution, social marketing and condom outlet), BCC interventions at the outreach level to increase the level of understanding on the routes of STI/HIV transmission and its relation to sexual practice, Referral and linkage with ICTC and FICTC.

Organisation of Health camps, streamlining of STI Clinics and distribution of colour coded kits, creation of an destigmatized environment that facilitate linkage of vulnerable groups with social security schemes.

IEC through development and distribution of public education materials and holding formal and informal sessions and dissemination of messages through organization of community events (Celebration of World AIDS Day, International Women's Day etc.).

Organizing Project Monitoring Committee (PMC) meetings to evaluate and access project progress at regular interval. Organisation of crisis management committee meetings to address and overcome certain crisis of the TGs.

Achievements of this Year

Hot Zone	High Volume	Medium Volume	Low Volume	Total
Phulbani	19	45	1	60(65)
Phiringia	12	51	1	60(64)
Khajuripada	7	52	5	60(64)
Tikabali	14	43	4	60(61)
G.Udayagiri -1	16	44	2	60(62)
G.Udayagiri - 2	7	46	2	50(55)
Total	75	281	15	350 (371)

Achievements

Condom Distribution vs. Target	<ul style="list-style-type: none"> No. of Condom outlets = 12 Traditional Outlet = 8 & Non Traditional Outlet = 4 Requirement of Condom :-95,543nos Condom distribution through outlet:-2,500nos Free condoms distributed = 84,980nos Condom Gap Analysis & distribution plan is in place = yes Status of weekly reports submission to OSACS & NACO= All reports submitted in time.
No. of Health camp conducted	3 nos of Health Camp conducted at Kelapada & Seskajodi of Phringia Hot zone & Dimirikhol of Khajuripada Hot zone. In 3 Health camps 49 HRG & 102 persons got treatment
crisis addressed	4 crises management meetings conducted in the year, but no case has been registered.
Year Achievement	Found one positive case in our intervention area and referred to ART Bahrapur. We also have linked with PDS system and pension scheme. Steps have been taken to enlist her with Biju Pucca Ghar Yojana.

PEHCHAN



Objective and Activities: The initiative of SWATI under PEHCHAN project during the year has capitalized on solidarity building among MSM, Hinjras and Transgender Community. The efforts made in the past in term of bringing together the hitherto unorganized community has helped in increasing the reach and quality of service under government schemes and programmes, strengthen prevention and care services and create enabling atmosphere of non-discrimination and de-stigmatization. Following formation of MAITREE (A CBO of MTHs) and its

registration, the effort under the project has been streamlined towards developing the knowledge and skill of the partner community on organization building and development so that they can manage their organization independently.

Outcome and Impact: During the Year Program implementers of SWATI attended trainings on documentation, CMIS, Financial reporting and counseling organized by SATHII. Strengthening the CBO for project management, organization of Group meeting to disseminate message on safe sexual practices and health and hygiene, facilitation of regular interaction among MTH in Drop in centers (DIC), advocacy on decriminalization of sexual behavior of MTHs (Article 377) involving police, media, advocates, health care service providers, Celebration of World AIDS Day and Human Rights Day, Development and distribution of IEC materials have been done during the project period.

Community Led Total Sanitation (CLTS)

The Program: Community Led Total Sanitation programme is a clean movement initiative to improve the health and sanitation of the villages with specific emphasis on making the villages Open Defecation Free (ODF). Implementation of CLTS has complemented SWATI's initiative in Clean Kandhamal Movement and in Diversion based Irrigation, a flow based pipe water supply system that has addressed household water needs.

Objectives: The main objectives of this program are - Demonstrate ODF implementation in villages, develop motivators capability to undertake ODF implementation in villages and also give continuous sanitation support to the village after ODF is achieved, provide linkages and support for toilet construction materials and supplies at district level and with the WASH Academy and provide linkages and facilitate access to toilet construction incentives that are available for households at district and block level from state government.

Working Area: SWATI is implementing Community Led Total Sanitation program in

4 Gram Panchayats in K. Nuagaon block and 3 Gram Panchayats in Tikabali block of Kandhamal district.

Activities: Building awareness among the villagers on sanitation and Toilet use, training to volunteers on ODF process, Conducting ODF process at the Village level, motivating the villagers for Toilet construction, providing linkages and support for toilet construction materials and supplies at district level and with the WASH Academy and facilitating access to toilet construction incentives that are available for households at district and block level from state government and taking activities on solid liquid waste management.

Impact and Outcome:

- The ODF process has been completed in 9 new villages of Tikabali Block and 3 new villages of K.Nuagaon Block.
- 15 villages are declared as Open Defecation Free Village
- 730 Latrines in K Nuagaon Block and 435 Latrines in Tikabali Block have been constructed.

ODF Status

SL.NO	BLOCK	G.P	VILLAGE	TOTAL HH	ODF
1	TIKABLI	PADANGI	KAMBAGUDA	48	ODF
2	TIKABALI	PADANGI	GUDRIPADI	88	ODF
3	TIKABALI	PABURIA	DUPEPADA	27	ODF
4	TIKABALI	PABURIA	PIPALSAHI	39	ODF
5	TIKABALI	GUTTINGIA	BALUMAHA	26	ODF
6	K.NUAGOAN	BONDAGUDA	DADI	61	ODF
7	K.NUAGOAN	CHANCHEDI	KELEBALI	25	ODF
8	K.NUAGOAN	BONDAGUDA	SASIMAHA	47	ODF
9	TIKABALI	PABURIA	MALERIMAHA	89	ODF
10	TIKABALI	PABURIA	ADASUGA	40	ODF
11	TIKABALI	PABURIA	BARIGUDA	159	ODF
12	TIKABALI	PADANGI	KALUNGIA	55	ODF

Gargadi Declared as First ODF Village of the District

When the villagers of an unknown and undeveloped village Gargadi of K.Nuagaon Block declared them as Open defecation Free Village by restricting open defecation and constructing toilets of their own, they drew attention of whole district. It was not so easy for them to maintain toilets in the family as they were not acquainted with it and were neither educated nor economically sound. They manage their family with income from agriculture and forest produces. Even they did not have road to their village, not even drinking water facility, school, Anganawadi centre. Still they decided to achieve their own plan for village development by constructing and using toilets. Manisha Rani, a young activist of SWATI motivated the villagers to achieve this difficult task and at last they have succeeded.



The villagers took a decision to construct toilets. They formed a sanitation committee and made rules and regulations. Their effort got prominence in local media and the District collector visited the village. He noticed the determination of the villagers for sanitation and sanctioned a drinking water project, approach road and 12,000 rupees for construction of each toilet.

Now Gargadi village is well known as a leading village on sanitation in the district. Each household has its own toilet and there is a common toilet for outsiders. The youth group is maintaining the village cleanness. The district administration has provided a solar operated drinking water project and constructed the village road. Now the nearby villages have also followed Gargadi. Manisha Rani has been nominated as the brand ambassador of sanitation drive in the District by the administration.

SWACHHA BHARAT ABHIYAN

SWATI has been actively participating in Swachha Bharat Abhiyan drive in the district by creating community awareness, implementing Community Led Sanitation programme, making villages Open defecation free, establishing WASH academy, Organising district and block level workshop and Interface programme, constructing toilets through different programmes, providing water facility to villages. SWATI

has also provided skilled workers and activists to block administration to gear up the sanitation drive. Kapilash Behera, one of the senior workers of the Organisation is now engaged as block supervisor in Tikabali Block. He has set a target to construct 12789 latrines and has completed 3289 already. Similarly Ramesh Chandra Behera has been supporting the villagers in latrine construction by providing sanitary materials.

WASH ACADEMY – Parimala Pratisthana

The Project – SWATI has established WASH ACADEMY an institution of sanitary material production and technical knowhow of sanitary construction which has been managed by tribal women supported by DFID and TMST with technical support by CORE, Odisha.

Objective: The main Objectives of WASH ACADEMY are; to Produce environmental friendly, economically viable and quality sanitary materials, to develop the skill of local masons and create new women masons in the locality, to disseminate knowledge on sanitation and technical knowhow among the villagers and to set a self sustained production Unit managed by the Women Group.

Working Area: SWATI has established the WASH ACADEMY at Damiguda Village of Paburia Gram Pachayat.

Activities: The major activities of this program are: formation and strengthening of Women SHG federation, selection of production Group for Production of sanitary elements, production Training, mason training, federation management and book keeping training, exposure visit on sanitary materials, material Production and management, enterprise management and business development training, trainings of Local mason and women on toilet construction, market linkage of materials, building awareness on sanitation and toilet use in villages.

Outcome and Impact

WASH ACADEMY, an enterprise of women on sanitary material making has been established at Damiguda of Paburia GP. The Academy has been managed by Baduwadi Mahila Mahasangha, a women federation of the area.

The members of Baduwadi Mahila Mahasangha have been trained on federation management, book keeping,



enterprise development, business promotion and market linkage.

20 Women of the federation are well trained on brick making, ring making, sky light making and Brick machine Operation. The Academy has produced 8 thousand special types of brick and 200 cement rings in training period.

Now the Academy is capable to produce sanitary materials according to market demand. The quality material produced by Academy has a big demand in the locality. Now many customers are giving advance to purchase their materials.

Now the Academy has established its position as a one stop outlet of sanitary material in the district. The district administration has also appraised its work and given opportunity to construct latrines in the area. Six members of the federation participated in the state level workshop for sharing of the WA model for triggering effective supply chain mechanism in the sanitation sector.

41 local masons including 20 women have got two round mason training and are well trained on toilet construction in the area. The skill and income capacity of the masons have increased. They are also helping to promote the WA through selling the sanitary products produced by WA.

There is a huge scarcity of sanitary materials and Masons in the area because of Swachha Bharat Abhiyan Drive in the district. The villagers are not getting quality materials and masons to construct toilets. So the Academy is now fulfilling the demand of sanitary materials and mason in the area.

The Academy is also spreading the technical knowhow of sanitary construction and message of cleanness among the villagers. It is also demonstrating its material in district and block level exhibitions to attract the customers.



SOLID and LIQUID WASTE MANAGEMENT

The Project

SWATI is disseminating Solid and liquid waste management practices in its project villages of Tikabali Block to change the behavioural practices of community and to establish a community level waste management mechanism.

Objective

The main objective of this programme is to establish Solid and liquid waste management practice and techniques at the community level and to manage solid and liquid waste by using local and low external technology and to maintain clean and hygienic environment of villages.

Working Area

24 villages of Paburia and Gutingia panchayats of Tikabali Block



Activities

The major activities of this programme are community level awareness building and community counseling, orientation to GKS, BNV, VDC and VWSC members on SLWM techniques, selection and capacity building of village level SLWM technicians, rapport building and liaison with govt. institution and local self governance and extending technical knowledge of Solid & Liquid Waste Management to the villagers.

Outcomes and Impact

- Increased awareness on solid liquid waste management among GKS, BNV, VDC and VWSC members
- Dissemination of Technical knowledge of Solid & Liquid Waste Management have been accumulated project villages
- The SLWM Beneficiaries have stopped their earlier practices and village development committees have created awareness among people.
- In 21 Villages people use Compost pits for home and agricultural waste management, soak pits for waste water management, use waste water in Kitchen gardening and by community compost pit for village cleanliness.

Governance

The Project :

The Project PRI, Good Governance and Social Justice supported by TROCAIR through CWS-ORC, Bhubaneswar is being implemented by SWATI in Kandhamal District.

Objective:

The main objective of this project is to empower, educate, aware and organise the community enabling them to access their citizen rights and government programmes and schemes and to participate actively in governance process.

Working Area:

SWATI has been implementing this project in two GPs (Paburia and Gutingia) of Tikabali Block consisting 21 Villages, 28 Hamlets, 1370 households and 7638 population.

Activities:

SWATI with its initiative under the project based intervention has strived to strengthen the structure, system and procedures of governance imparting capacity building trainings to PRI members. Sensitization, Knowledge and skill building of the community and handholding support for realization of rights and entitlements are the mandates of the initiative. Constant endeavour in strengthening community based organisations and networking of CBOs to create a pressure group and facilitation of planning and its execution has impacted the lives and livelihoods of the partner community.

Outcome and Impact:

SWATI has facilitated preparation of Village level plans and their incorporation in Panchayat and Block level planning. It has also promoted two Panchayat level Committees and has formed a block level federation of Taskforce members. In the



District level Media advocacy and interactive Workshop the PRI representatives raised the issues and concerns with regards to non-devolution of power to the PRIs in general and absence of ownership rights of the Panchayats over assets created under government schemes and programs. The Taskforce committees encourage and motivate the people for participation in the process of governance and facilitate access to their rights and entitlements.

Observation of World Women's Day at Paburia with 700 women participation and felicitation of best SHG, Women Leader and PRI (Women) member.

Two training programme on " RTI/PUBLIC HEARING" has been organized at Paburia and Guttingia. Events on Prime Minister Jan Dhan Yojna in different villages of Gutingia and Paburia have been organized and 682 numbers of Accounts have been opened. Swacha Bharat Abhiyan activities organized in 21 villages of the 2 G.P.

50 hectares community FRA land development work has been done in Paburia and Gutingia G.P and Preparation of IPPE in 21 villages has been completed.

Block level workshop on Devolution of power to PRI have been organized chaired by Panchayat Samiti Chairman and Local BDO.

Good Governance initiatives boosted the people's power

Now the Common villagers of Gutingia and Paburia GP are well versed on the process and procedures of local self governance and actively participate in Pallisabha, place the job demand, raise voice against corruption. This success is the result of SWATI's initiative on empowering the people for Good Governance and Social Justice. Due to this process villagers of these two panchayats access more government facilities and



supports compared to previous electoral term. In this five year term 126 old age pension, 48 Disability Pension, 97 Widow pension, 24 Harischandra Yojana assistance, 236 Indira Awas houses, 11 Mo Kudia, 16 Biju Pucca Ghar, 1422 acres land in 697 FRA land titles, inclusion of 1983 families under NFSA, job demanded by 5907 families, completed 100 days work by 1862 families, filing of 110 RTI application have been done in Paburia and Gutingia Panchayat. The women of these panchayats are continuing anti-liquor campaign in the area and vociferously demand liquor prohibition.

Achievements of the Year

Activities Accomplished	Villages/HH/status
Monthly G.P Level Task Force meeting	16
No of families completed 100 days of work	56
No of people and TFC used RTI	3(3villages)
Block level social audit, MIS Meeting	14
VDC label awareness camp on swach Bharat	21 Village
Landless HH obtained Patta	59 out of 121 (6 villages)
Eligible tribal HH claimed forest land Community rights settled	697 out of 947
Individual house hold lateen completed	Paburia-215, Guttingia-325

National Institute of Open Schooling (NIOS)

SWATI has established a Study Center under National Institute of Open Schooling (NIOS) at Bandhagada helping the dropout children gain access to formal education. The study centre supports in enrolment, examination, registration, study material distribution and provides personal contact programmes and conducts practical examination. Organizing workshops and training programmes, it creates friendly environment between students and facilitator and through direct contact with the learners facilitates smooth communication.

During 2015-16 Academic Year 95 students have registered them with study centre. Total 637 students have been registered in NIOS, Out of them 507 Students have appeared the examination. Total 207 students have passed out from the Institute and 226 students are continuing their higher study.

The Study centre provides opportunity to service holders like AWWs, ANMs and Home Guards to get promotion.

ANTARANG YOUTH CLUBs/VOLUNTEERS

The Programme Bharat Nirman Volunteers' has been a successor of a similar programme Antaranga, that was implemented by SWATI. Antaranga mobilized the youths imparting them exposure and broad understanding enabling them to take on constructive roles in nation building. Youths mobilized under Youth clubs were imparted knowledge on government schemes, programmes and provisions of handholding support for realization of rights and entitlements. Capitalizing on the experience, SWATI is facilitating Bharat Nirman Volunteers Programme.

Bharat Nirman Volunteers



The Project : SWATI has been facilitating the initiative of Rural Development Department through promoting Bharat Nirmana Volunteers. Under the initiative one youth volunteer has been promoted for every 10 households. SWATI facilitate the programme in Tikabali and Phiringia block of Kandhamal district.

Objective: The main objective of this programme is to engage the youth mass in village development and in maintaining village level peace and harmony supporting the community in natural disaster and calamities and participating in nation building.

Working Area: Phiringia and Tikabali Blocks of Kandhamal District

Activities: Orientation of volunteers on government programs and provisions, village organization development, conflict resolution, leadership and voluntary actions.

Outcome and Impact: 60 youth volunteers of Phiringia and 350 youth volunteers of Tikabali block have been oriented on government schemes and programmes, people's right and entitlements.

The Volunteers have taken up village cleaning, cleaning of village pond, cultural and sport events at the village level.

The Volunteers have organized observation of national and international days and village level festivals.

The Bharat Nirman Volunteers have organized awareness campaign on Swachha Bharat Abhiyan, Malaria prevention, MGNREGS and Forest Land Right Act.

STUDY RESEARCH AND DOCUMENTATION

With the broadening and deepening of the developmental interventions SWATI has enriched its internal as well as external documentation. It prepares quarterly, half yearly reports and publishes Annual report of the organization.

SWATI has published “Eei Matira Katha” and “Jibanadhara” books on Livelihood and Health. SWATI has also published posters, brochures and leaflets on MNREGS, FRA and PESA, Malaria, AIDs, Environment and Swachha Bharat Abhiyan. SWATI has published hand books on Jangala Jami

Adhikar (Odia), developed and distributed public education materials on MGNREGS, Mother and Child health and Women rights. SWATI has prepared Audio Visual Documentary on MGNREGS, Agriculture, DBI, Tribal Development, WADI, Hydro Project, Maternal Newborn Child health and Nutrition and Malaria. SWATI has also developed an audio CD on different development themes. To educate the villagers and to disseminate information SWATI has opened panchayat level information centers and public library.

WAY FORWARD

SWATI has completed 17 years in the community development process and in the service of the disadvantaged section of the society. The Organisation over the years has grown with more people getting associated bringing their experience, expertise, commitment and dedication. The experiences of hardship and challenges have renewed SWATI’s own commitment and dedication to the cause. As development is considered a never ending process SWATI feels that there is a long way to go. There are many works to be done and issues to be solved in the future. Rooted in a systematic analysis of poverty and its causes, strengthened with informed view of opportunities and priorities of the people and anchored on community owned process, SWATI’s initiative in community development cuts across different domains of Natural resource development, Livelihood promotion, Health, Water and Sanitation and Youth Voluntarism.

Marginalisation of the partner community is primarily on account of the deprivation of basic facilities that require setting up a community owned process around issues of rights and entitlements. SWATI plans to strengthen its foundation of issue based engagement with the community on the basis of the learning gained over the years in grounding of such a strategy. It is felt that the community leaders need to gain knowledge and skill to lead the process of PME. Transfer of knowledge and skills to the community, it is envisaged would help in participatory monitoring of the government schemes and programmes leading to tangible livelihood outcomes.

The gender focus of the Organisation aimed at leadership building among women, enhancing women’s participation in decision making, promotion of entrepreneurship and creation of positive attitude towards women leadership has created an enabling condition for gender mainstreaming to be taken up in the coming days.

With the realization that skill development provides impetus to income generation, SWATI would like to create scope and opportunities for skill building among its partner community.

SWATI has plans to focus on Network building among the like minded civil society organizations and facilitate network building among people’s organizations working in the issues of right and entitlements.



AN APPEAL

SWATI, a non-governmental voluntary organization has been working since 1997 in the field of Tribal and Rural development. Its initial engagement in the Natural Resource Development has broadened its programme and activities as well as its perspective helping its take a holistic approach of the lives and livelihood. The present shift has been towards adoption of the livelihood approach rather than a sectoral approach to resource management.

Not only there has been adoption of a holistic perspective, the interventions during these years have established models for propagation and replication. SWATI has planned for further diversification of its activities in the coming days. Keeping in mind the recent change in the society; SWATI has planned to establish an Old Age Home and a Shelter for Homeless Children. Its modalities will be worked out further, once the idea gets across and the individuals and organizations build partnership with SWATI for the cause.

SWATI solicits donations from individuals as well as organizations to contribute for the noble cause. The Organization has been registered under 80G for the donor and contribution to get exemption as per the provision under Income Tax Act.

At the same time SWATI pledges to remain accountable to the donor and contributors and promises to take all the measures for effective utilization of the funds so that the noble cause for which the contribution made is realized.

Social Welfare Agency & Training Institute (SWATI)

Regd. Office At: Trinath Temple Street, PO: Gosaninuagaon, Dist: Ganjam, Pin:760003, Odisha.
Project Office: At/Po: Paburia, Dist: Kandhamal- 762112 (Odisha)

Receipts & Payments Account for the Year ending 31st, March 2016

Receipts		Amount (Rs)	Amount(Rs)	Payments		Amount (Rs)	Amount (Rs)
To	Opening Balance			By	Programme Expenses (As per Annexure-I)		
	Cash in Hand	3,442.00			TI-FSW,Phulbani	11,89,076.00	
	Balance with Bank	107,52,820.36	107,56,262.36		MGNREGS	15,152.00	
To	Grants-in-Aid (As per Annexure-I)				Solid Liquid Waste Management	9,67,210.00	
	TI-FSW,Phulbani	10,50,608.00			Mgt of V4 Sub Centre	4,36,762.00	
	Wash Academy	6,25,000.00			WADI Project(NABARD),BBSR	64,40,866.00	
	FADP, ITDA,Balliguda	9,34,500.00			FADP, ITDA,Balliguda	10,10,000.00	
	WADI Project(NABARD),BBSR	41,41,800.00			FADP, ITDA Phulbani	2,70,040.00	
	Solid Liquid Waste Management	9,78,580.00			Promotion of Veg Inter Crop	1,33,277.00	
	FADP, ITDA Phulbani	2,24,667.00			Swachha Bharat Mission	8,30,000.00	
	Mgt of V4 Sub Centre	2,00,000.00			IWMP-IX	30,24,033.00	
	Diversion Based Irrigation, SDTT	53,96,000.00			Community lead Total Sanitation (TMS)	10,22,409.00	
	Community lead Total Sanitation (TMST)	11,83,720.00			WADI,Administration	10,17,888.00	
	Swachha Bharat Mission	7,20,000.00			OTELP-Extension,Tumudibandha	13,83,334.00	
	WADI,Administration	5,93,000.00			Maternity waiting Hall,CDMO	10,58,440.00	
	OTELP-Extension,Tumudibandha	8,05,000.00			PEHECHAN	93,959.00	
	OTELP-Plus,Tikabali	9,00,000.00			AVI/SSEID	15,860.00	
	Maternity waiting Hall,CDMO	11,05,760.00			OTELP PLUS,Tikabali	15,74,141.00	
	PEHECHAN	1,20,577.00			PRI,TROCAIR,Ireland(FC)	4,33,819.00	
	AVI/SSEID	15,860.00			MNCHN(FC)2015	5,18,044.00	
	PRI,TROCAIR,Ireland(FC)	4,12,316.00			MNCHN(FC) 2016	25,00,506.00	
	MNCHN(FC)2015	5,18,044.00			Pathways,CARE odisha(FC)	20,71,088.00	
	MNCHN(FC) 2016	25,00,000.00			MNCHN (FC)-2014	13,514.50	
	Pathways,CARE odisha(FC)	19,70,945.00			Cycle Mounted Solar Pumps	2,25,000.00	
	Diversion Based Irrigation, NABARD/ SDT	5,33,100.00			CLTS	22,830.00	
	Block Resource Centre	1,31,767.00			Wash Academy	6,25,000.00	
	MSDP	3,60,000.00	254,21,244.00		Diversion Based Irrigation, SDTT	13,21,303.00	
To	Other Receipts (Projects) Annex-I				Diversion Based Irrigation, NABARD/ST	4,70,353.00	
	MNCHN(FC)2016	4,992.00			Block Resource Centre	1,53,767.00	
	Pathways,CARE odisha(FC)	5,464.00			MSDP	3,60,000.00	
	IWMP	40,035.00			NULM	2,83,764.00	
	OTELP-Extension,Tumudibandha	2,886.00			Staff Development	11.00	
	OTELP PLUS,Tikabali	4,162.00			Corpus Fund	11.00	
	Promotion of Veg Inter Crop	2,255.00			Rehnuma	29,688.00	295,11,145.50
	Staff Development Fund	16,751.00					
	TI-FSW,Phulbani	12,209.00		By	SWATI General A/C Payments	32,21,876.00	32,21,876.00
	WADI Project(NABARD),BBSR	1,34,518.00					
	WADI,Administration	13,891.00		By	General (FC) A/C Payments	12,612.00	12,612.00
	Corpus Fund	59,731.00	2,96,894.00				
To	SWATI General A/C Receipts		57,68,111.00	By	CLOSING BALANCE (As per Annexure-II)		
To	General (FC) A/C Receipts		74,545.50		Cash-in-Hand	14,570.00	
	Total		423,17,056.86		Balance with Bank	95,56,853.36	95,71,423.36
					Total		423,17,056.86

Place: Paburia

Date: 10.06.2016

[Signature]
Chairman

Chairman
SWATI

[Signature]
Secretary

Secretary
SWATI

[Signature]
Treasurer
SWATI
ANIL PATRO & ASSOCIATES
Chartered Accountants

For Anil Patro & Associates

Chartered Accountants

[Signature]
(P. Anil Kumar Patro)
Partner

Social Welfare Agency & Training Institute (SWATI)

Regd. Office At: Trinath Temple Street, PO: Gosaninuagaon, Dist: Ganjam, Pin:760003, Odisha.
Project Office: At/Po: Paburia, Dist: Kandhamal- 762112 (Odisha)

Income & Expenditure Account for the Year ending 31st, March 2016

Expenses	Amount (Rs)	Amount(Rs)	Income	Amount (Rs)	Amount (Rs)
To Project Expenses (Annexure-I)			By Grants-in-Aid (Annexure-I)		
TI-FSW,Phulbani	11,89,076.00		TI-FSW,Phulbani	11,76,867.00	
MGNREGS	15,152.00		MGNREGS	15,152.00	
Solid Liquid Waste Management	8,48,310.00		Cycle Mounted Solar Pumps	2,25,000.00	
Mgt of V4 Sub Centre	4,36,762.00		Mgt of V4 Sub Centre	4,36,762.00	
WADI Project(NABARD),BBSR	64,40,581.00		WADI Project(NABARD),BBSR	63,06,348.00	
FADP, ITDA,Tikabali	10,10,000.00		FADP, ITDA,phulbani	2,70,041.00	
ITDA,Tikabali	2,70,040.00		FADP, ITDA,Tikabali	10,10,000.00	
Promotion of Vegetable Inter Crop	1,33,277.00		Promotion of Veg Inter Crop	1,31,022.00	
Swachha Bharat Mission	8,30,000.00		Block Resource Centre	1,36,767.00	
IWMP-IX	30,24,033.00		IWMP-IX	29,83,998.00	
Community lead Total Sanitation (TMST)	9,04,037.00		Community lead Total Sanitation	22,830.00	
WADI,Administration	10,17,888.00		WADI,Administration	10,03,997.00	
OTELP-Extension,Tumudibandha	13,83,334.00		OTELP-Extension,Tumudibandha	13,80,448.00	
Maternity waiting Hall,CDMO	10,58,440.00		Maternity waiting Hall,CDMO	10,59,920.00	
PEHECHAN	93,959.00		PEHECHAN	93,959.00	
AVI/SSEID	15,860.00		AVI/SSEID	15,860.00	
OTELP PLUS,Tikabali	15,74,141.00		OTELP PLUS,Tikabali	15,69,979.00	
PRI,TROCAIR,Ireland(FC)	4,33,819.00		Diversion Based Irrigation, SDTT	13,21,303.00	
MNCHN(FC)2015	5,18,044.00		Swachha Bharat Mission	8,30,000.00	
MNCHN(FC) 2016	25,00,506.00		MNCHN(FC) 2014	13,514.50	
Pathways,CARE odisha(FC)	20,71,088.00		MSDP	3,60,000.00	
MNCHN(FC) 2014	13,514.50		Pathways,CARE odisha(FC)	20,65,624.00	
Cycle Mounted Solar Pumps	2,25,000.00		Wash Academy	6,25,000.00	
CLTS	22,830.00		Community lead Total Sanitation (TMST)	10,22,409.00	
Wash Academy	5,62,500.00		Solid Liquid Waste Management	9,67,210.00	
Diversion Based Irrigation, SDTT	12,54,589.00		Diversion Based Irrigation, NABARD/ SDTT	4,70,353.00	
Diversion Based Irrigation, NABARD/SDT	4,70,353.00		NULM	2,83,764.00	
Block Resource Centre	1,53,767.00		Rehnuma	29,688.00	
MSDP	3,60,000.00		MNCHN(FC) 2015	5,18,044.00	
NULM	1,43,764.00		MNCHN(FC) 2016	24,95,514.00	
Staff Development	11.00		PRI Governance & Social Justice	4,33,819.00	292,75,192.50
Corpus Fund	11.00				
Rehnuma	29,688.00	290,04,374.50	Other Income (Projects)		
To SWATI General A/C		19,21,549.00	MNCHN(FC)2013	4,992.00	
To General (FC) A/C Expenses		12,612.00	Pathways,CARE odisha(FC)	5,464.00	
To Depreciation (Annex-III)		3,87,486.33	IWMP	40,028.00	
To Write off- Loan from other project to SWATI General		19,784.00	OTELP-Extension,Tumudibandha	2,886.00	
			OTELP PLUS,Tikabali	4,162.00	
			Promotion of Vegetable Inter Crop	2,255.00	
			Staff Development Fund	16,751.00	
			TI-FSW,Phulbani	12,209.00	
			WADI Project(NABARD),BBSR	1,34,518.00	
			WADI,Administration	13,891.00	
			Corpus Fund	59,731.00	2,96,887.00
To Excess of income over exp.		40,64,298.17	By General A/C Income		57,63,479.00
			By General (FC) Income		74,545.50
Total		354,10,104.00	Total		354,10,104.00

Place: Paburia
Date: 10.06.2016


Chairman
Chairman
SWATI


Secretary

Secretary
SWATI


Treasurer



For Anil Patro & Associates
Chartered Accountants


(P. Anil Kumar Patro)
Partner

Social Welfare Agency & Training Institute (SWATI)

Regd. Office At: Trinath Temple Street, PO: Gosaninuagaon, Dist: Ganjam, Pin: 760003, Odisha.
Project Office: At/Po: Paburia, Dist: Kandhamal- 762112 (Odisha)

Balance Sheet as on 31st, March 2016

Liabilities & Capital	Amount (Rs)	Amount(Rs)	Assets	Amount (Rs)	Amount (Rs)
ORGANIZATION FUND:			As per Annexure- III		
			MOVABLE ASSETS		
Balance as on 01.04.2015	54,47,358.29		Opening Balance	14,83,938.23	
Add Excess Income over Exp.	40,64,298.17	95,11,656.46	Add During the Year	2,66,464.00	
				17,50,402.23	
			Less Depreciation	3,28,861.64	14,21,540.59
CURRENT LIABILITIES,					
PROVISIONS:			IMMOVABLE ASSETS		
			Land		
Un-utilised Grant (As per Annexure-IV)		80,60,276.50	Opening Balance	4,74,508.00	
			Add During the Year	12,878.00	4,87,386.00
Security Deposit for Land Lease		1,000.00			
			Building		
			Opening Balance	13,83,138.20	
			Add During the Year	0.00	
				13,83,138.20	
			Less Depreciation	58,624.69	13,24,513.51
			Security Deposit		26,000.00
			LOAN & ADVANCES		
			On-lending loan with SHGs		73,277.50
			Revolving Fund Advances with SHGs		37,600.00
			Grants Receivable (As per Annexure-IV)		28,76,668.00
			TDS: Opening	15,262.00	
			Add During the Year	2,99,772.00	3,15,034.00
			Advance with Staff (NULM)	1,40,000.00	
			Advance with Staff (WADI- Proj)	285.00	
			Staff Advance	1,41,900.00	2,82,185.00
			Advance for Purchase of Flat		9,00,000.00
			Current Assets (As per Annexure-II)		
			Cash in Hand	14,570.00	
			Balance with Bank(Grants & General)	88,05,816.36	
			Balance with Bank(Staff Dev Fund)	4,53,278.00	
			Balance with Bank(Corpus Fund)	2,97,759.00	95,71,423.36
			Fixed Deposit at Bank (As per Annexure- V)		2,57,305.00
Total		175,72,932.96	Total		175,72,932.96

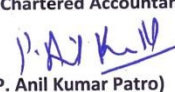
Place: Paburia
Date: 10.06.2016


Chairman
Chairman
SWATI


Secretary
Secretary
SWATI


Treasurer
Treasurer
SWATI



For Anil Patro & Associates
Chartered Accountants

(P. Anil Kumar Patro)
Partner

STATUTORY INFORMATION

Statutory Auditor	:	M/s. Anil Patro & Associates, Bhubaneswar
Internal Auditor	:	Rajesh Kumar Sahoo & Co, Bhubaneswar
Legal Advisor	:	Adv. Ratikanta Mohapatra, Bhubaneswar
Bankers	:	State Bank of India, Paburia/Gutingia/Sarangada/ G.Udaygiri/ Phulbani/Tumudibandha, Berhampur ADB, G.Udaygiri, UGB Phulbani/Belaghar, Andhra Bank, Gosani Nuagaon, Podamari
Public Information Officer	:	Er. Harisankar Rout, Secretary, SWATI
First Appellate Authority	:	Prasanta Satapathy, Chairman, SWATI

GOVERNANCE					HUMAN RESOURCE PROFILE				
Category	Male	Female	TG	Total	Level	Male	Female	TG	Total
GB Member					<5000	18	21		39
General Body Member					<10000	24	15	2	41
					<15000	7	6		13
Full time staff					<20000	5	3		8
Part Time staff					>20000	2			2
					Total	56	45	2	103

SWATI GOVERNING BODY & GENERAL BODY MEMBERS

Name of the Board member	Address	Gender	Position in the Board
Mr Prasant Satapathy	Plot no – 219/1386/2632, Bhubaneswar - 751001, Dist: Khurda, Odisha Mob – 9437242872, E-mail: prasantasatapathy@gmail.com	Male	Chairman
Mrs. Rasmirekha Khatua	At – Narayani Road, PO – Phulbani – 762001, Dist – Kandhamal, Mob – 9438061108, E-mail: bnkhatua@rediffmail.com	Female	Vice-Chairperson
Er. Hari Sankar Rout	At – Pradhan Colony, PO – G.Udayagiri– 762100, Dist – Kondhamal, Odisha Mob – 9437186128, E-mail: swati_pab@yahoo.co.in	Male	Secretary
Mr. Santanu Kumar Mishra	At – Amala pada, PO – Phulbani – 762001, Dist – Kondhamal, Mob – 9437192365, E-mail: paribes_plb96@rediffmail.com	Male	Treasurer
Mrs. Premasi Nayak	District Programme Officer, OLM, Dhenkanal Mob - 9437359381	Female	G.B Member
Mrs. Sujata Mohapatra	K-4, LIG - 744, Kalinga Nagar, Po - Patrapada Bhubaneswar - 751019, Dist: Khurda, Odisha Mob – 9861732858, E-mail- Sujjiosam@gmail.com	Female	G.B Member
Mr. Prasanta Kumar Mishra	At /PO – Tikabali, Dist – Kondhamal Odisha- 762010. Mob - 9437765167	Male	G.B Member
Mrs. Santana Nayak	At – Nuasahi, PO – G.Udayagiri– 762100, Dist – Kondhamal, Odisha, Mob - 9438043680	Female	General Member
Mr. Lal Nanda Pradhan	At /PO – Paderi pada, Tala Dandikia, Via – Bandhagada, Dist – Kondhamal, Odisha, Mob - 9439267104	Male	General Member
Mr Jimuta Prasad Mishra	MIG- 2, 27/1, OSHB Colony, Chandrasekharpur Bhubaneswar, Dist – Khurda, Odisha Mob - 9337103930, E-mail- jimutamishra@gmail.com	Male	General Member
Mr. Prasanta Kumar Nayak	At – Nuasahi, PO – G.Udayagiri– 762100, Dist – Kondhamal, Odisha, Mob – 7750009500, E-mail – tukuonly@gmail.com	Male	General Member



ADMINISTRATIVE OFFICE

**At/Po - Paburia, Dist - Kandhamal,
Odisha, 762112**

REGISTERED OFFICE

**At - Trinath Temple Sahi
Po - Gosaninuagaon, Berhampur
Ganjam - 760003**

PROJECT OFFICE

**At/Po - Paburia, Kandhamal - 762112
At/Po - Amala Pada, Phulbani, Kandhamal - 762001
At/Po - Bandhagada, Kandhamal
At/Po - G.Udaygiri, Kandhamal - 762100
At/Po - Belaghar, Tumudibandha, Kandhamal
At/Po - Tumudibandha, Kandhamal
At/Po - Dengaosta, Ganjam**