

2017 - 18 ANNUAL REPORT

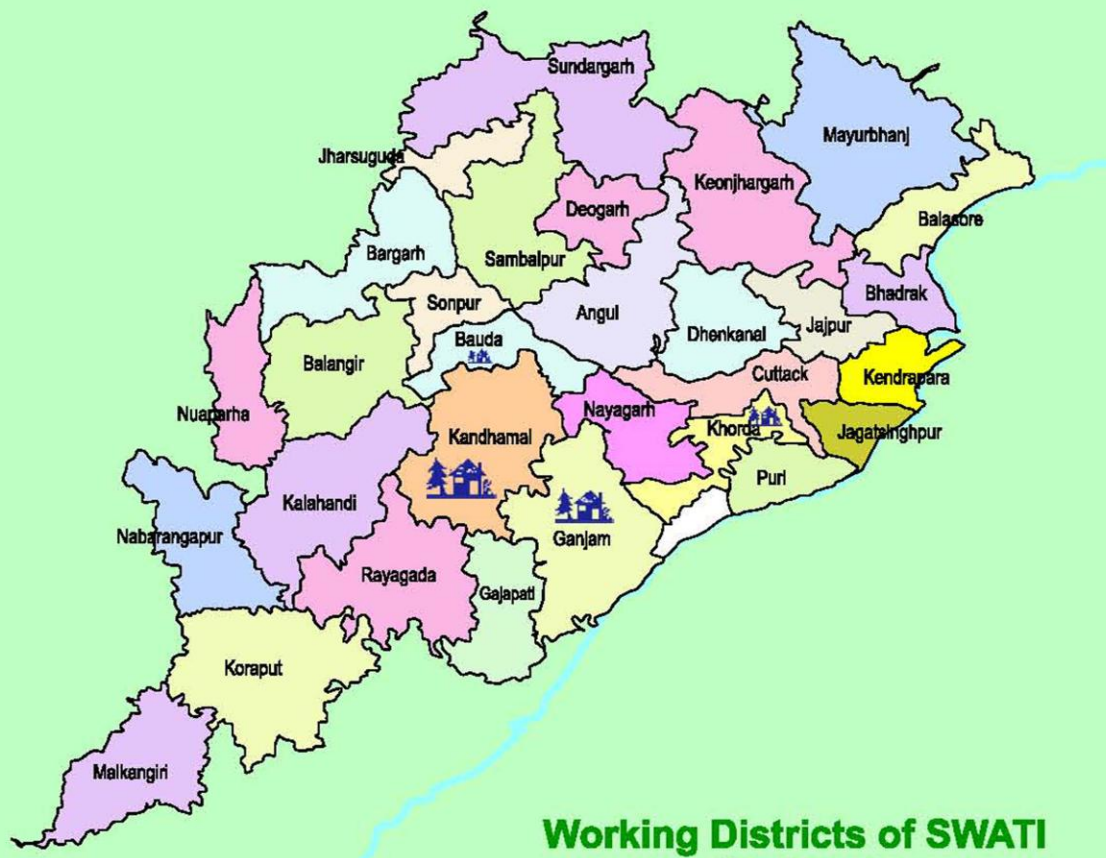


Social Welfare Agency and Training Institute (SWATI)

At/Po : Paburia, Dist : Kandhamal – 762112, Odisha

E-mail : swati_pab@yahoo.co.in, Website : www.swatiodisha.org

WORKING DISTRICTS OF SWATI



Message from the Secretary



It is my pleasure to present the Annual Report of the Organisation for the Year 2017-18 on behalf of the friends and well-wishers of SWATI. This year has been a year of hopes and challenges; not surprisingly in the life of an Organisation working for the poor and the marginalized. We completed 19 years of service to the disadvantaged section of the society. We feel that the coming time will more challengeable for us as a social organisation because the world is going to face most devastating situation of climate change and hunger.

The poorest people already suffering from the highest rates of under nutrition will be the most vulnerable to climate change. Climate change is increasingly and simultaneously eroding their livelihoods assets and access to natural resources and services, while at the same time eroding their capacity to cope with climate-related crises, and adopt sustainable solutions to climate change. The hungry poor, especially women and children, are already the main victims of the changing climate. They live in areas that are prone to weather- and climate- related disasters. Climate change amplifies threats to livelihoods and food security through its direct impacts on food availability, access, quality and utilization. Climate change also negatively affects nutrition through its impacts on health. Now the world is realising that *"If we are to achieve a world without hunger and malnutrition in all its forms by 2030, it is imperative that we accelerate and scale up actions to strengthen the resilience and adaptive capacity of food systems and people's livelihoods in response to climate variability and extremes,"*

In this context the role of developmental organisations at the grass root level is more challenging and important to develop a relevant sustainable development agenda for poor. Capitalizing on its experience SWATI is determined to strengthen NRM and livelihood based engagement with the community on the basis of the learning gained over the years. We are happy that our sincere effort in strengthening the livelihoods through natural resource management has gained appreciation and we have got the opportunity to replicate it in new locations.

Extension of the development projects by our support agencies and expansion of the initiatives to new locations is a proof of our sincere effort and dedication. The challenge for us is to forge convergence and build synergy among sectoral initiatives and strengthen planning, monitoring and evaluation process. Developments at different fronts have made our resolve to work with the poor and the marginalised stronger and helped us renew our commitment to community development.

We place on record our sincere thanks to the stakeholders in our operational area and donors/support agencies – District administration, DRDA, DWSM, CDM, PHO, Kandhamal, PSU OTELP, Ministry of ST & SC Development & Ministry of Urban Development, Govt. of Odisha, DFO Bhanjanagar, Odisha Millet Mission, SDTT Mumbai, OSACS, CARE, TATA Trust, NABARD, OWDM, NIOS, Save the Children for their co-operation. The year ahead beckon us for dedicated action and commitment and with support and guidance we are determined to bring the changes we have envisaged.

With Solidarity

Er. Hari Sankar Rout

Secretary, SWATI

Successful Journey of 19 years – SWATI

Social Welfare Agency and Training Institute (SWATI) has completed its 19 years successful journey in the field of social service to the disadvantage section of the Society and reached in 19 years. Age of a social organization speaks volumes about its experience, achievement and commitment towards social development. Within this time period SWATI has not only proved its dedication towards the cause of people and community but also set many successful examples on sustainable development processes.

SWATI had got registration in the year 1999, the year of Supper Cyclone in Odisha. In that year two continuous tropical cyclones had land fall on Odisha and made massive devastation in the state. It had not only destroyed the life, livelihood, resources, and infrastructures but also affected the socio – political and economic situation of the state. That was a tough time for the social activists those were engaged in community development process in rural areas, because it was a challenging task to revive the people’s self confidence and to protect the self governed community institutions from influence of political, vested interest groups and influential forces. During this time the Government also realized the importance of NGOs in development and be compelled to take their assistance in rehabilitation and reconstruction work. At this juncture time SWATI formed to start development initiatives in disadvantage area of Odisha.

Er. Harisankar Rout, the young degree engineer with ten years experience in social organisation took the leadership and gathered his likeminded friends to form SWATI for a holistic development approach. They set the vision for the integrated development of the villages through the optimum utilization of the natural and human resources of a given rural area for the enrichment of the quality of life of the population. Initially SWATI started its work in a small pocket of Paburia Panchayat of

Kandhamal district with the little support from government and non-government donor.

Now, within these 18 years journey SWATI has established itself as a leading Social Organisation of the state and is working in four districts of Odisha. The Organisation with the expansions of its geographical areas and deepening of its engagement with the partner community has got exposure to knowledge and skill of development professionals and various government and non-government agencies.

About SWATI

Social Welfare Agency & Training Institute (SWATI) a non-government, Not-for-profit organization has been serving for the cause of the poor and marginalized for the last Eighteen years. It is registered under SRA, 1860 bearing registration number I.G.R. 21030/169/1999. It is also registered under the foreign Contribution Regulation Act (FCRA), 1976 bearing registration number 105030007/2002, under the 12AA & 80G of IT Act 1961 and under the Employees Provident Funds and Miscellaneous Provisions Act, 1952 bearing registration number OR/BAM/11047/2012 .

Vision

Healthy and self-reliant community life with dignity ensuring equal opportunity, rights, liberty, justice that enables participation, informed decision-making and creates ability to resolve the issue.

Mission

Capacitating the weaker section, especially the women and the tribal through skill building, leadership development, micro credit, natural resource management and increasing demand generation of entitlements with a special focus on enhancing opportunity for sustainable livelihoods and self-reliance.

SWATI has undergone growth in terms of expansion of geographical area and programmatic intervention during the last 18 years. Its engagement with the community encompasses broad sectoral interventions such as: Natural Resource Management, Livelihood Promotion, Health, Governance, Education and Youth Mobilization for Voluntary Action. The Field operation of the Organization is spread across all 12 blocks (Tikabali, Baliguda, Kotagarh, Daringbadi, K. Nuagoan, Phiringia, Phulbani, Tumudibandha, Khajuripada, G.Udaygiri, Chakapada & Raikia) of Kandhamal District, Bhanjanagar, Sanakhemundi Block and Berhampur city of Ganjam District, Boudh NAC and Capital City Bhubaneswar of Odisha.

Thrust Areas

Development of Livelihood resource base through Natural Resource Management.

Creation of Support and Sustainable livelihoods opportunities emphasizing optimum use of local resources.

Preventive and promotive health services through people's education, creation of community cadres and streamlining of service delivery.

Transparent and Accountable Governance through grassroots mobilization, Rights education, Knowledge and skill building.

Formation and nurturing of Community based organizations and their federations.

Promotion of the Culture of "Unity in Diversity" through Youth Mobilization.

Protection of Women Right, Protection of Girl Child and Child's right, Prevention of Child marriage through Youth, Girl and Women mobilization.

Policies of SWATI

- Human Resource Policy
- Financial Policy

- Gender Policy
- Whistle Blowers Policy

SAWTI AS A DEVELOPMENT CATALYST

SWATI is a platform of strong and vibrant group of development activists, experienced and dedicated workers, professionals and intellectuals. The ratio of women workers are nearly 50%, where as above 70% workers are from the district and working area. SWATI always emphasizes to develop the skills and capacity of the worker through training, workshop and exposures.

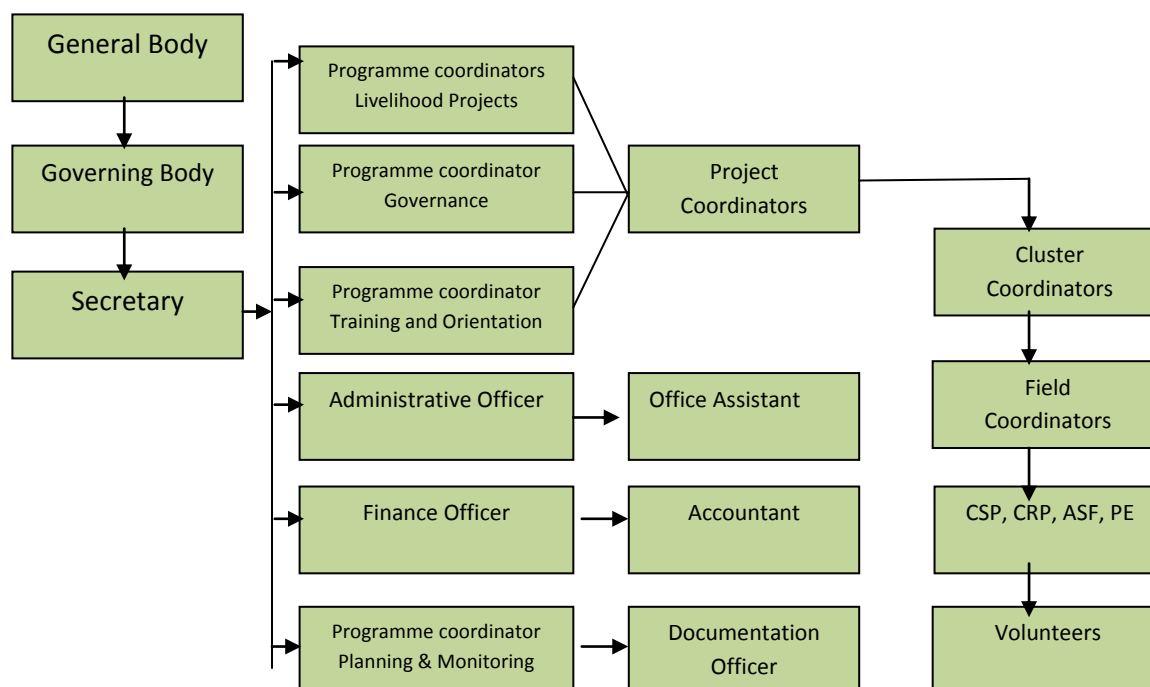
SWATI's field operations are organized under different projects in their respective areas of implementation. It has four broad wings i.e Programme, Administration, Accounts and Planning, Monitoring and Evaluation.

The Secretary is supported by Programme Coordinators, Finance Officer and Administrative Officer. Programme Coordinators are supported by Field Coordinators and Cluster Coordinators. Governing Body of the Organisation has Development Professionals and Activists with representation from different social groups. Meeting of the Governing Body is held twice in a year. Governing Body takes Policy decision and deliberates on strategy Issues.

Legal Identity of SWATI

- **Registration number I.G.R. 21030/169/1999.**
- **FCRA-1976 registration number 105030007/2002**
- **Registered under the 12AA & 80G of IT Act 1961**
- **Registered under the EPF and Miscellaneous Provisions Act-1952 bearing registration number OR/BAM/11047/2012**

Organisational Structure



Major Programmes of SWATI

SWATI is implementing many programmes for the integrated development of the rural and poor community. All these programmes can divide in to four categories –

Livelihood and Natural Resource Management –

Odisha Tribal Empowerment and Livelihood Programme (OTELP), Odisha Forestry Sector Development Programme (OFSDP), Focussed Area Development Programme (FADP), Deen Dayal Antyodaya Yojana – National Urban Livelihood Mission (DAY – NULM), NABARD WADI, Millet Mission, Diversion based Irrigation (DBI)

Health and Sanitation

Marriage No Child's Play (MNCP), Targeted Intervention (TI), Maa Gruha, Bike Ambulance

Women Empowerment and Education

National Institute for Open Schooling (NIOS), Marriage No Child's Play (MNCP)

Panchayatiraj and Good Governance

Social Audit, Deen Dayal Antyodaya Yojana – National Urban Livelihood Mission (DAY – NULM), Ananya (MNCP)

LIVELIHOOD and NATURAL RESOURCE MANAGEMENT



The Rural Livelihoods are based on holistic management of Natural resources and SWATI has been taken it as an important domain of its intervention. The sustainable and efficient management of natural resources is now imperative for the achievement of at least 12 out of the 17 United Nations Sustainable Development Goals (SDGs). A number of Sustainable Development Goals (SDGs) are addressed through this inclusive and integrated approach of livelihood augmentation, like ending poverty and hunger, ensuring food security and nutrition, promoting sustainable

agriculture, ensuring healthy lives and combating climate change impacts. Natural and locally available resources are properly utilized to increase both availability and options of livelihood throughout the year while conserving these natural resources through enhancement of their quality and quantity. SWATI as a developmental organization has been engaging itself in the local solution of this Global concept. SWATI's Intervention in Natural Resource Management showcases its approach of placing people and their priorities firmly at the centre of its engagement with the partner community. SWATI's intervention in NRM has scripted broadening and deepening of its trust with community development.

Development Activities based on a systematic analysis of poverty and its causes taking into account informed view of opportunities and priorities of the people are the building blocks of SWATI's Livelihoods Programme. Livelihoods Intervention of the organisation encompasses promotion of optimal use of local resources, raising production and productivities of the existing livelihoods portfolios, skill building and handholding support for diversification and encouraging entrepreneurship among the marginalized sections of the community.

Odisha Tribal Empowerment and Livelihood Programme (OTELP)

The Project

SWATI has been implementing OTELP Extension project in Tumudibandha Block in association with the ST & SC Development Department, Govt. of Odisha since 2013. The Main objective of the project is to ensure household food security and improve livelihood opportunities and overall quality of life of the tribal population based on sustainable and equitable use of natural resources. This initiative is anchored on convergence with government schemes and programs. Capacity



building for empowerment, Livelihood enhancement, Support for policy initiatives i.e.; provision of support for operationalisation of government's existing policy initiative in relation to tribal's access to land and forest products and Development Initiative Fund i.e.; provision for additional fund for well performing activities and activities demanded by the community are the four broad components of the initiative.

SWATI is facilitating this programme in 46 villages of 6 panchayats in Tumudibandha Block of Kandhamal District covering 4999.00 hectares of treatable area and 1450 households.

Through this project IFAD Top Up assistance Support has been utilized for promotion of income generation activities in different livelihood portfolios such as; Bamboo Craft, Blacksmith, Carpentry, Goat rearing and Poultry. Special attention has been paid to livelihood promotion of persons with Disability.

Livelihood promotions through agriculture and horticulture programs have been taken in convergence with line departments.

Capacity building and skill up gradation of villagers, Promotion and strengthening of SHGs, Formation and strengthening of Farmers groups and Cooperatives, Vocational Training for Employment Generation.

Micro Hydro project for Energy sustainability of Rural Villages has been undertaken in the operational area.

Though this project is in withdrawal stage SWATI is engaged in withdrawal and transfer process to handover the organisational funds, responsibilities and management of infrastructures created through this project.

Impact

The village level organizations and development committees have been empowered and the level of awareness on government schemes and programs has increased. People's participation and especially

women participation has increased in development processes and panchayat meetings. Government fund flow for different programs to this area has increased through different convergence processes.



The Agricultural developmental program has increased in crop production and vegetable production in villages. Development of Irrigation infrastructures have given crop protection and encouraged for multi season cropping among farmers. Many fallow lands have been put under cultivation through land development. Vegetable, Cash crops, Pulses and Millet production have increased. More employment opportunity has been created and annual income of the households has increased. The health and nutritional standard of families have also developed due to consumption of fresh vegetable.

The livelihood security support to poor, ultra poor and physically challenged persons has strengthened their living status and given social security.

The unemployed youths have got income and employment through support of Economic activities and Agricultural development.

The SHG management and orientation activities have improved banking knowledge, marketing knowledge, linkage with government offices and empowered the women groups by giving economic security.

The quality of life of the villagers has changed due to safe drinking water facility, village electrification, health and sanitation facilities, supply of modern technological instruments like cook stoves, water filter and solar system etc.

Major Activities During 2013 to 2018

Sl.No	Activities	No's	Village	Status of Activities
1	low cost Housing	35	28	Functioning
2	Bamboo craft	58	6	Running
3	Rural Artisan (carpentry)	8	8	Running
4	Support for Physically Challenged	13	12	Functioning
5	Economic unit for unemployed youth	5	5	Running
6	Improved Goat rearing	40	2	Running
7	Rural Artisans (Blacksmith)	4	2	Running
8	Trellis under TOP-UP assistance	271	13	Damaged
9	Pump set under TOP-UP-Assistant	86	12	Functioning
10	Diversion based irrigation	10	8	9 Functioning
11	Gravity based Drinking Water	10	10	8 Functioning
12	Dug- Well	8	8	Functioning
13	Sanitary Well	2	2	Functioning
14	Sanitary Solar based drinking water	4	4	Functioning
15	Grocery shop	8	8	Functioning
16	Smoke less Chula	206	12	Functioning
17	Filter	256	10	Functioning
18	Individual household Latrine	291	9	60% Functioning
19	Goat support under SC to TSP	310	4	Running
20	Tractor though SHG	1	1	Not Functioning
21	Pico-hydro project	3	3	2 completed
22	Mango Plantation through MGNREGS	148 Hc.	12	80% Plant Survival



Odisha Tribal Empowerment & Livelihood Program (OTELP Plus)

The Project

Odisha Tribal Empowerment & Livelihood Program (OTELP Plus) is being implemented by SWATI since 2013 covering 32 villages in 6 GPs that come under 10 watersheds in Tikabali Block. It is an extended project of State government's OTELP project to new areas, mainly operational through convergence funding of different line departments. The goal of the Project is to enable the poor households to sustainably ensure their livelihoods and food security through promoting a more efficient, equitable, self-managed, optimum use of the natural resources, off- farm/non- farm enterprise development and accessing the rights and entitlements entrenched in it. The objectives of the Project are; to Built the capacity of the marginal groups, to ensure the access of the poor tribal people to natural resources and increase its productivity, to encourage and facilitate off-farm enterprises and to ensure basic entitlements of tribal households.



The major activities of this programme are: Preparing Village development plans, facilitating the VDCs to implement different developmental activities in village level in convergence with government departments, Mobilizing the Community for accessing rights and entitlements, Building the capacity of SHGs, Farmers groups, Village Development Committees and other grassroots institutions, Facilitating off-farm enterprise for income and employment generation,



Developing the skill and leadership of Community Service provider and Monitoring the basic food entitlements of tribal households and ensuring their access to public food supplies

Achievements of this year

Land Development

SWATI has successfully mobilized MGNREGS funds for Development of Agricultural lands, Land and water management works in villages. During this year SWATI has facilitated to implement MGNREGS fund for land development in village Barasahi, Malerimaha, Sinduraguda and Danderi of Paburia GP, Tilbangi of Gardingia GP and Burbina of Burbina GP. This initiative has created 11571 Person days of employment and developed 900 acres of agricultural lands utilising Rupees 22,87,922 of MGNREGA fund in these 6 villages of 3 Panchayats.

Plantation and Fruit bearing Orchard Development

During this Year SWATI has mobilized Rupees 19, 55, 538 MGNREGS fund and developed 45 acres of Plantation and Fruit bearing Orchards in Pipalasahi, Bariguda, Dupepada, Sapaganda, Danderi and Kutiguda village. This process has created 11, 141 person days of employment in these villages. Similarly SWATI has mobilised Rupees 14, 09, 248 MGNREGA fund for second year maintenance of 73 Acres mango plantation in Birangi, Kalungia,

Singasuru, Gudripadi, kambaguda, jaka, Damiguda, Darapida and Kadrukupada village and created 4600 person days of employment through this.

Agriculture and Irrigation

SWATI has facilitated for 17 Dug wells and 15 Ring wells to farmers for irrigation.

140 farmers are supported for vermin compost preparation

Agriculture Department has provided goods and services like seeds and implements to the farmers. Improved variety of Maize, groundnut and Moong seeds, Implements like Weeder, thresher and hand winnower support have been secured from the department. Concern Departments have also provided support for trainings on agriculture, Krushak Mela and Animal health camps. Support for shed net, Farm pond, Floriculture, vegetable and onion seedlings, Banana plants and HDPY Vermin bed have been mobilized from horticulture department.

ITDA has provided support for Mango and Hill broom plantation, Onion and Mustard Cultivation for agricultural development, Construction of DBI, KB pumps and Honda Pumps for irrigation, Bore well and Sanitary well, Drying Yard and Broiler Unit in the project area.

Development of Community based Organisations



31 Village Development Committees are strengthened and village development plans are prepared. 26 new SHGs are formed and total numbers of Women SHGs have reached 170. SWATI has given trainings and orientations to strengthen the capacity of SHG members and supported them for bank linkage, thrift and credit, accounts keeping and IGP activities. Now four SHGs are doing poultry farming and 6 SHGs are doing grocery shop and other pretty business. SWATI has also formed 10 SHG federations and oriented them on leadership,



federation management, accounts keeping and women's rights. Now the federation members are leading anti-liquor campaign, child marriage prevention and violence against women in the area. They are also guiding women and child health programmes and child education programme in respective villages.

Impacts

The Agriculture development programme has increased the vegetable and crop production and given more income and employment to the farmers. It has also developed the food security and nutrition security in villages.

The Capacity building activities of SWATI have improved the confidence level of the village leaders and members of CBOs to access and implement the government programmes. The SHG activity has empowered the women both economically and socially and increased their participation in village and panchayat level meetings and plans.

The Village sanitation has improved due to proper implementation of SWACHHA BHARAT ABHIYAN and almost all the families have constructed toilets for own use. Eight villages are declared as Open Defecation Free Village.

Convergence among the departments has provided the anchorage to implementation of the programme and Many Developmental issues are resolved through convergence. The villagers are supported with dry yards, Compost pits, solar based drinking water facilities, toilets, godown/packing house etc.

Focused Area Development Program (FADP)



The Project

The initiative is anchored on convergence with ITDA to plan & support livelihood enhancement projects by converging with various National & State programmes and external donors. The main objective of this programme is Economic development of ST families through implementation of various livelihood enhancement projects with “Individual family/Group of families” as the target group. SWATI is implementing Focused Area Development Program (FADP) in 889 villages of 48 Gram panchayats in 3 Blocks of Phulbani ITDA Area covering 2017.61 square kilometre and 1,74,846 population, out of which the tribal population is 96,610. Similarly in 9 Blocks of Baliguda ITDA Area covering 6511.54 square kilometer and 4,50,277 population, out of which the tribal population is 2,45,210.

Focused Area Development Program (FADP) has four major activities such as; Improved Agriculture, Horticulture, Animal Husbandry and Skill development of Tribal Youth. SWATI; being a partner NGO working in association with ITDA, facilitating community mobilisation, programme arrangement, survey, identification & selection of beneficiaries for different activities, PRA, planning, participate in implementation process, post follow-up of implemented activities, handholding support to beneficiaries etc. SWATI has been also facilitating in formation & promotion of CBOs with special emphasis on WSHGs along-with their

involvement in various locally feasible income generating activities for socio-economic empowerment. The Organisation has been organising Awareness building on different govt. Schemes/ programmes, supply of safe drinking water to all families, literacy promotion, community health development, Natural Resource Management, employment/ self-employment generation for unemployed masses, capacity building of different groups on their working area concern, lobby & advocacy for food security & social security are the activities under taken by this institution along-with ITDA’s planned activities.

Achievement of the Year

Orchard based Livelihood

During this reporting year 40.5 acres of horticulture plantation being done in 18 villages of Phulbani ITDA area. The beneficiaries are supplied Hi-yield Variety Mango, Guava, Papaya, Lemon seedlings along with Turmeric, Ginger, Broccoli, Carrot, Potato seeds on free of cost and encouraged them to develop 0.25 model remunerative backyard gardening. Wire mesh facility has also provided to the beneficiaries to fence the planted areas. Similarly 274 farmers are supported for raising 300 acres mango plantation in their lands in Baliguda ITDA area. 153 farmers are supported for maintenance, gap filling and land water management in their previous year plantation area.



The plantation farmers are also supported for inter cropping and vegetable cultivation in their respective plantation area.



Agricultural Development

In Phulbani ITDA area Agricultural developmental activities has undertaken in 195 acres land including 430 beneficiaries of 50 villages and HYV seeds like maize, paddy, Arhar, Mustard, Nizer, Tila along-with fertilisers provided to the identified progressive farmers in convergence with line departments. SWATI has also organised trainings, meetings, workshops, demonstration camps using experts, L/H and subject matter specialists from line departments as resource person to improve the skill and knowledge of the farmers.

The farmers are encouraged for improved agricultural practice and trained on HYV seeds/seedlings, line sowing, SRI cultivation, cropping seasonality, fertilisation, introduce of improved implements, seed purgation, techniques of ground water recharge etc.

In Baliguda ITDA area 200 farmers are supported for potato cultivation in 50 acres land, 100 farmers are supported for HYV maize, mustard, sweet potato and sunflower and 140 farmers are supported for Papeya and drumstick cultivation in 35 acres land.

Non-Farm Livelihood

Many poor and landless families are supported through this project to strengthen their livelihood

from different non-farm activities like poultry, pisciculture, bee keeping and different income generation activities.

In Phulbani ITDA area 428 women of 37 SHGs are supported for poultry farming and 4280 Banaraj variety of chicks have supplied to them. Similarly 153 families of 7 villages are supported for pisciculture in Pilasalunki Dam and another 60 families are supported for Bee farming.

In Baliguda ITDA area 40 families have got support for Bee farming and 182 women have got leaf plate making training through this project.

Through skill development and placement initiative for unemployed tribal youth, 285 trained youth have got placement in different companies and departments. 90 tribal youth have got skill development training and 162 tribal girls are provided ANM training through this project.

Impact

The agriculture developmental activities have increased agricultural and Horticultural production, given employment and income opportunity for farmers and also provided food and nutrition security to the families.

The Plantation activities has provided a sustainable income source to the families, increased the fruit production in the area, encouraged the farmers for farm based cultivation and market based production and also created a green belt in villages.

The farmers have revived crop diversity through mixed agriculture and integrated farming practice in their fields.

The Women self-help groups have increased their income through different income generation activities and it has empowered them economically and socially.

The nonfarm livelihood opportunities have strengthened the income of landless and poor families. The placement linked employability training course has given employment opportunity to the unemployed youth of the area.

NABARD WADI



The Project

SWATI has been implementing Orchard based Livelihood Programme WADI with the support of NABARD in Kutia Kandha villages of Belaghar, Bilamal and Gumma panchayats since 2014-15. The main objective of this programme is to give Livelihood and Income security of Poor tribal families from fruit bearing Orchard WADI. With this objective the programme also aimed to improve the standard of living of the families, developing unutilized and sloping lands into productive asset, integrating trees and other perennials into the farming system, Emphasis on sustainable farming practice, combining livelihood activities having different gestation period and improving the food

and nutrition security through intercropping.

This WADI model is a holistic approach addressing the food security, income security, land water management and increase in production. This programme also includes other components like Water Resource management, Soil and water conservation, Drudgery reduction of women , Sustainable Agricultural Practice, Improved Agriculture, Cooperative Marketing and Integration of Landless.

Under this programme SWATI has promoted 725.5 Acres of fruit orchard of 789 farmers covering 42 villages of 3 Grampanchayats. The tribal families having land holding less than five acres are selected as beneficiary and each family are given support for maximum one acre WADI development. SWATI has given support for land development, pit digging, Fruit and border plant saplings, fertilizer and pesticide and field management. SWATI has been also given training to the farmers on pest management, water management, mulching, Compost and bio fertilizer preparation, intercropping etc. The Organisation has provided irrigation facility to WADI fields and supported seeds and agricultural implements for intercropping. SWATI has arranged Wire mesh fencing support in convergence with different Govt

Total Target in 3 Years (800 Acres)

Year	Area in Acres	No of Beneficiaries	Village Covered	No of GP	No of UVS	Plant Status (Per Acre)			Total Plant (1 acre)
						Mango		Cashew Nut	
						Amrapalli	Duseri		
1st yr	150	150	9	3	9	30	15	17	62
2nd yr	301	355	15	3	17	30	15	17	62
3rd yr	274.5	284	18	3	18	30	32	0	62
Total	725.5	789	42	3	44				

departments. 44 Udyana Vikash Samitis are formed in WADI villages to strengthen inter relationship among the farmers. SWATI has formed a Farmers Producers Company named Surgabhata Producers Company covering 400 WADI farmers for collective marketing of WADI products.



Achievement of the year

- SWATI has complemented 725.5 acres WADI plantation out of 800 acres target and supported the farmers for mulching, staking, watering, gap filling and other maintenance activities.
- 655 Acres Boundary line Repairing and change of staking pole by farmers have completed. SDTT Mumbai has supported Wire Fencing of the WADI fields for protection of the plants from stray animals. The Support has helped in higher rate of morality of the plants. Needless to mention; wire fencing has helped in growing of intercrops.
- The farmers are supported for Vegetable intercropping in WADI patches and they are producing Cabbage, Cauliflower, Tomato, Brinjal & Green Chili and Oil seeds like Sunflower, Mustard and Til etc. Ten farmers are supported for vermin compost preparation.
- The farmers are facilitated to get support from different departments like KKDA, ATMA, FADP & NHM programme through convergence for agriculture and horticulture development.
- Farmers are supported for Minor Millet cultivation like, Maize, finger millet, Fox tail Millet, Little millet and Pearl millet and Tissue

Culture Banana plantation in their WADI fields. 4 Shed nets has installed in 4 WADI villages for nursery raising.

- Total Ten Diversions based irrigation projects have established for irrigation facility in Wadi fields, 36 Diesel Pumps, 9 dug wells has also provided to UVS for irrigation.
- The women SHGs are given capacity building trainings on group dynamic, leadership, Bank linkage, thrift and credit and different income generation activities. Two women groups has started Group Poultry farm and 16 landless families are supported for home based poultry farming.
- To reduce drudgery of women cook stoves, water filters & solar lights has supported to 174 households by NABARD/OTELP.

Surgabhata Farmers Producer Company Ltd

SWATI has promoted a Farmers Producer Company (FPO) of WADI farmers to create an enabling policy environment for investment in Farmers Producer Organisations and to leverage their Collective Marketing Power. The FPO is registered in Company act and also opened a bank passbook at Belghar UGB. Till now 480 members of 35 villages are enlisted in it and an executive body is also formed. 480 Share Holders are enrolled in FPO and Rs 96, 000/- share capital has collected.

This year the FPO has marketed 17 quintals pulses, 12 Quintals oil seeds, 32 Quintals of millets and 3 quintals of Mango. It has also established one Rice processing and one Millet processing unit at



Belaghar and a pack house with the support of ITDA.

Impact of the Project

This initiative has given a sustainable livelihood opportunity to the poor tribal families those were mostly dependant on shifting cultivation for their livelihood. Now these families have engaged in intercropping and vegetable production and increased their earning and food security.

The intercropping Practice has revived the mix cropping practice and crop diversity in farmer's field. Cultivation of Millet crops, root varieties, oil seeds and leaf vegetables in the WADI field have given equal taste and variety of Crops from sifting cultivation. It has also motivated the farmers for improved and seasonal vegetable cultivation and has given comfortable earning according to market demand.

The Farmers are organized and farmers to Farmers interaction and knowledge exchange processes



have revived. The women farmers are organized in groups and accessed banking facility for income generation activities. Formation of Farmers Producers Company has given strength and marketing confidence among the farmers.

Now other departments like horticulture, KKDA and forest department are also following the success of WADI and promoting more plantation fields in the area.

Deendayal Antyodaya Yojana-National Urban Livelihood Mission (DAY-NULM).



Ministry of Housing & Urban Poverty Alleviation, Government of India is implementing the Programme Social Mobilisation and Institution Development (SM & ID) for the urban poor through Deendayal Antyodaya Yojana-National Urban Livelihood Mission (DAY-NULM). This Programme is aimed at mobilisation of urban poor households to form their own institutions is an important

investment for an effective and sustainable poverty reduction programme.

The Main objective of this project is to reduce poverty and vulnerability of the urban poor households by enabling them to access gainful self-employment and skilled wage employment opportunities, resulting in an appreciable improvement in their livelihoods on a sustainable basis, through building strong grassroots level institutions of the poor. It envisages mobilisation of urban poor households into a three tiered structure with Self-Help Groups (SHGs) at the grass-root level, Area Level Federations (ALFs) at the slum / ward level and City-level Federations (CLFs) at the city-level. The urban poor family members are organised to form the groups, trained and oriented for SHG management, Savings, financial inclusion, IGP planning, Skill development, Group and personal income generation programmes.



SWATI has been implementing National Urban Livelihood Mission with State Urban Development Agency in 16 wards consisting of 112 slums and 47622 HHs of Bhubaneswar Municipal Corporation, 10 wards of Berhampur Municipal Corporation, 17 wards of Boudh NAC and 13 wards of Phulbani NAC with a Tri-Party Agreement (State Urban Development Agency, Bhubaneswar Municipal Corporation and SWATI) since 2016.

Achievements of this Year

SWATI has promoted SHGs to strengthen the livelihoods of urban poor through thrift and credit. It has promoted new SHGs, reformed the old SHGs, and oriented them on Book keeping, thrift and Credit, Bank linkage, IGP planning and income generation activities. Organization has provided revolving funds to the SHGs for IGP activities and formed Ward level and Cluster Level Federations of SHGs .

Progress of SHG Activities

SL no	Activities	Bhubaneswar	Brahmapur	Phulbani	Bouda
1	Formation of WSHGs	577	149	89	125
2	Account Open and Bank linkage	577	147	86	112
3	Capacity Building Training	505	127	114	121
4	Revolving Fund	217	127	66	121
5	Ward level Federation	30	8	7	10
6	Cluster level Federation	30	0	0	10
7	Group Loan	8	13	30	5

Total 114 SHGs of 55 ALFs have started different Income generation activities like Grocery shop, Phynaile making, Tailoring, Snacks making, Mudhi Mixture, Dry food business, Saree, Readymade garment, Agarabati making, Spices and Masala Business, ladies corner, boutique, Napkin Business, Badi, pampad and pickles, decorative plastic flowers and road side vending.

SWATI has organized the SHGs to take part in sanitation, mother and child care, Police public interface and other welfare activities in colony. The SHGs are also observing national and international days like Independence Day, Republic Day, Women Day, Labour Day.

SWATI has organized conventions of Women SHGs and discussed issues related to health, education, sanitation, drinking water, power supply, women right and women atrocity.

The women groups are organized to take participation in ward level sanitation, anti liquor campaign, maintaining peace in slums and resolving family disputes. The Women federations of Bhubaneswar Municipal Corporation have started campaign against liquor in the city.

The groups are organized to place the issues of their own slums in different government offices, corporaters and NAC offices.

Impact

This Programme has created a great impact in Socio economic and political life of poor households in the city. Though the programme is mainly concentrated on women it has empowered them financially and socially. They are getting more courage and confidence from group activities and capable to choose different livelihood options.

This Programme has enabled the poor women to form groups, create group funds, internal money lending, accounts keeping, IGP planning and cooperative business. It has educated them on financial inclusion process, Banking system, Loan process of financial institutions, small business and enterprise development, Market study and marketing of home made products.

The orientation process of the programme has enabled the SHG members to build relationship

NULM Activities

with Banks, Government Offices, Business organizations, administrators and people's representatives.

Above 90% of group members have opened their personal saving account and enrolled in different financial policies and insurance policies.

The Process of building federation of women SHGs has created a platform to share their issues and enhanced their decision taking ability. The federations are also growing as a pressure group to access the government provisions.

This economic empowerment process has strengthened the decision making ability of women in the family, position of the women in family and community and their access and control of rights and provisions.



Poor Urban Women started to transform their lives through SHG



The poor women of Laxminarayan slum under ward number 29, Unit-9 area of Bhubaneswar Municipal Corporation have now got an opportunity to increase their skill and income through Self help group and started a small group business to increase their income. All these women are belongs to very poor families; those depend on daily labour, road side vending, housekeeping, Auto driving and other labour works for their livelihood. They lives with lots difficulties in their small huts and low income and unable to provide good food, education and health to their family members. The women members of the families can't get any income

opportunity due to lack of education, skill and household burden.

The NGO SWATI started intervene in this area in 2015 and organized the women for better livelihood under National Urban Livelihood Mission. The Organisation motivated the women to form Self Help Groups and explained them the utility of SHG for improvement of economic standard and livelihood. Ten women of Laxminarayan Slum get together and formed a SHG named SAI SAKTI. At first they formed the group, selected their office bearer, collected members' fee and opened a saving account in the name of group by taking advice from SWATI workers. Though they had not any idea about SHG management SWATI workers gave them hand holding support on formation and management of SHG and trained them on book keeping, regular saving, internal lending and accounting process.

Within two years they increased their saving up to thirty thousand and started a small group business. Observing their progress and activeness SWATI also arranged 10 thousand rupees as revolving fund and facilitated them in IGP planning. They started Saree business and spice business in their limited investment. They purchased spice raw materials from market, processed it and made packets with own sticker and price tag. At first they supplied to known families of the colony and contacted 2/3 shops to display and sell their products. They also contacted nearby small hotel and restaurants to purchase their product.

Now within three month they are able to spread their business in their locality. Their monthly business turnover has already reached 40 thousand and there is big demand of their products. Sagarika Ray, the young secretary of the group said that now their customers are requiring more quantity of products from them. Though they are providing quality products with marginal profit it has a big demand among the buyers. But due to lack of space for processing and storage they could not able to produce more quantity according to market demand. They have decided to open an outlet of their products in the road side and to attain the exhibitions, festivals and weekly markets to advertise their products and to spread their business. According to Premalata Sahoo, the president of the SHG, this business opportunity has given them a hope of improvement in income and living standard.

Millet Mission

The Project



Government of Odisha is implementing Millet mission to revive and multiply millet base crops and to strengthen the food security and nutrition security of tribal and highland area people.

The main objective of this programme is to Increase household consumption of millets by about 25% to enhance household nutrition security, to promote millet processing enterprises at Gram Panchayats and Block Level, to Improve productivity of millets crops and make them profitability and to develop millets enterprises and establishing market linkages to urban/rural markets with focus on women entrepreneurs.

SWATI is implementing this programme in Raikia block of Kandhamal district.

Achievement of this Year

140 farmers of 16 villages in Indragada, Badabaraba, Jarada and Petapanga Panchayat are supported for Rainy season finger millet cultivation in their 156 acres land. Similarly 38 farmers of 4 villages are supported for winter season millet cultivation.

SWATI has organized agricultural camps, orientation and training camps to motivate the farmers on revival of millet farming.



The farmers are provided high yielding seeds with other agricultural inputs and oriented for systematic Millet Intensification (SMI) techniques, Bio fertilizer preparation and improved farming process.

All the Millet farmers have produced three times more crops in SMI farming system related to their traditional farming practice and more farmers are interested to cultivate this crop in coming season.

SWATI has organized community level food festivals on different millet based foods and created sensitization on its nutrition value among the villagers.

Impact

This process has encouraged the farmers to revive the millet based crops on their field and many farmers are interested to cultivate it in coming season.

The SMI method of millet cultivation has attracted the farmers and they have realized the increased quality and quantity of the crops through this method and also calculated the margin of benefits.

The revival of millet crops has brought returns the nutrition varieties in their food recipes and created encouragement among the women.

This process has also revived the traditional mixed cropping practice among the farmers. They have cultivated it with other traditional crops and got crop protection through this practice.



Diversion Based Irrigation (DBI)



The Project

Diversion Based Irrigation has the objective to meet the water needs of the people through utilization of available resources adopting structural measures and community participation. It is a low cost technique to supply water from distant stream to remote villages through pipe for irrigation and drinking water. This technique needs no electricity or fuel to supply water and is easily managed by the community. The major activities of this programme are community mobilization for labour participation, infrastructure creation, command area development and agricultural support.

SWATI had established 15 DBI structures in Phiringia, K.Nuagaon and Tumudibandha Block in the 1st phase and in 2nd phase with the support from SDTT and NABARD. In the year 2017-18 it has established another 10 structures in K Nuagaon Block and Tumudibandha block.

Achievements of this Year

Total 437 Households of 10 villages' in Tumudibandha and K.Nuagaon Block are getting 24 hour water supply for drinking purpose and total 257 acres Kharif crop and 124 acres land getting irrigation facility for rabi crop.

Farmers have cultivated 42 acres Patato in 16 villages, 50 acres vegetable in 17 villages, 65 acres kharif paddy in 10 villages and 5 acres sunflower in 5 villages.

SWATI has developed a ½ acre model of mixed cropping plots in all DBI villages with Banana, vegetables, creepers, leaf vegetables and root crops. So the organization has provided 3600 tissue culture banana plants, vegetable seeds, wire mesh for fencing and other agricultural inputs to the farmers. A small family could get green vegetable and also income from the plot throughout the year and will get nutrition and food security.

SWATI has provided 5000 Hybrid vegetable Seedlings in 5 DBI Villages of Tumudibandha Block with the support of Surgabhata Producer Company Ltd. The organization has facilitated for Banana farm in DBI villages in convergence with Horticulture Department. The Organization has provided 8000 Stumps of Pointed gourd to the farmers in 10nos of DBI Sites of Tumudibandha and K.Nuagaon Block.

The Farmers of Pakur, Kuabadi, Bandakinala and Udayagiri have marketed 142 quintals of Banana and 5 quintals of Pointed Guard.

Impacts of this project

DBI irrigation facility has encouraged the farmers to cultivate vegetables and other food crops throughout the year. The Crop diversity of these villages is revived and villagers are adopting more vegetable, pulse and millet crops. The household food and nutrition security has shown significant improvement witnessed in diversification of the food basket and dietary intake of nutritious food





especially by women and children. Line sowing and SRI method of paddy cultivation has been promoted in these villages. This facility has protected crops from drought and more fallow lands have been put under cultivation.

Availability of water has improved the health and sanitation of the families. The DBI water supply has encouraged the villagers to adopt community led sanitation and Swachha Bharat Axiyan by constructing and using latrine. It has a great impact as the villagers are getting water for their daily



need and agriculture without any price and expenditure on electricity or fuel. The drudgery of collecting drinking water has been reduced for women. Now, women do not have to go far-off places to collect water which saves their energy and time.

The increased availability of water for cooking, washing and bathing has improved the quality of their life. Now they are liberated from the back breaking workload and find more time for themselves and for taking care of their children.

SL No	Block	GP	Village	No of HH	Project Status	Years	Support
1	Tumudibandha	Guma	Tidipadar	22	Completed	Year II	SDTT
2	Tumudibandha	Jhiripani	Surangbaru	32	Completed	Year II	SDTT
3	Tumudibandha	Jhiripani	Jhilpani	34	Completed	Year II	SDTT
4	Tumudibandha	Bhandarangi	Bhandarangi	90	Completed	Year II	SDTT
5	K.Nugan	kudutuli	Damerikia	45	Completed	Year II	SDTT
6	K.Nugan	kudutuli	Srirampalli	60	Completed	Year II	SDTT
7	K.Nugan	kudutuli	Jannagayel	12	Completed	Year II	SDTT
8	K.Nugan	Gunjibadi	Padelikia	65	Completed	Year II	SDTT
9	K.Nugan	Ganderigaon	Gosaguda	65	Completed	Year II	SDTT
10	K.Nugan	Kuduteli	Solapadar	12	Completed	Year II	SDTT

Odisha Forest Sector Development Project (Ama Jangala Yojana - OFSDP – Phase II)



The Project

Ama Jangala Yojana is a flagship programme of Government of Odisha being implementing by Odisha Forest Sector Development Society (OFSDS)in Joint Forest Management mode covering 700 VSS and Eco development Committees spread over 30 forest and wildlife divisions.

The AJY scheme aims to achieve sustainable forest management in the project area through forest restoration initiatives along with providing income generating and livelihood opportunities to the forest dependent communities, so that the pressure on adjoining forest is relieved/reduced. The main objectives of AJY Scheme are – To conserve and restore degraded forests through forest restoration initiatives, To arrest further degradation of forests through participatory forest conservation and management strategy, To empower forest dependent communities by building their capacity to participate in the sustainable forest management and to improve the livelihood opportunities of the forest dependent communities so as to reduce their dependence on forests.

Though SWATI has been selected to implement this programme in 4 FMUs coming under the DMU during this year it has implementing one FMU Mujagada under Ghumushar North Forest Division in Ganjam district.

Activities of this Year

SWATI has started its initial entry point activities with 25 VSS of Mujagaga forest management Unit. It has started strengthening the VSSs and SHGs through regular meeting, orientation and exposure.

SWATI in association with forest officials, VSS members and villagers has initiated Temporary Survey & Demarcation, Farm Forestry Beneficiary List Collection, Micro planning, regularisation of governing body meeting, Livelihood and income generation planning with SHGs and awareness campaign through observation of international women's day, World Environment day and swachha bharat campaign etc.

The Organisation has also taken initiatives to protect the forests from fire, organised orientations of VSS and villagers in association with forest officials about fire prevention skills and formed anti fire committees in villages.

Impact

This initiative has organised the community to protect the natural forest through Joint Forest Management process and encouraged the villagers to strengthen their forest based livelihood through proper management and protection of forest.



Gender Mainstreaming and Education

Gender Mainstreaming and Education are two major focussed area of SWATI's Intervention. SWATI addresses both practical and strategic gender needs in its community development initiatives making it a cross-cutting issue across all the programmatic interventions of the Organisation. Issues and concerns of the women are factored into all the sectoral interventions through a concerted effort to enhancing women's participation. Livelihood programme of the Organisation



has specific focus on promotion of women livelihoods. NRM interventions have been spearheaded by community organisation with maximum representation of Women. Health Programme of the Organisation has unambiguous focus on addressing the unmet health needs of the women.

SWATI has genderised its personnel policy, formulated workplace policy and formed Committee against sexual harassment. Women component analysis has been integrated into all the tools and techniques of the planning, monitoring and evaluation devised by the organisation.

Similarly SWATI has been given priority for education of the community to strengthen their knowledge base and their informed decision making ability. SWATI has opened educational institutions to give the chance of higher study to the dropout students, arranged regular trainings and orientations for skill development, facilitated the youth for technical and skill based trainings and implemented awareness programmes to educate the community people on different government schemes, citizen rights and responsibilities. The Organisation has opened information centres and developed IEC materials such as leaflets, posters, handbooks and wall paintings for public education and dissemination of messages.

ANANYA – Marriage: No Child's Play

The Project

Child marriage is a violation of child rights, and has a negative impact on physical growth, health, mental and emotional development, and education opportunities. It also affects society as a whole since child marriage reinforces a cycle of poverty and perpetuates gender discrimination, illiteracy and malnutrition as well as high infant and maternal mortality rates. The situation is





particularly alarming in the eastern state of Odisha. The prevalence of the practice is wider in the tribal populated backward districts of the state. Kandhamal district is one among those districts where this practice prevails traditionally among the tribal and rural villagers. Acute poverty, Lack of education, awareness, skill based education opportunity and strong belief on tradition has forced the villagers to follow this illegal practices. SWATI is implementing this project ANANYA for prevention of child marriage in Kandhamal district.

SWATI in association with Save the Children is implementing ANANYA Project in 11 Gram panchayats of K. Nuagaon Block of Kandhamal District. The main objective of this project is to change harmful cultural practices that normalize child marriage whilst providing girls with SRH knowledge and access to the services they need to make informed health decisions. Young people are able to decide if and when to marry and pursue their SRHR in a supportive environment.

The major activities of the programme are to provide girls and their communities with the tools and knowledge to stop early and forced marriages and give girls a better start in life. Providing alternatives to child marriage and mitigating the impact on married girls. Enhancing access to income generating opportunities for girls and their families, providing financial literacy training for girls to increase their ability and power in financial

decision-making, Enhancing access to improved Child protection systems for girls at risk of child marriage and already married girls so that preventive and response measures can be taken, Increasing access to quality youth-friendly SRHR services (that are available, affordable, and acceptable and appropriate) for unmarried and married young people.

Achievement of this Year

SWATI has engaged in identifying the villages, collecting baseline data, enrolled all the adolescents of the villages and collecting case studies about cause and effect of Child marriage practice in the area. It has organized the villagers and discussed about the adverse effect of Child marriage, created mass awareness through Padayatra, Street play, Samavesh, School awareness programme, Highlighted the child marriage issues of the area in legal forums and organized awareness campaign with PRI members, Traditional heads, District Child right protection team, School teachers, Anganawadi and ASHA workers and Students. SWATI has also formed village level adolescent groups, given them training



on adverse effect of child marriage, process to check the child marriage practice and how to motivate the villagers and family members not to allow child marriage. The Organisation has also arranged trainings on life skill, adolescent health, Formal education for dropouts and for vocational trainings and placement opportunity.

Activities in 2017 – 18 Year

Major Activities	Achievement upto previous Year	Achievement during the Year	Cumulative Progress
No. of villages selection for intervention	33	82	115
No. of villages Adolescent Data collection	21	94	115
Cluster Plan Development Exercise Meeting	00	01	01
No. of Village/ Parent Meeting	31	156	187
No. of Village Sensitisation meeting	19	75	94
No. of Meetings with Youth Clubs	00	11	11
No. of meetings with Adolescent girls	00	120	120
No. of L&B Training Batches for DLs	09	28	37
No. of L&B Training Batches for 15-19 year Girl DLs	03	10	13
No. of L&B Training Batches for 20-25 years Girl DLs	04	08	12
No. of L&B Training Batches for 20-25 years Boy DLs	02	10	12
No. of DL Trained (Both Girls & Boys)	161	515	676
No. of DL (15 – 19 years GIRL)	59	168	227
No. of DL (20 – 25 years GIRL)	61	173	234
No. of DL (20 – 25 years BOY)	41	174	215
No. of Adolescent Groups formed	89	250	339
No. of GIRL Groups (10 – 14 years)	30	83	113
No. of GIRL Groups (15 – 19 years)	32	85	117
No. of BOY Groups (15 – 19 years)	27	82	109
Fortnightly Preparatory-cum-sharing meeting of trained DLs.	00	564	564
Session taken at village level	00	2122	2122
GP level Sports for adolescent girls	00	30	30

Major Activities	Achievement during the Year
No. of Residential Teachers training on Child Right, Child Marriage and LSE	2 Nos. 55 teachers
No. of SRHR Training Batches for DLs	06
No. of DL Trained (Both Girls & Boys)	88
No. of DL (15 – 19 years GIRL)	42
No. of DL (20 – 25 years GIRL)	46
No. of AWWs Trained on SRHR	28
GP level capacity building of SMC members on CR, CP, CM, Girl safety in Schools and their role and responsibilities	09
Awareness program for married girls, on delay pregnancy, SRHR Information and MCH	09
Convergence meeting with ICDS	10
Formation of VCPC	43
GP level Capacity Building of GKS members on CR, CM	9 No.
GP Level Capacity Building of VLCPC Members	9 Nos.
Capacity members SMC members on their role & responsibilities	09
Capacity building of PLCPC members	1 No.17 members
GP Level Exposure (No. of Girls)	1028
Block Level Exposure (No. of Girls)	239
Awareness programme on Malaria, Dengue, Diarrheal, Missiles and Rubella	76 villages

SWATI has taken different activities to strengthen the process by different thematic head, Capacity Building of PNGO Staff on Life Skill Education, SRHR, SMC & CPC, Data Base Creation, Cluster Plan Exercise, and Study & Survey: Base Line; Market Research, School Assessment, Doer & Non-Doer (Child Marriage).

The Organisation has also arranged Capacity Building of DLs on Life Skill Education based on Lalita & Babu Module, Plan of action prepared by DL for forming adolescent groups & village

sensitisation program, Fortnightly Preparatory-cum-sharing meeting of trained DLs for taking session in their respective group, Capacity Building of Peer Support Network on Life Skill Education (Session) by Trained DLs and Orientation to Stakeholders on Child Right, Child Protection and Life Skill Education.

Impact

The Process has created awareness among the villagers about the adverse effect of Child marriage. They are well informed about the Social, Economical, Health and legal issues related to child

marriage. Incorporation of Traditional leaders, PRIs, Health workers, Child line members and Teachers in this process has created it more focused and influential.

The process has given strength to the adolescents to say no to their family members for marriage in child age and to take self decision on their own marriage. It has given a platform to them to discuss and decide about their own future related to marriage, Education, employment and other social aspects. It has also freed them from family pressure and burden on marriage and given scope to thinking independently to take decision about their marriage and future.

The life skill development training programmes have provided opportunities for engagement, Higher Education, Employment and income generation to adolescents. SWATI has extended higher education support to 580 School dropout and those are at risk of child marriage. Similarly in support of ASRHR, SWATI has provided engagement



and employment opportunity to educated adolescents those are at risk.

Organisation has strengthen the child and adolescent right protection process from village level to administration and linked to Legal organisations and that has given strength and confidence to adolescents to fight for their right to education, self decision on marriage and future.

REHNUMA

The Project

To protect the rights of Minority and Schedule cast women and to provide them legal support on Atrocity and entitlement cases SWATI is implementing REHNUMA project. The major activities of this programme are Organising minority women, identifying the issues related to their right and entitlement, Capacity Building to access the entitlements, Legal awareness and support and create a pressure group to access government provisions.

SWATI has been implementing REHNUMA project in association with United Nations Women in 22 villages including NAC G.Udayagiri in G. Udaygiri block and 23 villages of Raikia Block in Kandhamal District.

Achievements of this year

SWATI has promoted organisation of women in all villages and made a study on their family status, income and livelihood, Inclusion in different Government schemes, family violence, Atrocities on

women and issues related to their right and entitlements.

During this Year SWATI has organised stakeholder meetings, volunteers training, paralegal trainings and legal aid camps in the villages.

During this year Different cases and claims identified, RTI cases filed, Legal advice given to 15 persons and 6 persons are got legal aid support.

Impact

This process has given an organisational strength to minority women to raise their voice against any kind of injustice to them. Facilitation to access the government programmes has ensured their entitlements.

The legal awareness and support has given them more confidence for legal fight of their rights and against their exploiters.

The process has benefited many beneficiaries to get government provisions. 7 persons have enrolled for IAY, 8 persons in Old age Pension, 11 for FRA land, 19 for labour card and 11 for ration card.

Geetanjali Became the Torch Bearer of child marriage prevention



Geetanjali, the sixteen years old tribal girl of Sarangagada village has bravely stopped her marriage challenging all obstacles from her family, relatives and villagers and has set an example for the community towards prevention of child marriage in the area.

Geetanjali lives with her family in the village Sarangagada of K. Nuagaon, Kandhamal district where child marriage is a traditional practice among the villagers. The main reasons behind the child marriage practice here in the area is Lack of education and awareness among the people, acute poverty and lack of employment opportunity, Big family and lack of attention to girl child, lack of improvement in girls education and employment opportunity and weak implementation of child right law . Geetanjali's family

arranged her marriage when she was studying in matriculation. Though she was in her early age got frightened hearing this news and approached her parents not to give her marry so early. She expressed her wish to read more but her parents rejected her proposal. They had impression that if the girls will educated it will be difficult to arrange a groom for them and it will be also give them burden of dowry. But Geetanjali has some knowledge about the bad impact of child marriage and she calculated that if she will not oppose it then her life will spoil. She will face physical and health problems and also will victim of domestic violence in in-laws house because of her immature knowledge on marriage. So she determined to stop this marriage anyhow.

She first tried to explain her family members and when they didn't listen she contacted with the field officer of Save the Children and expressed her problem. The Field officer counseled her family and suggested them to stop the marriage as it is illegal and punishable by the law. The family members said that if they will break the marriage then the community will punish them. So the worker of Save the Children convened a meeting of the both family, villagers and community heads and discussed about the matter. Geetanjali directly expressed her unwillingness of marriage and her intention of higher study. At last members of both families agreed with her the marriage stopped.

Now Geetanjali is studying in the 12th standard and wishing for vocational training. She has involved in Child Marriage Prevention drive of Save the Children and SWATI and has taken the lead role to motivate the adolescent and community people about the bad impact of child marriage. She has successfully stopped five child marriage cases in her own village and neighboring villages.



National Institute of Open Schooling (NIOS)

SWATI has established a Study Center under National Institute of Open Schooling (NIOS) at Bandhagada helping the dropout children gain access to formal education since 2011. Swati had joined with FVTRS from 2006-07 through skill development programmes like cycle repairing, carpentry, terracotta and food processing for the local dropouts. At that time SWATI had surveyed to find out the percentage of dropouts and planed to enroll them for higher education and education. In 2011 FVTRS started support to SWATI for opening the National Institute of Open Schooling (NIOS) center at Bandhagada accredited as AI-AVI-SLEID. Now NIOS is providing the following supports to Dropouts through Study center.

Offline enrollment, examination registration, study material distribution, personal contact programmes and conduct practical examination.

NIOS is trying to create a friendly environment between student and facilitators for a easy learning process through different workshops and training programmes

NIOS is trying to contact directly with the learners for smooth communication by issuing ID card till getting their certificate.

During 2017-18 Academic Year 54 students have enrolled, 27 appeared examination and 13 students have passed out from the study centre. Since inception total 720 students have been registered in NIOS, Out of them 560 Students have appeared the examination. Total 335 students have passed out from the Institute. The total success percentage is 62%, out of which 41% students are continuing their Higher Study and 21% students have got jobs in various sector.

STUDY RESEARCH AND DOCUMENTATION

Documentation' plays an important role in effective functioning and success of an organization. Holistically, it goes beyond the rhetoric of routine reporting on programmes and activities. SWATI believes that Good documentation and communication are crucial for creating a favourable environment for the programme/project in the organization and the community. Documentation of success stories, innovative experiments facilitate intensive learning, training, advocacy, programme planning, public relations, review and sharpening of goal and vision of implementing organization. With the broadening and deepening of the developmental interventions SWATI has enriched its internal as well as external documentation. It prepares quarterly, half yearly reports and publishes Annual report of the organization.

SWATI has published "Eei Matira Katha" and "Jibanadhara" books on Livelihood and Health.

SWATI has also published posters, brochures and leaflets on MNREGS, FRA and PESA, Malaria, AIDs, Environment and Swachha Bharat Abhiyan. SWATI has published hand books on Jangala Jami Adhikar (Odia), developed and distributed public education materials on MGNREGS, Mother and Child health and Women rights.

SWATI has prepared Audio Visual Documentary on MGNREGS, Agriculture, DBI, Tribal Development, WADI, Hydro Project, Maternal Newborn Child health and Nutrition and Malaria. SWATI has also developed an audio CD on different development themes. To educate the villagers and to disseminate information SWATI has opened panchayat level information centers and public library at Paburia, Bandhagada and Phulbani.

HEALTH



Health is a major concern for the undeveloped area and poor community and the enjoyment of the highest attainable standard of health is one of the fundamental rights of every citizen. Health service is not only the top priority of the social development it is the basic need and right to live of the people. The United Nation has also given priority to this in its Sustainable Development goal no – 3 and ensured good health and well-being for all at all ages. Health Program of SWATI has evolved over the years as an important anchorage of its engagement with the community. It was confined to sensitization and awareness building during the initial years of Organization, but now it

holds significance on account of its outreach and diversity. SWATI has been implementing numbers of programmes with the support of State government, Health department and non-government support to address the health issues and needs of the area.

In previous years SWATI had implemented Maternal Newborn Child Health and Nutrition (MNCHN) programme, V4 Sub-centre Programme, Malaria eradication Programme, PEHCHAN for transgender community , Swacha Bharat Abhiyan and Community led Sanitation, Solid Liquid Waste Management and Vegi-cart in its project area. Health Programme of the Organisation at present; includes project on Maternity Waiting Home, Targeted Intervention Programme for AIDs awareness and treatment, Marriage No Child's Play (MNCP) to check the child marriage and to improve the adolescent health and awareness and Bike Ambulance.

Targeted Intervention (TI)

The Project:

With the Objective to prevent infection through saturation coverage of high- risk groups, provide care, support and treatment to PLHA, strengthen the infrastructure, system and human resources in prevention, care, support and treatment programme and strengthen strategic information management system SWATI has been implementing Targeted Intervention Programme since 2010 for core group of FSWs spread across five blocks i.e; Khajuripada, Phulbani, Phiringia, Tikabali and G.Udayagiri covering 350 female sex workers (home based – 285 and Street based – 65).

Under this Project SWATI has taken different program activities like: Condom Promotion



(Promotion/Distribution of Condoms)- Condom demonstration and distribution, Social Marketing and Establishment of Condom Outlet, Develop Inter-personal Behavior Changes Communication, Community Mobilization and IEC activities, STI

Clinic provisions of services for Sexually Transmitted Infections, Establishment of Drop-in Centers, Establishment of STI clinic and health camp organisation for Referral and linkage service,



Linkage to Integrated Counseling and Testing Centers (ICTC), Creation of enabling environment (Advocacy for Enabling Environment and enrolling more and more TGs through counseling and mobilization).

Achievements of this Year

Condom Promotion

The intervention has planned for promotion of correct and consistent use of condom among the target population groups by making condom **3A i.e. accessibility, availability & affordability**. For increasing access to the condom, 12 condom outlets have been opened and free condoms has supplied by the project. Besides, the P.Es is also supplying the free condom as per their estimated demand regularly during counseling sessions. During this year 92298 no's free condoms has been distributed and 2996 sold through social marketing.

Community Mobilization

This is aimed at building community ownership of the TI objectives. Committees like Hotspot level committees, DIC management committee are formed for planning, building the capacity of the groups to assume ownership of the programme.

SWATI has organized 18131 One to One session, 1051 One to Group Session and Focus Group discussion with the target groups. SWATI in collaboration with district administration has

observed the World AIDS Day in the district headquarters Phulbani also at field level Khajuripada, Kelapada, Tikabali, G. Udayagiri and Paburia. In field level there was a blood donation camp organized at Phiringia by the help of Ama Odisha and SWATI. 30 no's of blood units collected from the camp.

Referrals and linkages

The Identified KEY POPULAIONSS are referred to ICTC at DHH, Phulbani and FICTC opened at G. Udayagiri, Tikabali, Phiringia and Khajuripada for quality HIV testing and counselling. From February 2018 as per the new counseling and testing guide line TI partner SWATI organised the Community Based Screening and Testing (CBST) at field level. OSACS has already given training to Counselor and ORW for CBST.

Establishment of Drop-in-Centers (DIC)

To give facility for interaction, rest, seek advice, share information, approach someone in case of a crisis or pick up condoms SWATI has opened one DIC (Drop-in Centre) at the T.I. Office, Phulbani and another at G .Udayagiri.

Establishment of STI Clinic

During the period 5 no's of PPP clinic has been opened i.e. Khajuripada, Phulbani, Phiringia, G. Udayagiri & Tikabali.

Health Camps

During the period SWATI has organized 2 health camps in the outreach areas i.e. Khajuripada and Phiringia.

Facilitation for Social Security Schemes

During this year SWATI has facilitated the KPs to get benefits from different Social Security Schemes of the Government. Total 287 KPs have benefited through different government schemes.



Social Security Programmes for Key Persons

SL NO	Name of the Hot Zone	Indira awash		Pension		Ration Card		Adhar Card	
		Eligible	Covered	Eligible	Covered	Eligible	Covered	Eligible	Covered
01	Phulbani	12	04	13	06	39	24	70	42
02	Phiringia	14	07	14	09	42	37	82	56
03	Khajuripada	11	06	13	10	51	36	68	51
04	G.Udayagiri-	18	0	12	06	54	48	63	49
05	G.Udayagiri-	17	0	19	09	46	38	66	37
06	Tikabali	21	18	28	19	49	43	71	52
TOTAL		93	35	99	59	281	226	420	287

Impact

The project has created an impressive impact towards checking the STI/HIV & AIDS infections in High Risk Behaviour Groups and the general population. It has created awareness and practice for Adoption of safe sexual practice measured in terms of increase in use of condom, increased understanding on the ways of that infection spreads, facilitated to accessing clinical health services and taken measures to reduce risk level from high to low.

The Project has also given an alternative income source to the Female Sex workers through different income generation trainings and facilitated to include in different social security schemes.

The project has organized the FSWs and given legal support and advocacy support to them, promoted their organization to fight for their rights and entitlements. The regular interaction, Orientation, counseling, clinical support and care by the organization have increased their self confidence towards a healthy and purposeful life.

BIKE Ambulance

To Ensure the Institutional Delivery of the Pregnant Mothers in inaccessible area of Kandhamal and to provide Ambulance facility at the door step SWATI has started BIKE AMULANCE service from this year in Phiringia Block area with the support of National Health Mission, Kandhamal. This Bike Ambulance can reach in inaccessible villages and provide

service to the villagers in free. This service will support in transportation of delivery mothers and will reduce the percentage of IMMR and MMR in the remote villages. This will also engage in transporting sick/newborn children up to 5 year and emergency health care.

Maternity waiting Home (MAA GRUHA)



The Project

Establishment of Maternity waiting homes in remote and inaccessible areas has been one of the initiatives designed under National Rural Health Mission to increase institutional delivery so that maternal mortality as well as Neo Natal Mortality could be reduced. Maternity Home not only provides accommodation facility to the pregnant mother, days before the expected date of delivery but also health care services by trained health professionals and includes provisions of nutritious food for the pregnant mothers. SWATI has been managing a maternity waiting Home at Balandapada of Phiringia Block since August 2013 with the support of National Rural Health Mission of Government.

The outreach area of the Maternity have covers six panchayats i.e Luising, Balandapada, Pahiraju, Krandibali, Kuirimunda and pakari. These areas are mostly remote and inaccessible and far away from government health facilities. Villagers are mostly depending on traditional healers and local quacks for health service. Poverty and lack of awareness have been forced them to adopt traditional health care practice since generations. Lack of money for treatment, distance of medical and health institutions from village, lack of government

initiatives to provide health facilities at village level, inactive village level health institutions, absent of good doctors in medical, traditional bondage and many such problems have been made the villages inaccessible to modern health care services.

Activities of this Year

The responsibility holders of the Maternity waiting Home have been able to built rapport with the government duty bearers (Doctor, Staff, Nurse, ANMs), grassroots health service providers (ASHA, AWWs) and the Community, Panchayatiraj Representatives and leaders of the CBOs like SHGs & GKSs, The Coordinator and the Attendants participate in ICDS sector meetings, ASHA sector meetings and VHND sessions.

The responsibility holders collect center wise information on EDD of expecting mothers, follow up them intimating their family members on the importance of the institutional care and facilities available in the Maternity Home. Upon arrival of pregnant mother she is registered with the Maternity Home, vital health statistics are recorded, regular checkup is done so also counseling. The pregnant mothers are provided institutional delivery facility by Doctors and ANMs





and also after delivery facility to Mother and newborn child for one to four week. Follow up and Counseling to lactating mother extended up to 6 weeks through home visit and to check MMR due to improper care and practice. In the case of high risk delivery the pregnant are referred to district medicals.

The Center has organized Mothers convention, Village discussions on Mother and Child health and food and nutrition in village level.

The Center has encouraged and supported the families for kitchen garden and Nutritional garden promotion.

The Center has awarded Anganawadi and ASHA in Gandhi Jayanti for their achievement for mother and child care.

This year 293 pregnant women have admitted in the Maternity Home for delivery.

Impact

This programme has created confidence among pregnant mothers on institutional delivery and increased their awareness level on pregnancy care and Neonatal care. It has also created awareness on medical facilities and government provisions on delivery among the villagers. It has given motivation

to not believe blind beliefs, not to perform unhealthy rituals and not to depend on traditional healers and quacks. This programme has also activated the village level health institutions, Anganawadi centers and Gaon Kalyana Samiti activities.

Status of 2017-18

Month	Total EDD Mothers	Total Admitted	Delivery status		
			Live Birth	Still Birth	Total
April - 17	45	42	39	02	41
May - 17	29	27	19	01	20
June- 17	17	19	21	01	22
July- 17	19	17	14	0	14
Aug- 17	18	15	16	0	16
Sept- 17	22	20	09	0	09
Oct- 17	19	17	21	01	22
Nov - 17	23	20	19	0	19
Dec- 17	21	16	15	02	17
Jan - 18	28	26	13	01	14
Feb-18	27	26	22	01	23
Mar-18	51	48	38	03	41
Total	319	293	246	12	258

Governance and Panchayati Raj

Empowerment is the base of the Development and through this community empowerment, therefore, is more than the involvement, participation or engagement of communities. It implies community ownership and action that explicitly aims at social and political change. Community empowerment is the process of re-negotiating power in order to gain more control. So SWATI has been always given importance to strengthen the community empowerment processes in its projects and activities. SWATI has been promoted different community based organisations and given them orientation to act for community rights and interest. It has been implementing PRI, Good Governance and Social Justice programmes to empower, educate, aware and organise the community enabling them to access their citizen rights and government programmes and schemes and to participate actively in governance process.

Under this initiative SWATI has strived to strengthen the structure, system and procedures of governance imparting capacity building trainings to



PRI members, sensitization, Knowledge and skill building of the community and handholding support for realization of rights and entitlements are the mandates of the initiative. Constant endeavour in strengthening community based organisations and networking of CBOs to create a pressure group and facilitation of planning and its execution has impacted the lives and livelihoods of the partner community.

Social Audit

SWATI is implementing Social Audit programme in 4 blocks of Kandhamal, 3 blocks of Khordha and 3 blocks of Ganjam in association with state government and District Administrations. The main Objective of this process is to access the physical and financial gaps between needs and resources available for local development and to create awareness among beneficiaries and providers of local social and productive services. It is the technique to understand, measure, verify, report on and to improve the social performance of the department and the process to identify narrow gaps between vision/goal and reality, between efficiency and effectiveness. SWATI has effectively implemented this process in targeted clusters and organised camps with administration and villagers,

identified gaps and irregularities and negotiated concern department to correct the mistakes and faults.

Due to this process many villagers have got their pending dues in MGNREGA works, Indira Awas, Pension and other social security and government provisions.

Many Departments have rectified their implementation faults in project work and many pending works have complemented.

This process has created a clean relationship between departments and the villagers and empowered the community on information and implementation of government development programmes.



AN APPEAL

SWATI, a non-governmental voluntary organization has been working since 1997 in the field of Tribal and Rural development. Its initial engagement in the Natural Resource Development has broadened its programme and activities as well as its perspective helping its take a holistic approach of the lives and livelihood. The present shift has been towards adoption of the livelihood approach rather than a sectoral approach to resource management.

Not only there has been adoption of a holistic perspective, the interventions during these years have established models for propagation and replication. SWATI has planned for further diversification of its activities in the coming days. Keeping in mind the recent change in the society; SWATI has planned to establish an Old Age Home and a Shelter for Homeless Children. Its modalities will be worked out further, once the idea gets across and the individuals and organizations build partnership with SWATI for the cause.

SWATI solicits donations from individuals as well as organizations to contribute for the noble cause. The Organization has been registered under 80G for the donor and contribution to get exemption as per the provision under Income Tax Act.

At the same time SWATI pledges to remain accountable to the donor and contributors and promises to take all the measures for effective utilization of the funds so that the noble cause for which the contribution made is realized.

STATUTORY INFORMATION

Statutory Auditor	:	M/s. Anil Patro & Associates, Bhubaneswar
Internal Auditor	:	Dharani and Company, Bhubaneswar
Legal Advisor	:	Adv. Ratikanta Mohapatra, Bhubaneswar
Bankers	:	State Bank of India, Paburia/Gutingia/Sarangada/ G.Udaygiri/ Phulbani/Tumudibandha, Berhampur ADB, G.Udaygiri, UGB Phulbani/Belaghar, Andhra Bank, Gosani Nuagaon, Podamari
Public Information Officer	:	Er. Hari Sankar Rout, Secretary, SWATI
First Appellate Authority	:	Prasanta Satapathy, Chairman, SWATI

GOVERNANCE				HUMAN RESOURCE PROFILE				
Category	Male	Female	Total	Level	Male	Female	TG	Total
GB Member	4	3	7	<5000	18	21		39
General Body Member	7	4	11	<10000	24	15	2	41
Full time staff	52	39	91	<15000	7	6		13
Part Time staff	7	5	12	<20000	5	3		8
				>20000	2			2
				Total	56	45	2	103

SWATI GOVERNING BODY & GENERAL BODY MEMBERS

Name of the Board member	Address	Gender	Position in the Board
Mr Prasant Satapathy	Plot no – 219/1386/2632,Bhubaneswar - 751001, Dist: Khurda, Odisha Mob – 9437242872, E-mail: prasantasatapathy@gmail.com	Male	Chairman
Mrs. Rasmirekha Khatua	At – Nadikhandi Sahi, PO – Phulbani – 762001, Dist – Kondhamal, Odisha Mob – 9438061108, E-mail: bnkhatua@rediffmail.com	Female	Vice-Chairperson
Er. Hari Sankar Rout	At – Pradhan Colony, PO – G.Udayagiri– 762100, Dist – Kondhamal, Odisha. Mob – 9437186128, E-mail: swati_pab@yahoo.co.in	Male	Secretary
Mr. Santanu Kumar Mishra	At – Amala pada, PO – Phulbani – 762001, Dist – Kondhamal, Mob – 9437192365, E-mail: paribes_plb96@rediffmail.com	Male	Treasurer
Mrs. Premasi Nayak	District Programme Officer, OLM, Dhenkanal, Mob - 9437359381	Female	G.B Member
Mrs. Sujata Mohapatra	K-4, LIG - 744, Kalinga Nagar, Po – Patrapada, Bhubaneswar - 751019, Dist: Khurda, Odisha, Mob – 9861732858, E-mail- Sujjiosam@gmail.com	Female	G.B Member
Mr. Prasanta Kumar Mishra	At /PO – Tikabali, Dist – Kondhamal Odisha- 762010. Mob - 9437765167	Male	G.B Member
Mrs. Santana Nayak	At – Nuasahi, PO – G.Udayagiri– 762100, Dist – Kondhamal, Odisha, Mob - 9438043680	Female	General Member
Mr. Lal Nanda Pradhan	At /PO – Paderi pada, Tala Dandikia, Via – Bandhagada, Dist – Kondhamal , Odisha, Mob - 9439267104	Male	General Member
MrJimuta Prasad Mishra	MIG- 2, 27/1, OSHB Colony, Chandrasekharapur Bhubaneswar, Dist – Khurda, Odisha Mob - 9337103930 , E-mail- jimutamishra@gmail.com	Male	General Member
Mr.Prasanta Kumar Das	At – Nuasahi, PO – G.Udayagiri– 762100, Dist – Kondhamal, Odisha, Mob – 7750009500, E-mail – tukuonly@gmail.com	Male	General Member

Social Welfare Agency & Training Institute (SWATI)

Regd. Office At: Trinath Temple Street, PO: Gosaninugaon, Dist: Ganjam, Pin:760003, Odisha.

Project Office: At/Po: Paburia, Dist: Kandhamal- 762112 (Odisha)

Consolidated Receipts & Payments Account for the Year ending 31st, March 2018

Receipts		Amount (Rs)	Amount(Rs)	Payments		Amount (Rs)	Amount (Rs)
To	Opening Balance (Annex- I)			By	Programme Expenses (As per Annexure-I)		
	Cash in Hand				MNCP	43,49,793.00	
	Grant	1,796.00			WADI (Proj)	33,39,355.70	
	General	5,947.00	7,743.00		IWMP-IX	46,594.75	
					WADI (Adm)	6,37,354.50	
	Balance with Bank				OTELP-Extension, Tumudibandha	9,30,946.00	
	Grant	46,53,485.38			OTELP-Plus, Tikabali	9,33,923.00	
	General (Includes Staff Dev and Corpus)	11,76,649.12			TI-FSW, Phulbani	12,48,804.00	
	General (FC)	4,24,871.50	62,55,006.00		Maternity waiting Home	11,78,879.00	
					Swachha Bharat Mission	2,28,000.00	
To	Grants-in-Aid (As per Annexure-I)				FADP, ITDA, Balliguda	9,25,560.50	
	MNCP	46,64,829.00			FADP, ITDA Phulbani	3,90,000.00	
	OTELP-Extension, Tumudibandha	15,10,000.00			Division Based Irrigation, SDTT, Mumbai	44,81,514.25	
	OTELP-Plus, Tikabali	13,95,000.00			Block Resource Centre	1,46,175.00	
	TI-FSW, Phulbani	11,48,352.00			NULM	21,45,688.00	
	Maternity waiting Home	11,80,068.00			OFSDP	3,26,116.00	
	Swachha Bharat Mission	3,83,966.00			Millet Promotion	3,82,500.00	
	FADP, ITDA, Balliguda	11,17,500.00			Rehnuma	4,79,479.00	221,70,682.70
	FADP, ITDA Phulbani	4,20,000.00					
	Division Based Irrigation, SDTT, Mumbai	40,00,000.00		By	SWATI General A/C Payments		
	Block Resource Centre	1,37,500.00			Program Expenses	53,42,591.00	
	NULM	24,44,000.00			Administrative Expenses	18,90,901.27	
	OFSDP	2,77,259.00			EPF Deposited	1,75,901.00	
	Millet Promotion	8,16,000.00			Professional Tax Deposited	30,600.00	
	Rehnuma	5,70,254.00	200,64,728.00		TDS Paid	31,816.00	74,71,809.27
To	Bank Interest (Annex- I)				Capital Expenses		
	MNCP	30,473.00			Renovation of Training Centre	2,45,085.00	
	WADI (Proj)	1,19,791.00			Land Conversation	31,315.00	
	IWMP-IX	704.00			Furniture & Fixtures/Motor Vehicles	3,72,018.00	6,48,418.00
	OTELP-Plus, Tikabali	284.00					
	TI-FSW, Phulbani	1,393.00			Investment		
	FADP, ITDA, Balliguda	3,243.00			Fixed Deposit (As per Annexure-V)	11,10,000.00	11,10,000.00
	Division Based Irrigation, SDTT, Mumbai	32,744.00					
	Millet Promotion	1,577.00	1,90,209.00		Security Deposit		
To	Other Receipts (Projects)(Annex- I)				EMD at SUDA (4 ULBs for 2nd Agreement)	40,000.00	
	OTELP-Extension, Tumudibandha	2,52,000.00			Performance of Bank Guarantee at SUDA (4 ULBs for 2nd Agreement)	1,00,000.00	1,40,000.00
	OTELP-Plus, Tikabali	1,80,000.00					
	TI-FSW, Phulbani	989.00	4,32,989.00		Loans and Advances		
To	LOANS & ADVANCES				Advance for Purchase of Flat	4,20,000.00	
	Rehnuma (Earlier Advance)	20,000.00			Advance for Office Rent (Phulbani)	20,000.00	
	Rehnuma (C.Y. Loan)	9,985.00	29,985.00		Staff Advance (OFSDP)	46,441.00	4,86,441.00
To	Earnest Money Deposit			By	General (FC) A/C Payments	8,270.25	8,270.25
	NULM, Khordha	10,000.00	10,000.00				
To	SWATI General A/C Receipts				CLOSING BALANCE (As per Annexure-II)		
	Bank Interest	72,365.00			Cash-in-Hand		
	Other Receipts (Program)	43,09,346.00			Grant	2,796.00	
	Other Receipts (Other Sources)	45,18,803.00	89,00,514.00		General	2,995.00	5,791.00
	EPF Collected	82,420.00			Balance with Bank		
	Professional Tax Collected	26,125.00			Grant	20,96,221.55	
	Redemption of Fixed Deposit	2,60,645.00			General (Includes Staff Dev and Corpus)	18,15,478.98	0.00
	TDS Collected	4,350.00			General (FC)	4,34,121.25	43,45,821.78
	Security Deposit Received	1,05,000.00	4,78,540.00				
To	General (FC) A/C Receipts	17,520.00	17,520.00				
	Total		363,87,234.00		Total		363,87,234.00

Place: Paburia

Date: 31.05.2018

Chairman

Chairman
SWATI

Secretary

Secretary
SWATI

Treasurer

Treasurer
SWATI

For Anil Patro & Associates

Chartered Accountants

(P. Anil Kumar Patro)

Partner



Social Welfare Agency & Training Institute (SWATI)

Regd. Office At: Trinath Temple Street, PO: Gosaninuagaon, Dist: Ganjam, Pin:760003, Odisha.

Project Office: At/Po: Paburia, Dist: Kandhamal- 762112 (Odisha)

Consolidated Income & Expenditure Account for the Period from 01.04.2017 to 31.03.2018

Expenses		Amount (Rs)	Amount(Rs)	Income		Amount (Rs)	Amount (Rs)
To	Project Expenses (Annexure-I)			By	Grants-in-Aid (Annexure-IV)		
	MNCP	43,32,375.00			P.Y. UU Grant: Utilized		
	WADI (Proj)	33,39,355.70			IWMP-IX	44,296.00	
	IWMP-IX	42,500.00			TI-FSW	51,903.00	
	WADI (Adm)	6,37,354.50			OTELP Plus, Tikabali	1,003.00	
	OTELP-Extension, Tumudibandha	9,30,946.00			OTELP Extension, Tumudibandha	1,000.00	
	OTELP-Plus, Tikabali	9,33,923.00			WADI Development (Proj)	33,39,355.70	
	TI-FSW, Phulbani	12,48,804.00			WADI Administration	500.63	
	Maternity waiting Home	11,77,079.00			FADP, ITDA, Phulbani	1,510.00	
	Swachha Bharat Mission	2,28,000.00			FADP, ITDA, Balliguda	288.00	
	FADP, ITDA, Balliguda	9,23,860.50			Division Based Irrigation/SDTT, Mumbai	99,919.00	
	FADP, ITDA Phulbani	3,90,000.00			Rehnuma	831.00	
	Division Based Irrigation, SDTT, Mumbai	44,81,514.25			MNCP- Save the Children	64,176.00	36,04,782.33
	Block Resource Centre	1,46,175.00					
	NULM	19,01,288.00			C.Y. Grant: Utilized		
	OFSDP	2,92,259.00			TI-FSW, Phulbani	11,95,912.00	
	Millet Promotion	3,82,500.00			Millet Promotion	3,82,500.00	
	Rehnuma	4,79,479.00	218,67,412.95		FADP ITDA, phulbani	3,88,490.00	
					FADP ITDA, Balliguda	9,24,683.50	
					Block Resource Centre	1,46,175.00	
					WADI, Administration	6,36,853.87	
To	SWATI General A/C				OTELP-Extension, Tumudibandha	6,77,946.00	
	Program Expenses	53,42,591.00			Maternity waiting Home, CDMO	11,78,879.00	
	Administrative Expenses	20,11,848.27	73,54,439.27		OFSDP	3,26,116.00	
					OTELP PLUS, Tikabali	7,52,920.00	
To	General (FC) A/C Expenses	8,270.25	8,270.25		Division Based Irrigation, SDTT	43,54,388.00	
					Swachha Bharat Mission	2,28,000.00	
To	Written off- Grants Receivable	94,039.00	94,039.00		MNCP (FC)	42,68,199.00	
					NULM	21,35,688.00	
					Rehnuma	4,48,663.00	180,45,413.37
				By	Bank Interest		
					MNCP	30,473.00	
					WADI (Proj)	1,19,791.00	
					IWMP-IX	704.00	
					OTELP-Plus, Tikabali	284.00	
					TI-FSW, Phulbani	1,393.00	
					FADP, ITDA, Balliguda	3,243.00	
					Division Based Irrigation, SDTT, Mumbai	32,744.00	
To	Depreciation (Annex-III)	3,92,222.76	3,92,222.76		Millet Promotion	1,577.00	1,90,209.00
				By	Other Receipts		
					OTELP-Extension, Tumudibandha	2,52,000.00	
					OTELP-Plus, Tikabali	1,80,000.00	
					TI-FSW, Phulbani	989.00	4,32,989.00
				By	General A/C Income		
					Bank Interest	72,365.00	
					Other Receipts (Program)	43,09,346.00	
					Other Receipts (Other Sources)	45,08,803.00	88,90,514.00
To	Excess of income over exp.	14,65,043.47	14,65,043.47	By	General (FC) A/C Income		
					Bank Interest	17,520.00	17,520.00
	Total		311,81,427.70		Total		311,81,427.70

Place: Paburia
Date: 31.05.2018

Chairman

Chairman
SWATI

Secretary

Secretary
SWATI

Treasurer

Treasurer
SWATIFor Anil Patro & Associates
Chartered Accountants(P. Anil Kumar Patro)
Partner

Social Welfare Agency & Training Institute (SWATI)

Regd. Office At: Trinath Temple Street, PO: Gosaninuagaon, Dist: Ganjam, Pin:760003, Odisha.

Project Office: At/Po: Paburia, Dist: Kandhamal- 762112 (Odisha)

Consolidated Balance Sheet as on 31st, March 2018

Liabilities & Capital	Amount (Rs)	Amount(Rs)	Assets	Amount (Rs)	Amount (Rs)
ORGANIZATION FUND:			As per Annexure- III		
			MOVABLE ASSETS		
Balance as on 01.04.2017	125,59,815.81		Opening Balance	15,06,349.31	
Add Excess Income over Exp.	14,65,043.47	140,24,859.28	Add: During the Year	3,75,518.00	
				18,81,867.31	
			Less: Sold During the Year	10,000.00	
				18,71,867.31	
			Less: Depreciation	3,19,258.14	15,52,609.17
CURRENT LIABILITIES:					
PROVISIONS:			IMMOVABLE ASSETS		
			Land		
Un-utilised Grant (As per Annex-IV)		19,54,137.80	Opening Balance	4,87,386.00	
			Add During the Year	31,315.00	5,18,701.00
Security Deposit for Land Lease		1,000.00			
			Building		
Professional Tax			Opening Balance	15,47,394.12	
Opening Balance	4,475.00		Add During the Year	2,45,085.00	
Add: Collected during the period	26,125.00			17,92,479.12	
	30,600.00		Less Depreciation	72,964.62	17,19,514.51
Less: Paid during the year	30,600.00	0.00			
			Security Deposit		
Loan from C.K.Nayak (Rehnuma)	9,985.00	9,985.00	Opening Balance	1,48,200.00	
			Add: During the Year	1,40,000.00	
				2,88,200.00	
			Less: Received During the Year	1,05,000.00	1,83,200.00
			Loans & Advances (As per Annexure-I)		
			Staff Advance (MNCP)	17,418.00	
			Staff Advance (OFSDP)	6,131.00	
			Staff Advance (OFSDP from SWATI Gen)	46,441.00	
				69,990.00	
			Less: Recovered During the Year	0.00	69,990.00
			Office Rent Advance (Phulbani)	20,000.00	20,000.00
			Office Rent Advance (BAM-NULM)	1,500.00	1,500.00
			Staff Advance (Rehnuma)	20,000.00	
			Less: Recoverd During the Year	20,000.00	0.00
			Earnest Money Deposit		
			Opening Balance	1,10,000.00	
			Add: During the Year	0.00	
				1,10,000.00	
			Less: During the Year	10,000.00	1,00,000.00
			On-lending loan with SHGs		73,277.50
			Revolving Fund Advances with SHGs		37,600.00
			Grants Receivable (As per Annexure-IV)		38,26,731.12



			<u>Tax Deducted Source</u>		
			Opening Balance	4,19,443.00	
			Add: During the Year	<u>2,72,126.00</u>	
				6,91,569.00	
			Less: Received During the Year	0.00	6,91,569.00
					-
			Advance for Purchase of Flat	12,80,000.00	
			Add: Paid During the Year	<u>4,20,000.00</u>	17,00,000.00
			<u>Current Assets (As per Annexure-II)</u>		
			<u>Cash in Hand</u>		
			Grant	2,796.00	
			General	<u>2,995.00</u>	5,791.00
			<u>Balance with Bank</u>		
			Grant	20,96,221.55	
			General (Includes Staff Dev and Corpus)	18,15,478.98	
			General (FC)	<u>4,34,121.25</u>	43,45,821.78
			Fixed Deposit at Bank (As per Annex- V)		11,43,677.00
			Total	Total	159,89,982.08

Place: Paburia
Date:31.05.2018

For Anil Patro & Associates
Chartered Accountants

Chairman

Chairman
SWATI

Secretary

Secretary
SWATI

Treasurer

Treasurer
SWATI

(P. Anil Kumar Patro)
Partner







Project Office –
Paburia, Phulbani, Bandhagada,
G.Udayagiri, Balandapada, Belaghar
and Tumudibandha of Kandhamal District

Bhanja Nagar, Dengaosta and
Berhampur of Ganjam District
Butpalli of Boudh District
and Bhubaneswar of Khordha District

Social Welfare Agency and Training Institute (SWATI)
Registered Office : At – Trinath Temple Sahi, Po – Gosani Nuagaon,
Berhampur, Ganjam - 760003

