

# ANNUAL REPORT



2018-19



Social Welfare Agency & Training Institute



(SWATI), Kandhamal, Odisha

## Preface



It is my great pleasure to share SWATI's Annual report for the year 2018-19 on behalf of the friends and well wishers of SWATI. I am also feeling proud to inform that SWATI has reached its twenty years in social development. On hindsight, we feel happy that we have been contributing to community development for the last 20 years. We look bemused at the time past thinking of the challenges, the difficulties and the hardship we could overcome. Neither challenges nor opportunities have swept us off our feet. We feel proud that every single individual associated with us at different points of time has contributed his/her best in serving the partner

community and the society.

During this year SWATI has successfully completed some projects and initiated some new projects in expansion areas. It has given priority on Early childhood care and Education for the children of most marginalised communities and provided support of Bike Ambulance and Delivery Van for institutional delivery of Pregnant women in inaccessible areas of Phiringia block. The child marriage prevention programme ANANYA to provide girls and their communities with the tools and knowledge to stop early and forced marriages and give girls a better start in life, has taken a widespread campaign throughout the district and enhanced access to improve Child protection systems for girls at risk of child marriage. SWATI has achieved in livelihood sustainability through convergence programmes by successfully implementing Mission – 171 of District administration, plantations through MGNRGA, Ama Jangala Yojana of OSFDP, WADI development, OTELP, FADP and NULM.

Apart from its programme based activities SWATI has initiated Youth Voluntarism and Community based Voluntarism through blood donation camps, Relief work for Titli affected villagers, Cultural and sports events, Awards and Recognition programmes for community leaders and social activists. SWATI has also planned to observe 150 years of Mahatma throughout the year by organising different social activities in its working districts.

We place on record our sincere thanks to the stakeholders in our operational area and donors/support agencies – District administration, DRDA, DWSM, CDM, PHO, Kandhamal, PSU OTELP, Ministry of ST & SC Development & Ministry of Urban Development, Govt. of Odisha, OSFDP, DFO Bhanjanagar, Odisha Millet Mission, SDTT Mumbai, OSACS, IRRI, CRY, TATA Trust, NABARD, OWDM, NIOS, SAVE THE CHILDREN for their co-operation. The year ahead beckon us for dedicated action and commitment and with support and guidance we are determined to bring the changes we have envisaged.

With Solidarity

**Er. Hari Sankar Rout**

Secretary, SWATI

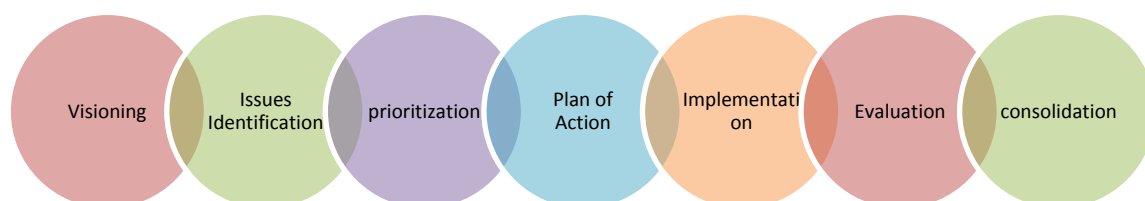
## Twenty Years Journey of SWATI in Social Development

After a few months Social Welfare Agency and Training Institute ( SWATI ) will complete its 20 years successful journey in the field of social service to the disadvantage section of the Society. Within this time period SWATI has not only proved its dedication towards the cause of people and community but also set many successful examples on sustainable development processes. Here we are giving some milestones of our journey.

YEAR	MILESTONES
Year 1999	SWATI got registered in the year 1999 by some likeminded friends under the leadership of Er.Harisankar Rout for the upliftment of the poor people in a holistic development approach.
Year 2000	SWATI started its intervention from a small pocket of Tikabali and Phiringia Block of Kandhamal District and facilitated villagers access to and implementation of government Health and sanitation programmes
Year 2001	SWATI started its intervention in Natural Resource Management through community mobilisation and SWATI began its NRM Interventions adopting the watershed approach in Tikabali and Phiringia block of Kandhamal district.
Year 2002	To empower the women and to ensure their active participation on community development SWATI formed Self-help groups and undertaken Microfinance and Micro-enterprise Development activities in response to its mandate of creation of livelihood opportunities.
Year 2003	SWATI implemented watershed projects under Drought Prone Area Programme covering 3010.375 hectares comprising 6 micro watersheds in Tikabali Block
Year 2004	SWATI strengthened natural resource management based livelihoods through agricultural development, plantation, vegetable cultivation, poultry, fishery and goat farming.
Year 2005	To prevent the domestic violence on women and to aware the community on women right SWATI took the leadership of WE CAN Change campaign as the convenor of district level alliance of 10 NGOs.
Year 2006	SWATI launched an awareness campaign on Malaria eradication in the district and organised the villagers for prevention of malaria. SWATI also organised different Skill development training and entrepreneurship development programmes for the Women SHG members in this year.
Year 2007	In this Year SWATI gave importance on livelihood promotion activities in its working area and implemented Orissa Rural Livelihood Programme (JEEVIKA) in the watershed areas of Tikabali block. SWATI joined many state and national level civil society networks and alliances.
Year 2008	SWATI implemented horticulture based livelihood WADI with the support of ITDA, Baliguda covering 375 tribal households in Tikabali block. To support the riot affected villagers in the district SWATI took responsibility for maintaining the relief camps in Tikabali and Phiringia.

<b>Year 2009</b>	To bring peace and harmony among the villagers after the riot SWATI anchored civil society peace initiative in-network with other NGOs and involved in Antaranga programme of administration.
<b>Year 2010</b>	SWATI implemented process to guide panchayat level governance in two-gram panchayats of Tikabali block. Similarly, in collaboration with Odisha Suchana Adhikara Manch, SWATI anchored the initiative on Accountable Governance mounting it on citizen's right to information. SWATI also facilitated the creation of Village level Social Watch Monitors in 125 villages of Tikabali, Phiringia and K.Nuagaon block. During this year SWATI also implemented health programmes like HIV & Aids eradication and village contact drive in the district.
<b>Year 2011</b>	In this Year SWATI initiated many programmes like Diversion based Irrigation for water facility in remote villages, MGNREGA implementation for employment and income security, Malaria eradication for health and PEHECHAN for transgender.
<b>Year 2012</b>	In this year SWATI implemented many programmes for the development of community health, such as Maternal Newborns and Child Health & Nutrition (MNCHN), V4 sub-centre programme, Capacity building programmes of ASHA on interpersonal Communication etc. Similarly to increase SC and ST women farmers productivity and empowerment ensuring secure and resilient livelihoods SWATI initiated Pathways Programme and Gruhini – PREMA for women skill building. SWATI also started a study centre under National Institute of Open Schooling at Bandhagada.
<b>Year 2013</b>	In this Year SWATI started OTELP Extension programme in 48 villages of 6 panchayats in Tumudibandha Block of Kandhamal District. SWATI also facilitated the farmers of Tikabali and Phiringia block for massive plantation of fruit-bearing trees under MGNREGA. SWATI established a Maternity waiting home under NRHM at Balandapada of Phiringia Block.
<b>Year 2014</b>	In this Year SWATI initiated WADI programme with the support of NABARD in Tumudibandha Block. For Energy sustainability of rural villages, A Micro Hydro project was established at village Dangarpadar of Tumudibandha GP with 6 Kilowatt electricity production capacity. In this year SWATI extended its work to Ganjam district to support in Phailin and Cyclone Rehabilitation Programme.
<b>Year 2015</b>	In this year SWATI had actively participated in Swachha Bharat Abhiyan drive in the district. During this year SWATI took the responsibility to facilitate the Focused Area Development Program (FADP) in Phulbani and Baliguda ITDA area of Kandhamal District. In this year SWATI also extended its work to urban poor and started to implement a National Urban Livelihoods mission with State Urban Development Agency in Bhubaneswar, Berhampur, Boudh and Phulbani municipality area.
<b>Year 2016</b>	The organisation started a project named ANANYA for adolescents to change harmful cultural practices of child marriage in K Nuagaon Block and REHNUMA for the minority women in G Udaygiri and Raikia Block to provide legal justice, rights and entitlements. In this year SWATI established another 7 DBI structures in K Nuagaon Block and 8 in Tumudibandha block.

Year 2017	During this year SWATI had implemented many programmes for the integrated development of the rural and poor community, such as Odisha Tribal Empowerment and Livelihood Programme ( OTELP ), Focussed Area Development Programme ( FADP ), Deen Dayal Antyodaya Yojana – National Urban Livelihood Mission ( DAY – NULM ), NABARD WADI, Millet Mission, Diversion based Irrigation ( DBI ) programmes. For improvement of Health and Sanitation SWATI had implemented Maternal child health, Marriage No Child's Play ( MNCP ), Targeted Intervention ( TI ), Maa Gruha and Bike Ambulance, for Women Empowerment and Education National Institute for Open Schooling ( NIOS ), REHNUMA, Panchayati raj and Good Governance and Social Audit etc. This year will be memorable for SWATI as the organisation was awarded the prestigious Shambhavi Puraskar, 2017 for its outstanding contribution towards social change from Bansidhar and Ila Panda Foundation (BIPF).
Year 2018	This Year SWATI implemented some more new projects and extended its services to new areas. SWATI selected as facilitating NGO in Ama Jangala Yojana implemented by Odisha Forest Sector Development Society ( OFSDS ) in Joint Forest Management mode in four FMU under Ghumushar North Forest Division in Ganjam district. Similarly, SWATI implemented Millet mission in Raikia block of Kandhamal district to revive and multiply millet base crops and to strengthen the food security. To create educational opportunity for children from the most marginalised community SWATI implemented "Early childhood Care and Education" (ECEE) project in 122 villages under 14 GPs of Phiringia block of Kandhamal district. In this year SWATI introduced two more programmes like Delivery Van and Bike ambulance, with the support of the National Rural Health Mission to provide health service in remote and inaccessible villages.
Year 2019	This year SWATI has completed its 20 years in the field of social development. Now the Field operation of the Organization is spread across all 12 blocks of Kandhamal District, Bhanjanagar, Jagannath Prasad Block and Berhampur city of Ganjam District, Boudh NAC and Capital City Bhubaneswar. Now SWATI is functioning with 140 regular staffs, above 50 part-time workers, many resource persons and thousands of good wishes. SWATI has formed Village development Committees in 200 villages, 3 farmers produce companies, 10 water users groups, 135 farmers groups, 228 rural women SHGs, 940 urban women SHGs, 40 cluster level federations, 44 Udyana Vikash Samiti, 50 Vana Sanrakhyana Samiti and 339 Adolescent Groups and 57 youth groups in its working area. The Organisation is implementing programmes on all broad sectoral issues of community, such as Natural Resource Management, Livelihood Promotion, Advocacy for the rights of the weaker sections, Gender Justice, Prevention of child marriage and all type of violence against women, Health, Governance, Education and Youth Mobilization for Voluntary Action.



## About SWATI

Social Welfare Agency & Training Institute (SWATI) a non-government, Not-for-profit organization has been serving for the cause of the poor and marginalized for the last Eighteen years. It is registered under SRA, 1860 bearing registration number I.G.R. 21030/169/1999. It is also registered under the foreign Contribution Regulation Act (FCRA), 1976 bearing registration number 105030007/2002, under the 12AA & 80G of IT Act 1961 and under the Employees Provident Funds and Miscellaneous Provisions Act, 1952 bearing registration number OR/BAM/11047/2012 .

### Vision

Healthy and self-reliant community life with dignity ensuring equal opportunity, rights, liberty, justice that enables participation, informed decision-making and creates ability to resolve the issue.

### Mission

Capacitating the weaker section, especially the women and the tribal through skill building, leadership development, micro credit, natural resource management and increasing demand generation of entitlements with a special focus on enhancing opportunity for sustainable livelihoods and self-reliance.

SWATI has undergone growth in terms of expansion of geographical area and programmatic intervention during the last 18 years. Its engagement with the community encompasses broad sectoral interventions such as: Natural Resource Management, Livelihood Promotion, Health, Governance, Education and Youth Mobilization for Voluntary Action. The Field operation of the Organization is spread across all 12 blocks ( Tikabali, Baliguda, Kotagarh, Daringbadi, K. Nuagoan, Phiringia, Phulbani, Tumudibandha, Khajuripada, G.Udaygiri, Chakapada & Raikia ) of Kandhamal District, Bhanjanagar & Jagannath Prasad Block and Berhampur city of Ganjam District, Boudh NAC and Capital City Bhubaneswar of Odisha.

### Thrust Areas

Development of Livelihood resource base through Natural Resource Management

Creation of Support and Sustainable livelihoods opportunities emphasizing optimum use of local resources

Preventive and promotive health services through people's education, creation of community cadres and streamlining of service delivery.

Transparent and Accountable Governance through grassroots mobilization, Rights education, Knowledge and skill building

Formation and nurturing of Community based organizations and their federations.

Promotion of the Culture of "Unity in Diversity" through Youth Mobilization

Protection of Women Right, Protection of Girl Child and Child's right, Prevention of Child marriage through Youth, Girl and Women mobilization.

### Policies of SWATI

- Human Resource Policy
- Financial Policy
- Gender Policy
- Whistle Blowers Policy



## SWATI AS A DEVELOPMENT CATALYST

SWATI is a platform of strong and vibrant group of development activists, experienced and dedicated workers, professionals and intellectuals. The ratio of women workers are nearly 50%, where as above 70% workers are from the district and working area. SWATI always emphasizes to develop the skills and capacity of the worker through training, workshop and exposures.

SWATI's field operations are organized under different projects in their respective areas of implementation. It has four broad wings i.e Programme, Administration, Accounts and Planning, Monitoring and Evaluation.

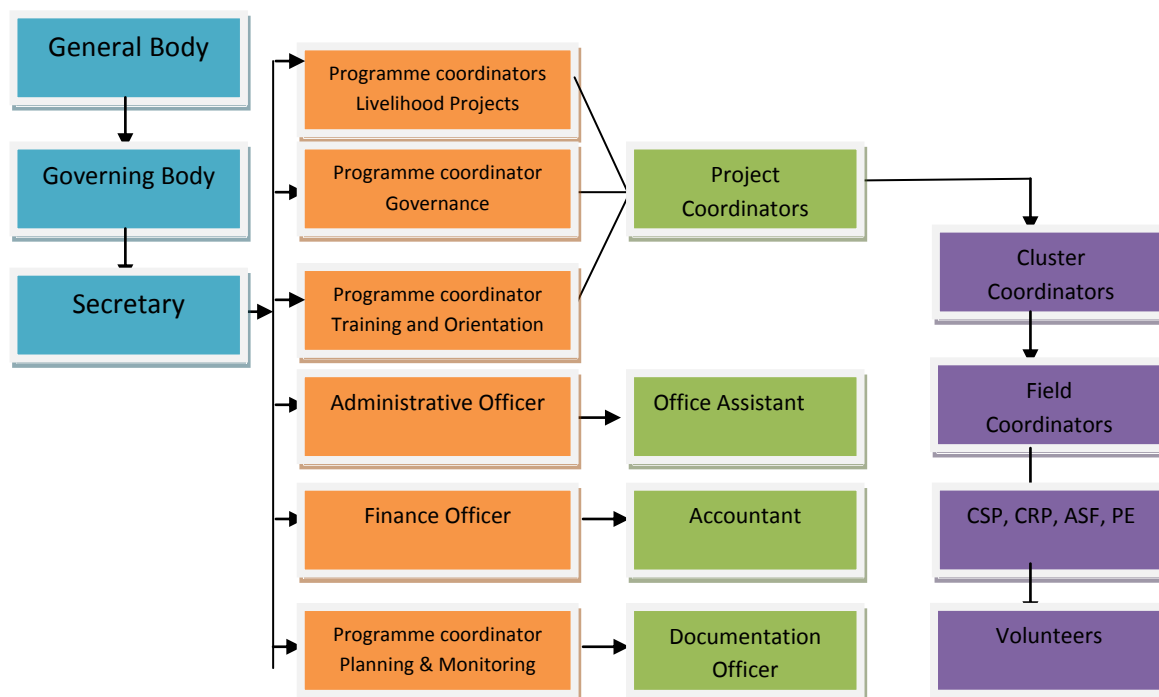
The Secretary is supported by Programme Coordinators, Finance Officer and Administrative Officer. Programme Coordinators are supported by Field Coordinators and Cluster Coordinators. Governing Body of the Organisation has Development Professionals and Activists with representation from different social groups. Meeting of the Governing Body is held twice in a year. Governing Body takes Policy decision and deliberates on strategy Issues.

### Legal Identity of SWATI

- Registration number I.G.R. 21030/169/1999.
- FCRA-1976 registration number 105030007/2002
- Registered under the 12AA & 80G of IT Act 1961
- Registered under the EPF and Miscellaneous Provisions Act-1952 bearing registration number OR/BAM/11047/2012



## Organisational Structure of SWATI



## Major Programmes of SWATI



### Livelihood and Natural Resource Management

- Odisha Tribal Empowerment and Livelihood Programme ( OTELP ),
- Odisha Forestry Sector Development Programme ( OFSDP )
- Focussed Area Development Programme ( FADP )
- Deen Dayal Antyodaya Yojana – National Urban Livelihood Mission ( DAY – NULM )
- NABARD WADI, Millet Mission
- Diversion based Irrigation ( DBI )



### Health and Sanitation

- Marriage No Child's Play ( MNCP )
- Targeted Intervention ( TI )
- Maa Gruha
- Bike Ambulance and Delevery Vam



### Women Empowerment and Education

- National Institute for Open Schooling ( NIOS )
- Early childhood Care and Education (ECCE)
- Marriage No Child's Play ( MNCP )
- Women SHG and Entrepreneurship



### Panchayatiraj and Good Governance

- Social Audit
- Formation and Strengthening of CBOs
- Advocacy and Right based Activities
- Awareness and Social watch monitoring

## Major Achievements of the Year 2018-19

Natural Resource Management and livelihood activities under forestry programme in 25 VSSs of Mujagada FMU in Bhanjanagar block and Extension to 25 VSSs of Jagannath Prasad FMU under OSFDP II.

Early childhood Care and Education (ECEE) activities in 100 Anganawdi centres and 50 primary schools covering 6 ICDS and 122 villages under 14 GPs of Phiringia block.

Formation and nurturing of 100 village level Child protection committee, Sexual Reproductive Health Rights Education to 2500 Adolescents, Life Skill Education to 4000 plus Adolescent boys & Girls, Establishment and function of 3 Nos SRADHA Clinics and Financial Literacy to 217 Girl at Risk under ANANYA project.

Ananya Sisu Surkhya Ratha Campaign on Child Rights, Protection and Child Marriage in 5 Blocks and stopping of 56 child marriage incidents.

Maternity care and residential support provided to 297 pregnant women through Maternity home at Balandapada Of Phiringia Block.

210 families are supported through convergence programme under OTELP programme in Tikabali block and 7688 person days of work created through MGNREGA.

Development of 725 acres WADI of 768 families at Tumudibandha block through tribal Development Fund. SWATI has promoted four Farmers Producers Company for market control by the farmers.

In Targeted Intervention Activities of Female Sex Workers, 1418 RMC, 738 HIV and 505 Syphilis are contacted and got support service.

To reduce the incidents of infant and maternal mother deaths SWATI initiated Promote right for Adolescent & Children on Develop initiative programme (PRACDIP) in the project intervention area of 75 villages of the Phiringia Block of the Kandhamla district.

10nos of Community Drinking Water Project installation completed in K.Nuagaon and Tumudibandha Block and farmers are supported for vegetable cultivation in 100 acres land in 25 DBI villages.

406 farmers have adopted Millet cultivation in 452 hector land in 12 GPs of Raikia block.

SWATI has promoted 940 women SHGs and 40 cluster level federations in 4 urban cities i.e. Bhubaneswar, Brahmapur, Phulbani and Boud and 600 SHGs are supported for entrepreneurship and IGP.

SWATI facilitated in implementation of Focus Area Development programme in all 3 blocks of Phulbani ITDA and 9 blocks of Baliguda ITDA for the livelihood and economic development of Tribals.

To initiate climate change adoption process SWATI has promoted the Stress tolerant Rice Variety (STRV) in 200 hectors land with 357 farmers in Phulbani Block of Kandhamal District.

To ensure the 100% Institutional Delivery for the Pregnant Mothers of Inaccessible area in Phiringia Block of Kandhamal District SWATI has started Delivery Van and Bike Ambulance service.

## LIVELIHOOD and NATURAL RESOURCE MANAGEMENT



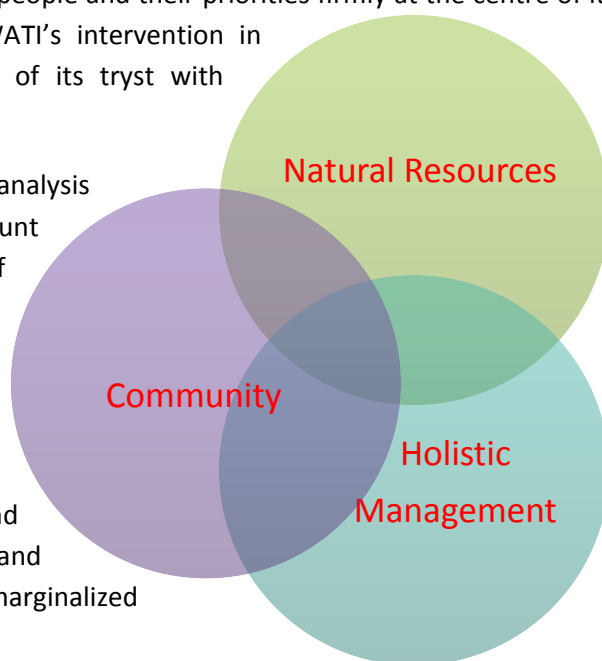
Most of the undernourished and food-insecure people are subsistence tribal farmers living in inaccessible areas who are reliant on natural resources. These poor rural households generally have small landholdings, insecure tenure, little or no financial capital and poor access to markets, infrastructure (e.g. roads, health services) and employment opportunities. These factors mean that for many people, natural resources are their most accessible

source of food, water, energy, shelter and income.

Increasingly, these people's livelihoods, and more specifically their food security and nutritional status, are at risk because the productive capacity of the resource base is declining in both quality and quantity. The resource base no longer provides enough food, clean drinking water or sources of income. A number of factors contribute to processes of resource degradation, including population pressure, deforestation, reduced fallows, overgrazing and climatic stress. The rural poor, especially women and tribal people, are particularly affected because they may be landless and rely on common property resources or may not have secure rights, limiting their access to and control over productive resources.

The Rural Livelihoods are based on holistic management of Natural resources and SWATI has been taken it as an important domain of its intervention. SWATI's Intervention in Natural Resource Management showcases its approach of placing people and their priorities firmly at the centre of its engagement with the partner community. SWATI's intervention in NRM has scripted broadening and deepening of its trust with community development.

Development Activities based on a systematic analysis of poverty and its causes taking into account informed view of opportunities and priorities of the people are the building blocks of SWATI's Livelihoods Programme. Livelihoods Intervention of the organisation encompasses promotion of optimal use of local resources, raising production and productivities of the existing livelihoods portfolios, skill building and handholding support for diversification and encouraging entrepreneurship among the marginalized sections of the community.



## Odisha Tribal Empowerment & Livelihood Program ( OTELP Plus )



### The Project

Odisha Tribal Empowerment & Livelihood Program (OTELP Plus) is being implemented by SWATI since 2013 covering 32 villages in 6 GPs that come under 10 watersheds in Tikabali Block. It is an extended project of State government's OTELP project to new areas, mainly operational through convergence funding of different line departments. The goal of the Project is to enable the poor households to sustainably ensure their livelihoods and food security through promoting a more efficient, equitable, self-managed, optimum use of the natural resources, off-farm/non-farm enterprise development and accessing the rights and entitlements entrenched in it. The objectives of the Project are; to Built the capacity of the marginal groups, to ensure the access of the poor tribal people to natural resources and increase its productivity, to encourage and facilitate off-farm enterprises and to ensure basic entitlements of tribal households.

The major activities of this programme are: Preparing Village development plans, facilitating the VDCs to implement different developmental activities in village level in convergence with government departments, Mobilizing the Community for accessing rights and entitlements, Building the capacity of SHGs, Farmers groups, Village Development Committees and other grassroots institutions, Facilitating off-farm enterprise for income and employment generation, Developing the skill and leadership of Community Service provider

and Monitoring the basic food entitlements of tribal households and ensuring their access to public food supplies

### Achievements of this year

During this Year SWATI has developed 14 hectors Plantation of Fruit bearing trees and hill broom in Boriguda, Barasahi, Penabida, Penagobarii and Tudubali village and created 5964 person days of work through MGNREGA. Similarly SWATI has mobilised MGNREGA fund for second year maintenance of 40 Acres mango plantation in Pipalasahi, Bariguda, Sapaganda, and Kutiguda villages and created 1514 person days employment.

### Agriculture and Irrigation

SWATI has mobilised 10.3 lakh rupees MGNREGA fund for 5 Dug wells and 2 Ring wells in Boriguda, Barasahi, Kutiguda, Padangi, Gutingia, Birangi and Dorapida villages for irrigation and created 1161 days of employment. 20 farmers are getting benefit from this.

75 farmers of 11 villages are facilitated to raise onion crop in 5.5 hector land through Rastriya Krushi Vikash Yojana.

30 farmers of 5 villages are supported for Radish farming in 2.5 hector land through RKVY.

12 farmers of 4 villages are supported for Brocoli farming in 4 hector land.

33 Farmers of 5 villages are supported for Mustard cultivation in 2.5 hector land through RKVY

38 farmers of 5 villages are supported for Paddy, millet and Maize cultivation in 8 hectors land through RKVY.

Agriculture Department has provided seeds and implements to the farmers. Improved variety of Maize, millet and oilseeds, Implements like Weeder, thresher and hand winnower support have been secured from the department. HDPY Vermin bed have been mobilized from horticulture department. ITDA has provided

support for Mango and Hill broom plantation, Onion and Mustard Cultivation for agricultural development, Construction of DBI, KB pumps and Honda Pumps for irrigation, Bore well and Sanitary well, Drying Yard and Broiler Unit in the project area.

### Development of Community based Organisations

31 Village Development Committees are 58 women SHGs are strengthened. SWATI has facilitated the SHGs for Bank linkage and IGP activities. Now Eight SHGs are doing poultry

farming, 6 SHGs are doing grocery shop and others are engaged in different pretty business. SWATI has also formed 10 SHG federations and oriented them on leadership, federation management, accounts keeping and women's rights. Now the federation members are leading anti-liquor campaign, child marriage prevention and violence against women in the area. They are also guiding women and child health programmes and child education programme in respective villages.

### Plantation and Fruit bearing Orchard Development

Activities	Village	Area in Ha	Targets	Achievements	Persondays
Mango Plantation	Barasahi	2	7.35	2.35	1291
Mango Plantation	Tudubali	3	8.25	3.25	1785
Cashew Plantation	Penagobari	3	8.25	1.25	686
Cashew Plantation	Penabida	2	4.16	1.20	659
Hill Broom Plantation	Barasahi	2	2.928	1.45	796
Hill Broom Plantation	Boriguda	2	2.928	1.36	747

### Impacts

Convergence among the departments has provided the anchorage to implementation of the programme and Many Developmental issues are resolved through convergence. The villagers are supported with dry yards, Compost pits, solar based drinking water facilities, toilets, godown/packing house etc.

The irrigation facilities, land development activities and agriculture development programme has increased the crop production, vegetable cultivation and given more income and employment to the farmers. It has also developed the food security and nutrition security in villages.

Mobilisation of MGNREGA funds have created both employment and agricultural infrastructural development and checked seasonal migration.

The Capacity building activities of SWATI have improved the confidence level of the village leaders and members of CBOs to access and implement the government programmes. The SHG activity has empowered the women both economically and socially and increased their participation in village and panchayat level meetings and plannings.

## Odisha Forest Sector Development Project ( Ama Jangala Yojana)

### The Project

Ama Jangala Yojana is a flagship programme of Government of Odisha being implementing by Odisha Forest Sector Development Society (OFSDS) in Joint Forest Management mode covering 700 VSS and Eco development Committees spread over 30 forest and wildlife divisions.

The AJY scheme aims to achieve sustainable forest management in the project area through forest restoration initiatives along with providing income generating and livelihood opportunities to the forest dependent communities, so that the pressure on adjoining forest is relieved/reduced. The main objectives of AJY Scheme are – To conserve and restore degraded forests through forest restoration initiatives, To arrest further degradation of forests through participatory forest conservation and management strategy, To empower forest dependent communities by building their capacity to participate in the sustainable forest management and to improve the livelihood opportunities of the forest dependent communities so as to reduce their dependence on forests.



SWATI has been selected to implement this programme with 100 VSS in 4 FMUs coming under the Ghumushar North DMU and during this year it has started implementing with two FMU Mujagada and Jagannath Prasad under Ghumushar North Forest Division in Ganjam district.

### Achievements of this year

In Mujagada FMU SWATI has organized orientation camps for VSS members regarding OFSDP-II, completed the registration process of 25 VSS, Completed Survey, demarcation with permanent pillar posting of assigned area 3333.99 ha.



Preparation of Micro-plans in all 25 VSS through participatory method and appropriate tools comprising the status of the forest, villagers dependency on forest, forest protection and generation practices, livelihood and employment issues of the villagers, problems and solution possibilities and action plan for livelihood, employment, health and educational development of the village.

SWATI has initiated livelihood development activities like, New SHGs formation of Left out House holds, Financial Linkage with OLM, ICDS, NABARD & Banks, Leaf Plates making assistance for value addition Price, Back yard poultry support to Land Less Families, Vegetable seeds support to Progressive Farmers through Line Dept.

Capacity Building training to farmers on improved vegetable cultivation and integrated pest management through Dept. of Agriculture & DDU-GKY

In association with forest department and VSSs SWATI has assisted in forest development activities like Gap plantation, Fuel and fodder plantation, NTFP tree plantation, Drainage line treatment, Fire line construction, Consolidation & Demarcation of Forest boundary in joint forest management mode.



SWATI has started its initial entry point activities with 25 VSS of Jagannath Prasad forest management Unit. It has started reformation and strengthening of VSSs and SHGs through regular meeting, orientation and exposure.

SWATI in association with forest officials, VSS members and villagers has initiated Survey & Demarcation, Fire protection awareness to FMU Coordinators and VSS members and awareness campaigns for forest protection.

### Impact

This initiative has organised the community to protect the natural forest through Joint Forest Management process and encouraged the villagers to strengthen their forest based livelihood through proper management and protection of forest.

The convergence activities for forest development have provided employment and income to the villagers. The financial arrangement and income generation initiatives have empowered the women groups.

## Millet Mission

### The Project

To revive and multiply millet base crops and to strengthen the food security and nutrition security of tribal and highland area people SWATI is implementing Millet crop development programme by support of Government of Odisha Millet mission Project. The main objective of this programme is to Increase household consumption of millets by about 25% to enhance household nutrition security, to promote millet processing enterprises at Gram Panchayats and Block Level, to improve productivity of millets crops and make them profitability and to develop millets enterprises and establishing market linkages to urban/rural markets with focus on women entrepreneurs.

SWATI is implementing this programme in 12 grampanchayats of Raikia block in Kandhamal district.

### Achievements of this Year

406 farmers are supported for rainy and winter season finger millet cultivation in 400 acres land. Farmers are supported Rupees 634910.00 as incentive under the project.

The farmers are provided high yielding seeds with other agricultural inputs and oriented for systematic Millet Intensification (SMI)



techniques, Bio fertilizer preparation and improved farming process.

SWATI has organized agricultural camps, orientation and training camps to motivate the farmers on revival of millet farming. 20nos of farmers are taken exposure to Vijayanagaram area of Andhra Pradesh to learn and experience different techniques of entrepreneurship skills, value addition using Millet as raw material.

All the Millet farmers have produced 30 percent more crops in SMI farming system related to their traditional farming practice and more farmers are interested to cultivate this crop in coming season.



SWATI has organized community level food festivals on different millet based foods and created sensitization on its nutrition value among the villagers.

### Impact

This process has encouraged the farmers to revive the millet based crops on their field and many farmers are interested to cultivate it in coming season.

The SMI method of millet cultivation has attracted the farmers and they have realized the increased quality and quantity of the crops through this method and also calculated the margin of benefits.

The revival of millet crops has brought returns the nutrition varieties in their food recipes and created encouragement among the women.

This process has also revived the traditional mixed cropping practice among the farmers. They have cultivated it with other traditional crops and got crop protection through this practice.

## NABARD WADI

### The Project

This WADI model is a holistic approach addressing the food security, income security, land water management and increase in production. This programme also includes other components like Water Resource management, Soil and water conservation, Drudgery reduction of women, Sustainable Agricultural Practice, Improved Agriculture, Cooperative Marketing and Integration of Landless.

SWATI has been implementing Orchard based Livelihood Programme WADI with the support of NABARD in Kutia Kandha villages of Belaghar, Bilamal and Gumma panchayats since 2014-15. The main objective of this programme is to give Livelihood and Income security of Poor tribal families from fruit bearing Orchard WADI. With this objective the programme also aimed to improve the standard of living of the families, developing unutilized and sloping lands into productive asset, integrating trees and other perennials into the farming system, Emphasis on sustainable farming practice, combining livelihood activities having different gestation period and improving the food and nutrition security through intercropping.



Under this programme SWATI has promoted 725.5 Acres of fruit orchard of 789 farmers covering 42 villages of 3 Grampanchayats. The tribal families having land holding less than five acres are selected as beneficiary and each family are given support for maximum one acre WADI development. SWATI has given support for land development, pit digging, Fruit and border plant saplings, fertilizer and pesticide and field management. SWATI has been also given training to the farmers on pest management, water management, mulching, Compost and bio fertilizer preparation, intercropping etc. The Organisation has provided irrigation facility to WADI fields and supported seeds and agricultural implements for intercropping. SWATI has arranged Wire mesh fencing support in convergence with different Govt departments. 42 Udyana Vikash Samitis are

formed in WADI villages to strengthen inter relationship among the farmers. SWATI has also formed a Farmers Producers Company named Surgabhata Producers Company covering 400 WADI farmers for collective marketing of WADI products. 70 SHGs, 78 JLGs and 30 farmers club are formed in WADI villages.

### Achievement of the year

During this year 16nos of Backyard poultry houses are constructed and 1200nos of Chicken Chicks distributed among 12 Landless Beneficiaries.

The Organisation has given support to Wadi farmers for 36nos of Varmi Compost Pit construction and intercropping in 200 acre Wadi plot.

Cleaning and mulching activities have completed in 520 acres of WADI field and Geo Tagging of 600 acres WADI and 68nos of Landless Family has been successfully completed in 3 phases by NABCONS team.

The farmers are provided agricultural support through convergence for agricultural development. Kutia Kandha Development Agency has supported 10 quintals of Turmeric and 3 quintals of Ginger seed in 8 WADI Villages, 30qtls of Potato seeds to 12 farmers of WADI Village and 2.3 quintal of Niger seeds to 430 WADI Farmers. District Agriculture Department has supported 4.8 quintal of Black Gram seeds to 120 nos of Farmers of Tumudibandha Block and 40kgs of Arhar seed to 20 nos of WADI Farmers

Renovation of two Cannels through convergence of Block Department under MGNREGES

The farmers are supported for Vegetable intercropping in WADI patches and they are

producing Cabbage, Cauliflower, Tomato, Brinjal & Green Chili and Oil seeds like Sunflower, Mustard and Til etc. Ten farmers are supported for vermin compost preparation.

Farmers are supported for Minor Millet cultivation like, Maize, finger millet, Fox tail Millet, Little millet and Perl millet and Tissue Culture Banana plantation in their WADI fields.

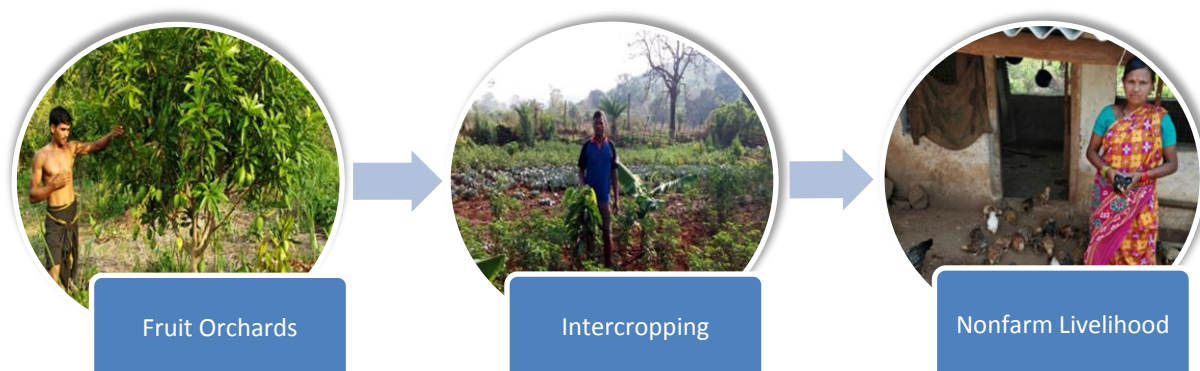
The women SHGs are given capacity building trainings on group dynamic, leadership, Bank linkage, thrift and credit and different income generation activities. they are supported for poultry farming, agribusiness and vegetable farming.

### Impact of the Project

WADI has given a sustainable livelihood opportunity to the poor tribal families those were mostly dependant on shifting cultivation for their livelihood. Now these families have engaged in intercropping and vegetable production and increased their earning and food security.

This initiative has minimised the dependency on sifting cultivation and checked the migration. It has also provided work and employment through intercropping and vegetable cultivation.

The intercropping Practice has revived the mix cropping practice and crop diversity in farmer's field. Cultivation of Millet crops, root varieties, oil seeds and leaf vegetables in the WADI field have given equal taste and variety of Crops from sifting cultivation. It has also motivated the farmers for improved and seasonal vegetable cultivation and has given comfortable earning according to market demand.



The Farmers are organized and farmers to Farmers interaction and knowledge exchange processes have revived. The women farmers are organized in groups and accessed banking facility for income generation activities. Formation of Farmers Producers Company has given strength and marketing confidence among the farmers.

Now other departments like horticulture, KKDA and forest department are also following the success of WADI and promoting more plantation fields in the area.

### Farmers Producer Company Ltd

SWATI has promoted four Farmers Producer Organisations (FPO) of WADI and other farmers to create an enabling policy environment for investment in Farmers Producer Organisations and to leverage their Collective Marketing Power. In WADI area the FPO named Surgabhata Farmers Producer Company Ltd is registered in Company act and the registration no is U01403OR2016PTC020037. Till now 518 members including 146 women farmers of 30 villages of five GPs are enlisted in it and a ten member's executive body is also formed. 600 Share Holders are enrolled in FPO and Rs 120, 000/- share capital has collected.



This year the FPO has marketed 20 quintals pulses, 10 Quintals oil seeds, 25 Quintals of millets and 30 quintals of Mango. It has also established one Rice processing and one Millet processing unit at Belaghar and a pack house with the support of ITDA.

Similarly SWATI has promoted another three Farmers Producers Companies (FPO) in the district with the support from NABARD. Urnati Farmers Producer Company Ltd. at G.Udayagiri, Udyagi Farmers Producer Company Ltd. at Gutingia and Hatisala Farmers Producer Company Ltd. at K.Nuagaon. All these FPOs have got registered and engaged in Collection & Sale of Agriculture, Horticulture and Minor Forest Products.

## Diversion Based Irrigation (DBI)

### The Project

Diversion Based Irrigation has the objective to meet the water needs of the people through utilization of available resources adopting structural measures and community participation. It is a low cost technique to supply water from distant stream to remote villages through pipe for irrigation and drinking water. This technique needs no electricity or fuel to supply water and is easily managed by the community. The major activities of this programme are community mobilization for labour participation, infrastructure creation, command area development and agricultural support.



SWATI had established 15 DBI structures in Phiringia, K.Nuagaon and Tumudibandha Block in the 1<sup>st</sup> phase and in 2<sup>nd</sup> phase with the support from SDTT and NABARD. In the year

2017-18 it has established another 10 structures in K Nuagaon Block and Tumudibandha block.

### Achievements of this Year



SWATI has installed 10nos of Community Drinking Water Projects in K.Nuagaon and Tumudibandha Block

400 farmers are supported vegetable seeds like ladies finger, bitter gourd, Black Gourd, Chilly, Beans and Snake Gourd in K. Nuagaon and Tumudibandha Block under SDDT Nabard Project.

120 Farmers of Tumudibandha Block are supported 4.8 quintal of Black Gram seeds, 430 farmers are 2.3 quintal of Niger seeds and 20 farmers are supported 40kgs of Arhar seeds in Convergence with Agriculture Department.

100 nos of farmers are covered with Crop Insurance.

Supports given for 60 acres Vegetable Cultivation in Two Block (Tumudandha and K.Nuagaon) during the Summer.

60 farmers of 5 villages are supported for improved paddy cultivation in line sowing method in 20 acres land in convergence with Agriculture Department.

In convergence with Agriculture Department 35 farmers are supported for sunflower cultivation in 10 acres of land and 1 acre Banana Cultivation in Tumudibandha Block.

To increase the farmers income and food security SWATI has developed a 0.5 acre farm model in 10 DBI villages. Farmers are supported 3600 nos. of Tissue Culture Banana, vegetable seeds and technical support for this.

SWATI has organized training and exposures for farmers on organic farming, organic manure and pesticides preparation, pest and disease management, seed preservation and marketing.

### Impacts of this project

Total 962 households of 25 villages in Tumudibandha and K.Nuagaon Block are getting 24 hour water supply for drinking purpose and total 625 acres Kharif crop and 246 acres land getting irrigation facility for rabi crop. It has a great impact as the villagers are getting water for their daily need and agriculture without any price and expenditure on electricity or fuel. The drudgery of collecting drinking water has been reduced for women. Now, women do not have to go far-off places to collect water which saves their energy and time.

The Farmers of Pakur, Kuabadi, Bandakinala and Udayagiri have marketed 430 quintals of Banana and 250 quintals of vegetables.

The drinking water projects are providing 24 hour safe drinking water to the villagers.

DBI irrigation facility has encouraged the farmers to cultivate vegetables and other food crops throughout the year. The Crop diversity of these villages is revived and villagers are adopting more vegetable, pulse and millet crops.

This facility has protected crops from drought and more fallow lands have been put under cultivation.



The household food and nutrition security has shown significant improvement witnessed in diversification of the food basket and dietary intake of nutritious food especially by women and children.

Availability of water has improved the health and sanitation of the families. The DBI water supply has encouraged the villagers for constructing and using latrine.

The increased availability of water for cooking, washing and bathing has improved the quality of their life. Now they are liberated from the back breaking workload and find more time for themselves and for taking care of their children.

### Stress tolerant Rice Variety (STRV) promotion Programme

#### The Project

To increase the production of rice and to initiate climate resilient agriculture in drought prone areas, SWATI is implementing Stress tolerant Rice Variety (STRV) promotion Programme in Kandhamal district. The main objectives of this programme are, adoption of STRV by the farmers, Farmers Knowledge development on quality seed production, Farmers skill development on scientific agricultural practice and inclusion of different stakeholders like farmers group, SHGs and user groups and different resource groups like government agricultural officials, agriculture experts in this process. SWATI is implementing this programme in 200 acres land of 357 farmers in 4 GPs of Kandhamal district with the support from International Rice Research Institution (IRRI).

#### Achievements of this Year

154 farmers are supported 2140 K.G. STRV Sahabhagi Dhana to cultivate in 108.19 Acer, 114 farmers are supported 1830 K.G. STRV DRR-44 to cultivate in 98.45 Acers and 89 farmers are supported 1270 K.G. STRV BINA-11 to cultivate in 71.48 Acers land.

Organising the farmers on process of H2H & Cluster demonstration initiation, Orientation on of seedling and planting process, fertilizers and weeding process, Training to farmers & SHG members on quality seed production (QSP), Involvement of Local Krushaka Sathi for better implementation of the Process, Crop cutting and measuring the yield quantity.

#### Impacts of this project

An average productivity increased by 30%

The incremental income of targeted farmers from existing land resources and inputs enable them to manage their family expenses in a much better way.

The interest on use of HYV paddy seed seems enhanced among the rural farmers as well as the farmers of adjourn villages

Knowledge on quality seed selection, collection & storage, crop protection, water conservation measures seems enhanced among target beneficiaries.



## Deendayal Antyodaya Yojana-National Urban Livelihood Mission (DAY-NULM)



### The Project

Ministry of Housing & Urban Poverty Alleviation, Government of India is implementing the Programme Social Mobilisation and Institution Development (SM & ID) for the urban poor through Deendayal Antyodaya Yojana-National Urban Livelihood Mission (DAY-NULM). This Programme is aimed at mobilisation of urban poor households to form their own institutions is an important investment for an effective and sustainable poverty reduction programme.

The Main objective of this project is to reduce poverty and vulnerability of the urban poor households by enabling them to access gainful self-employment and skilled wage employment opportunities, resulting in an appreciable improvement in their livelihoods on a sustainable basis, through building strong grassroots level institutions of the poor. It envisages mobilisation of urban poor households into a three tiered structure with Self-Help Groups (SHGs) at the grass-root level, Area Level Federations (ALFs) at the slum / ward level and City-level Federations (CLFs) at the city-level. The urban poor family members are organised to form the groups, trained and oriented for SHG management, Savings, financial inclusion, IGP planning, Skill development, Group and personal income generation programmes.

SWATI has been implementing National Urban Livelihood Mission with State Urban Development Agency in 16 wards consisting of

112 slums and 47622 households of Bhubaneswar Municipal Corporation, 10 wards of Berhampur Municipal Corporation, 17 wards of Boudh NAC and 13 wards of Phulbani NAC with a Tri-Party Agreement (State Urban Development Agency, Bhubaneswar Municipal Corporation and SWATI) since 2016.

### Achievements of this Year

SWATI has promoted 577 WSHGs at Bhubaneswar, 149 at Berhampur, 89 at Phulabani and 125 at Bouda municipal area to strengthen the livelihoods of urban poor through thrift and credit. It has organised and oriented them on Book keeping, thrift and Credit, Bank linkage, IGP planning and income generation activities. Organization has provided revolving funds to 530 SHGs and arranged group loan for 55 SHGs for different income generation activities. The organisation also formed 55 Ward level and 40 Cluster Level Federations of SHGs .

Total 126 SHGs of 58 ALFs have started different Income generation activities like Tailoring, Dry food business, Saree, Readymade garment, Grocery shop, Phynaile making, Snacks making, Mudhi Mixture, Agarabati making, Spices and Masala Business, ladies corner, boutique, Napkin Business, Badi, pampad and pickles, decorative plastic flowers and road side vending.



SWATI has organized the SHGs to take part in different social service activities like colony sanitation, mother and child care, Police public interface and other welfare activities in colony. The SHGs are also observing national and

international days like Independence Day, Republic Day, Women Day, Labour Day.



The women groups are organized to take participation in different awareness and social mobilisation works like anti liquor campaign, maintaining peace in slums and resolving family disputes, ward level sanitation etc. The Women federations of Bhubaneswar Municipal Corporation have started campaign against liquor in the city.

SWATI has organized conventions of Women SHGs and discussed issues related to violence against women, women atrocities, health, education, sanitation, drinking water, power supply, women right and women atrocity.

The groups are organized to place the issues of their own slums in different government offices and municipal corporation offices.

### Impact of this Project

This Programme has enabled the poor women to form groups, create group funds, internal money lending, accounts keeping, IGP planning and cooperative business. It has educated them on financial inclusion process, Banking system, Loan process of financial institutions, small business and enterprise development, Market study and marketing of home made products.



The revolving fund support has enabled the group members to take different IGP activities and increased the income of group members and also the group funds.

This Programme has created a great impact in Socio economic and political life of poor households in the city. Though the programme is mainly concentrated on women it has empowered them financially and socially. They are getting more courage and confidence from group activities and capable to choose different livelihood options.

The orientation process of the programme has enabled the SHG members to build relationship with Banks, Government Offices, Business organizations, administrators and people's representatives.

- 940 women SHGs
- 40 cluster level federations
- 600 SHGs in entrepreneurship

Above 90% of group members have opened their personal saving account and enrolled in different financial policies and insurance policies.

The Process of building federation of women SHGs has created a platform to share their issues and enhanced their decision taking ability. The federations are also growing as a pressure group to access the government provisions.

This economic empowerment process has strengthened the decision making ability of women in the family, position of the women in family and community and their access and control of rights and provisions.



## Focused Area Development Program (FADP)

### The Project

The initiative is anchored on convergence with ITDA to plan & support livelihood enhancement projects by converging with various National & State programmes and external donors. The main objective of this programme is Economic development of ST families through implementation of various livelihood enhancement projects with "Individual family/Group of families" as the target group. SWATI is implementing Focused Area Development Program (FADP) in 889 villages of 48 Gram panchayats in 3 Blocks of Phulbani ITDA Area covering 2017.61 square kilometre and 1,74,846 population, out of which the tribal population is 96,610. Similarly in 9 Blocks of Baliguda ITDA Area covering 6511.54 square kilometre and 4,50,277 population, out of which the tribal population is 2,45,210.

Focused Area Development Program (FADP) has four major activities such as; Improved Agriculture, Horticulture, Animal Husbandry and Skill development of Tribal Youth. SWATI; being a partner NGO working in association with ITDA, facilitating community mobilisation, programme arrangement, survey, identification & selection of beneficiaries for different activities, PRA, planning, participate in implementation process, post follow-up of implemented activities, handholding support to beneficiaries etc. SWATI has been also facilitating in formation & promotion of CBOs with special emphasis on WSHGs along-with their involvement in various locally feasible income generating activities for socio-economic empowerment. The Organisation has been organising Awareness building on different govt. Schemes/ programmes, supply of safe drinking

water to all families, literacy promotion, community health development, Natural Resource Management, employment/ self-employment generation for unemployed masses, capacity building of different groups on their working area concern, lobby & advocacy for food security & social security are the activities under taken by this institution along-with ITDA's planned activities.

### Achievement of the Year

Different activities like Plantation, Promotion of livelihood activities through SHGs, Agricultural developmental activities, Poultry development, Fishery Development, Bee Keeping, Skill development training and Placement Linkage are implemented through Phulbani and Baliguda ITDA for the sustainable economic development of the villagers.

During this year supports given for 50 Acres Horticulture Plantation and Maintenance, 93.5 Acres Wadi Plantation & Maintenance, 10 Acres Vegetable Cultivation, 37 Units Poultry and 100 units Pisciculture Promotion & Bee Keeping through Phulbani ITDA. 50 persons have taken Driving Training through Upasana Educational Trust. Similarly supports given for Sweet Corn & Cow Pea farming, Backyard Poultry, Bee keeping, Driving training and Dying Yard construction to Karandagada Model village of Phiringia Block under Mission 150.

Through Baliguda ITDA 533 farmers are supported 446.5 quintal of potato seeds for cultivation in 74 acres land, 300 farmers for maize cultivation, 122 farmers for sweet corn,



224 for mustard and 990 farmers for vegetable cultivation.

Supports given for promotion of horticultural plantation in 54.6 hector of land in 8 blocks of ITDA area.

During this year 124 ST unemployed youths are sponsored in Placement linked employability training (PLET) and 42 ST unemployed youths are in Skill Development Training (SDT) course.

The farmers are encouraged for improved agricultural practice and trained on HYV seeds/seedlings, line sowing, SRI cultivation, cropping seasonality, fertilisation, introduce of improved implements, seed purgation, techniques of ground water recharge etc.

### Impact of this Project

The Plantation activities has provided a sustainable income source to the families, increased the fruit production in the area, encouraged the farmers for farm based cultivation and market based production and also created a green belt in villages.

The agriculture developmental activities have increased agricultural and Horticultural production, given employment and income opportunity for farmers and also provided food and nutrition security to the families.

The Women self-help groups have increased their income through different income generation activities and it has empowered them economically and socially.

## MGNREGA provided a sustainable income source to Nilambar



Fifty years old Nilambar, a tribal farmer of Bariguda village in Tikabli block lives with wife, two sons and two daughters, depends on agriculture and forest for livelihood. Though he has 10 acres of land, he only cultivates 5 acres and the rest five acres land remains fallow and used for grazing of cattle. due to lack of irrigation facility. But now with the help of SWATI he has achieved to convert his fallow lands in to productive.

In 2017 Nilambar placed his problem in a village meeting related to MGNREGA and appealed to support him for development of his fallow lands. The workers of SWATI suggested him to develop a plantation based orchard, so that the land will be productive within 2/3 years. Nilambar agreed with that proposal and SWATI supported him to get plantation assistance through MGNREGA. In the year 2017-18 he developed his five acres land utilizing 7 lakh 9 thousand 824 rupees MGNREGA fund and planted 800 Amrapalli variety mango plants. He took all the care including fencing, composting, irrigation, plant care, fertilizer and pesticide application and all his family members get employment for one year in labour work.

When the land was covered with plants and strong fencing Nilambar decided for vegetable intercropping on that field. He lifted water from nearest spring and cultivated cabbage, curliflower, radish, tamato, brinjal and other winter vegetables on 2 acres of his land. It gave him above fifty thousand rupees additional income. Now he is planning for all time seasonal vegetable farming on that field.

Due to his proper plant care, irrigation and composting, now the mango plants of the orchard have grown healthy and there is not a single plant loss in his field. Nilambar hopes that this field will be turn in to a big orchard in next few years and will provide sustainable income. He has a plan to develop this field in to an agricultural farm and to produce vegetables and millets with fruits.. Now this field is giving not only engagement but also income and food security to his family members.

## Papaya Plantation Gives Income Security to Simadri's Family

The income generation support for farm based livelihoods through Focused Area Development Programme of ITDA, Baliguda has given employment opportunity and income security to Simadri's poor family and has also given strength to plan for long term economic development of his family.



Simadri, the 70 years old Kandha old man lives with his big family consisting 15 members in village Darapida under Gutingia

GP of Kandhamal district. The family depends on agriculture, NTFP collection and wage labour for their survival. But lack of income opportunity from these entire sources, the family always faces lots of troubles for maintenance. They cannot get good agricultural production from their high and dry land due to lack of infrastructural development and half of their land was always remained fallow. Due to Lack of wage opportunity in surrounding villages his sons were always thinking to migrate out states for searching of work. Simadri suggested them to develop the fallow lands for sustainable income and when they did not listen Simadri himself came forward in his old age to show them the way.

He has three acres land near Paburia-Gutingia road which was remained fallow since years. He started to develop the land, cleaned the bushes, plugged the gullies and constructed bounds in the field. Observing his initiatives SWATI arranged plantation support through MGNREGS programme for him. The Horticulture department assisted him a shade net and a pack house for horticulture development. ITDA also supported him a dug well to irrigate the land. All these assistance boosted his confidence and he started to develop the land as an agricultural farm. This process motivated the sons to cooperate with him and to earn their livelihood from that land.

In the year 2017, SWATI motivated him for Papaya intercropping in his mango plantation area. At first he was reluctant to adopt this crop because of marketing difficulties but when workers of SWATI assured him for marketing arrangement he agreed. SWATI facilitated him for Papeya plantation under FADP, SCA to TSP scheme. He got 31.800 Rupees fund support to grow Papaya in his 1.5 acre land.

He has planted 600 Papaya plants and now it is second year of his plantation. All the plants are in fruit bearing stage and he expects to harvest above 50 quintal Papeya this year. Now a day's Papaya has big market demand and he could earn above seventy thousand rupees from this – says Simadri. This plantation will give 2/3 year production and he could earn above 1.5 lakh rupees from that.

## Gender Mainstreaming and Education

Gender role development is one of the most important areas of Community development. "Gender" refers not to male and female, but to masculine and feminine - that is, to qualities or characteristics that society attribute to each sex. Gender and community development is a process towards sustainable way of community development incorporating all the gender with equal participation and involvement. If there is no equal say/ participation of both male and female it is not a sustainable development.

Gender Mainstreaming and Education are two major focussed area of SWATI's Intervention. SWATI addresses both practical and strategic gender needs in its community development initiatives making it a cross-cutting issue across all the programmatic interventions of the Organisation. Issues and concerns of the women are factored into all the sectoral interventions through a concerted effort to enhancing women's participation. Livelihood programme of the Organisation has specific focus on promotion of women livelihoods. NRM interventions have been spearheaded by community organisation with maximum representation of Women. Health Programme of the Organisation has unambiguous focus on addressing the unmet health needs of the women. SWATI has genderised its personnel policy, formulated workplace policy and formed Committee against sexual harassment. Women component analysis has been integrated into all the tools and techniques of the planning, monitoring and evaluation devised by the organisation.

Similarly SWATI has been given priority for education of the community to strengthen their knowledge base and their informed decision making ability. SWATI has opened educational institutions to give the chance of higher study to the dropout students, arranged regular trainings and orientations for skill development, facilitated the youth for technical and skill based trainings and implemented awareness programmes to educate the community people on different government schemes, citizen rights and responsibilities. The Organisation has opened information centres and developed IEC materials such as leaflets, posters, handbooks and wall paintings for public education and dissemination of messages.



## ANANYA – Marriage: No Child's Play



### The Project

SWATI is implementing this project ANANYA for prevention of child marriage in Kandhamal district. The main objective of this project is to change harmful cultural practices that normalize child marriage whilst providing girls with SRH knowledge and access to the services they need to make informed health decisions. Young people are able to decide if and when to marry and pursue their SRHR in a supportive environment.

Child marriage is a violation of child rights, and has a negative impact on physical growth, health, mental and emotional development, and education opportunities. It also affects society as a whole since child marriage reinforces a cycle of poverty and perpetuates gender discrimination, illiteracy and malnutrition as well as high infant and maternal mortality rates.. The prevalence of the practice is wider in the tribal populated backward districts of the state. Kandhamal district is one among those districts where this practice prevails traditionally among the tribal and rural villagers. Acute poverty, Lack of education, awareness, skill based education opportunity and strong belief on tradition has forced the villagers to follow this illegal practices.

SWATI in association with Save the Children is implementing ANANYA Project in 11 Gram panchayats of K. Nuagaon Block of Kandhamal District since 2016.

The major activities of the programme are to provide girls and their communities with the tools and knowledge to stop early and forced marriages and give girls a better start in life. Providing alternatives to child marriage and mitigating the impact on married girls. Enhancing access to income generating opportunities for girls and their families,



providing financial literacy training for girls to increase their ability and power in financial decision-making, Enhancing access to improved Child protection systems for girls at risk of child marriage and already married girls so that preventive and response measures can be taken, Increasing access to quality youth-friendly SRHR services (that are available, affordable, and acceptable and appropriate) for unmarried and married young people.

### Achievement of this Year

SWATI has formed adolescent groups ( Boys and Girls ) and oriented them on cause and effect of Child marriage practice in the area and organized the villagers and discussed about the adverse effect of Child marriage, created mass awareness through Padayatra, Street play, Samavesh, School awareness programme on child marriage prevention.

SWATI has also organized awareness campaigns with PRI members, Traditional heads, District Child right protection team, School teachers, Anganawadi and ASHA workers and Students on Child marriage prevention.

SWATI has also given training to adolescent groups on adverse effect of child marriage, process to check the child marriage practice and how to motivate the villagers and family members not to allow child marriage. The Organisation has also arranged trainings on life skill, adolescent health, Formal education for dropouts and for vocational trainings and placement opportunity.



The Organisation has highlighted the child marriage issues of the area in legal forums and provided legal supports to the victims.

SWATI has taken different activities to strengthen the process by different thematic head, Capacity Building of PNGO Staff on Life Skill Education, SRHR, SMC & CPC, Data Base Creation, Cluster Plan Exercise, and Study & Survey: Base Line; Market Research, School Assessment, Doer & Non-Doer (Child Marriage).

The adolescents are provided health check up and sexual reproductive health service through SHRADHA clinics.

Arrangement of Ananya Sisu Surkhya Ratha Campaign on Child Rights, Protection and Child Marriage prevention in 5 Blocks by the organisation.

The Organisation has arranged Football tournaments, cultural programmes, school level quiz and competitions for the encouragement of adolescents.

The Organisation has also arranged Capacity Building of DLs on Life Skill Education based on Lalita & Babu Module, Capacity Building of Peer Support Network on Life Skill Education by Trained DLs and Orientation to Stakeholders on Child Right, Child Protection and Life Skill Education.



**ANANYA Initiatives**

- Block Level Girl Federation : 1 Block
- GP Level Girl Federation : 9 GP
- Village Level Child Protection Committee: 100 villages
- Strengthening & Establishing 3 Nos SRADHA Clinics
- Sexual Reproductive Health Rights Education : 2500 plus Adolescent boys & Girls
- Life Skill Education to 4000 plus Adolescent boys & Girls
- Adolescent Financial Literacy to 217 Girl at Risk
- 9 Information Dissemination Centre (IDC) for adolescent Girls in 9 Clusters
- Child Marriage stopped/refused : 56 nos
- Girls Football Team in 3 GPs

**Impact of this Project**

The Process has created awareness among the villagers about the adverse effect of Child marriage. Now they are well informed about the Social, Economical, Health and legal issues related to child marriage. The corporation of Traditional leaders, PRIs, Health workers, Child line members and Teachers in this process has created it more focused and influential.

56 cases of Child marriage have stopped and solved. The process has given strength to the

adolescents to say no to their family members for marriage in child age and to take self decision on their own marriage. It has given a platform to them to discuss and decide about their own future related to marriage, Education, employment and other social aspects. It has also freed them from family pressure and burden on marriage and given scope to thinking independently to take decision about their marriage and future.

The Training, Exposure and linkage of the process to different legal forums and administration has given strength and confidence to adolescents to fight for their right to education, self decision on marriage and future.

The SHRADHA clinic health support has broke the reluctance of adolescents for discussing the sexual health problems. When in the year 2016 only 23 cases were enlisted and it slightly increased to 116 numbers in 2017. But in the first quarter of 2019 more than 360 cases have with more than 70% girls and 30% boys. It proves the increasing awareness of adolescents on Sexual and Reproductive child health through the project.

The life skill development training programmes have provided opportunities for engagement, Higher Education, Employment and income generation to adolescents. SWATI has extended higher education support to 625 School dropout and those are at risk of child marriage. Similarly in support of ASRHR, SWATI has provided engagement and employment opportunity to educated adolescents those are at risk.



## ANANYA Girl – Jharana



Twenty years old Jharana of Letingia village is well known among the villagers for her heroic work in standing up to child marriage and motivating the adolescents for life skill education. Letingia village of K.Nuagaon block in Kandhamal district is an interior village, Where Jharana lives with her family. Due to poverty and lack of education and awareness the villagers of this area practice child marriage and above 50% girls are forced into an early marriage. At the age of seventeen, when she was reading in collage also faced the same situation. Some of her relatives motivated her parents to stop her study and give her marry. But she asserted that she would not marry until she had finished her education. Fortunately, her parents respected her decision and declined the marriage proposals. But when one of her childhood friend was forced to marry in tender age it affected her badly. As a learned girl she thought that it is a very bad practice and should stop, but she was unable to raise voice against this community practice.

When SWATI initiated ANANYA project on prevention of child marriage in her area she joined in it with interest and took part in all programmes. She took trainings and orientations about the legal aspects of child marriage prevention and child right, life skill education, adolescent health and got empowered with the knowledge gained from these life skills programmes. She took leadership to form an adolescent girls group in her village and shared the knowledge she gained from SWATI's training with other girls in her community and encourages them to stand up to early marriage. She also organised the village girls and aware them on girl's right and value of education. She also took initiative to stop two child marriage cases in his village and organised regular village discussions on child marriage prevention act. She also designed a street play with the girls group about the bad effect of child marriage and staged it in her village. All these initiatives attracted the villagers and gradually they listened to her.

Now Jharana is reading +3 at Raikia collage and spending most of her time in organising the adolescent girls and motivating them to Say No to Child Marriage. She is also acting as a member of Block level Ananya Girls federation of SWATI and attending many district and state level discussions on child right and child marriage and raising the issues related to child right and Child education of her community



## Early childhood Care and Education (ECCE)

### The Project

To create education opportunity for children from the most marginalised communities SWATI is implementing Early Childhood Care and Education in Phiringia block of Kandhamal district with the support from Save the Children. The main objectives of the programme are - Create an environment for Children of 3-6 years have an opportunity for a quality preschool education and are better prepared to be school ready and reach their full potential, Increase access to a child-friendly learning environment in state run preschools (Anganwadi Centres) and ensure a smooth transition to primary schools, Enhancement of the capacity of ICDS workers and early grade school teachers to provide caring, stimulating and healthy learning

SWATI is implementing ECCE programme in 122 villages covering 14 GPs and 6 ICDS sectors of Phiringia Block with 100 Anganawadi centres and 50 Primary schools. Total 2310 children under 3 years age and 1954 children of 3 to 6 year age group are treated through this programme. The major activities of this programme are Training and capacity building of Anganawadi workers, Healpers, school teachers,



environments for children and engage with government and other relevant stakeholders to prioritise pre-school education with evidence based research on the impact of quality early education. The four dimensions of this project are Ready Children, Ready Families, Ready Schools and Ready System.

Awareness and orientation of parents, community leaders and community institution heads on importance of early childhood education, Development of study materials for children and centres.

### Achievements of this year

Workshops are arranged in block and district level with administrators, experts, teachers and parents about the problems and possibilities of



improvement in Early Childhood education in backward areas.

100 numbers Community Awareness Campaigns have organised to orient parents on importance of early childhood education, role of AWC & AWWs, RTE act & role of community institutions.

Enrolment drive programmes have organized in all Anganawadi centers and Schools to ensure more children get enrolled in Anganwadi Centers and smooth transition to primary schools

Orientation programmes are organised for Matru committees and janch committees to ensure their active role in running of Anganwadi centres.

Observation of different national and international days, wash and sanitation activities have done in Anganawadi and school level. The organisation has organised 14 GP level Sishu mela and 1 Block level Sishu mela to improve the sport skills and cultural skills.

Swati has also organised 4 Refresher Trainings for AWW, 2 Refreshers Training for AWH, 100 Early Learning Material at Home Training for

AWC going parents. Different Early Learning Materials have developed and distributed to AWCs and Schools to attract children for learning.

### Impact of this Project



This process has encouraged the parents, AWWs and teachers to give importance on early childhood care and education and the attracted the children to centers and schools. Now attendance has increased to 90% above in centers. 80 % AWWs are conducting pre-school education classes as per ICDS norms and schedule.

60% of trained ICDS workers and early grade school teachers have started practicing child centric and activity based classroom transaction processes. 55% of intervention school have functional school libraries.

The irregular AWCs are regularised and community participation in management of AWCs have increased.

## Learning Materials changed the attitude of Jilapi

Jilapi, the 5 years old girl of Latapangia Anganawadi center was always reluctant to come to the center and was remained silent throughout the session. She was not interested to play with other children and to take part in any classes. The ECCE staff Nirupama marked this and decided to change her attitude.

She went to her parent and discussed about Jilapi's silence. She observed that they are not taking proper care of their children due to workload. They are not also sowing interest towards their proper education, food and nutrition etc. She is clear that these factors have made Jilapi silence.

The other day she went to Anganawadi carrying some learning materials and toys developed by the team. She sat with Jilapi and other children and play with them. She

also prepared some clay toys, leaf and flower designs collecting there with children. She tried to engage Jilapi in these games and talked more to more with her. She also told interesting stories and sang action songs with them.

After some days she marked that Jilapi's attitude is changing rapidly. Now she is not reluctant to come or to play with others. The Anganawadi worker informed that now she is making flower designs in her own. On ECCE day when her mother came to the meeting Nirupama asked her about Jilapi. She smiled and said that now Jilapi is insisting her to listen stories every evening. She is telling stories about dog, monkey, cow etc and feeling self happiness. Nirupama suggested her to listen Jilapi carefully and to take care of her education.

## National Institute of Open Schooling (NIOS)

SWATI has established a Study Center under National Institute of Open Schooling (NIOS) at Bandhagada helping the dropout children gain access to formal education since 2011. In 2006-07 when the organization had joined with FVTRS through skill development programmes, it had surveyed to find out the percentage of dropouts and planed to enroll them for higher education and education. In 2011 FVTRS started support to SWATI for opening the National Institute of Open Schooling (NIOS) center at Bandhagada accredited as AI-AVI-SLEID. Now NIOS is providing the following supports to Dropouts through Study center. Offline enrollment, examination registration, study material distribution, personal contact programmes and conduct practical examination.

NIOS is trying to create a friendly environment between student and facilitators for a easy learning process through different workshops and training programmes

NIOS is trying to contact directly with the learners for smooth communication by issuing ID card till getting their certificate.

During 2018-19 Academic Year 45 students have enrolled, 34 appeared examination and 11 students have passed out from the study centre. Since inception total 765 students have been registered in NIOS, Out of them 594 Students have appeared the examination. Total 346 students have passed out from the Institute.

## STUDY RESEARCH AND DOCUMENTATION

Documentation of success stories, innovative experiments facilitate intensive learning, training, advocacy, programme planning, public relations, review and sharpening of goal and vision of implementing organization. Documentation' plays an important role in effective functioning and success of an organization. Holistically, it goes beyond the rhetoric of routine reporting on programmes and activities. SWATI believes that Good documentation and communication are crucial for creating a favourable environment for the programme/project in the organization and the community. With the broadening and deepening of the developmental interventions SWATI has enriched its internal as well as external documentation. It prepares quarterly, half yearly reports and publishes Annual report of the organization.

SWATI has published "Eei Matira Katha" and "Jibanadhara" books on Livelihood and Health. SWATI has also published posters, brochures

and leaflets on MNREGS, FRA and PESA, Malaria, AIDs, Environment and Swachha Bharat Abhiyan. SWATI has published hand books on Jangala Jami Adhikar (Odia), developed and distributed public education materials on MGNREGS, Mother and Child health and Women rights.

SWATI has prepared Audio Visual Documentary on MGNREGS, Agriculture, DBI, Tribal Development, WADI, Hydro Project, Maternal Newborn Child health and Nutrition and Malaria. SWATI has also developed an audio CD on different development themes. To educate the villagers and to disseminate information SWATI has opened panchayat level information centers and public library at Paburia, Bandhagada and Phulbani.

The Organisation has also its own website: [www.swatiodisha.org](http://www.swatiodisha.org) with all updates of its programmes, activities, reports and information.



## HEALTH



Health Program of SWATI has evolved over the years as an important anchorage of its engagement with the community. It was confined to sensitization and awareness building during the initial years of Organization, but now it holds significance on account of its outreach and diversity. SWATI believes that health is a major concern for the undeveloped area and poor community and the enjoyment of the highest attainable standard of health is one of the fundamental rights of every citizen. Health service is not only the top priority of the social development; it is the basic need and right to live of the people. The United Nation has also given priority to this in its Sustainable Development goal no – 3 and ensured good health and well-being for all at all ages. SWATI has been implementing numbers of programmes with the support of State government, Health department and non-government support to address the health issues and needs of the area.

In previous years, SWATI had implemented Malaria eradication Programme, Maternal Newborn Child Health and Nutrition ( MNCHN ) programme, V4 Sub-centre Programme, PEHCHAN for transgender community , Swacha Bharat Abhiyan and Community led Sanitation, Solid Liquid Waste Management and Vegi-cart in its project area. Health Programme of the Organisation at present; includes project on Maternity Waiting Home, Targeted Intervention Programme for AIDs awareness and treatment, Marriage No Child's Play ( MNCP ) to check the child marriage and to improve the adolescent health and awareness, Promote right for Adolescent & Children on Develop initiative programme (PRACDIP), Delivery Van and Bike Ambulance.



## Targeted Interventions (TI)



### The Project:

Targeted interventions are aimed at offering prevention and care services to high risk populations ( Female Sex Workers- FSW, Male having Sex with Male- MSM and Injecting Drug Users- IDUs) within communities by providing them with the information, means and skills they need to minimize HIV transmission and improving their access to care, support and treatment services. To prevent infection through saturation coverage of high- risk groups, provide care, support and treatment to PLHA, strengthen the infrastructure, system and human resources in prevention, care, support and treatment programme and strengthen strategic information management system, SWATI has been implementing Targeted Intervention Programme since 2010 for core group of FSWs spread across five blocks i.e; Khajuripada, Phulbani, Phiringia, Tikabali and G.Udayagiri covering 350 female sex workers (home based – 285 and Street based – 65 ).



Under this Project SWATI has taken different program activities like: Condom Promotion (Promotion/Distribution of Condoms)- Condom demonstration and distribution, Social Marketing and Establishment of Condom Outlet, Develop Inter-personal Behavior Changes Communication, Community Mobilization and IEC activities, STI Clinic provisions of services for Sexually Transmitted Infections, Establishment of Drop-in Centers, Establishment of STI clinic and health camp organisation for Referral and linkage service, Linkage to Integrated Counseling and Testing Centers (ICTC), Creation of enabling environment (Advocacy for Enabling Environment and enrolling more and more TGs through counseling and mobilization).

### Achievements of this Year

Name Of the ACTIVITIES	Target	Achievement	Achievement in %
Condom Distribution	1,37,820	89,988	65.29
Free Condom Distribution	1,01,088	89,988	89.01
Social Marketing Condom	36,732	00	00
One to One Contact	17,912	17,644	98.50
One to Group Contact	1,114	985	88.42
Review meeting	48	48	100%
PMC Meeting	06	06	100%
CMC Meeting	04	04	100%
Hotspot meeting	72	72	100%
DIC Meeting	24	24	100%
Counseling sessions done	1972	1914	97.05%
STI symptomatic Identified	0	73	--
TB Testing	303	179	59.07
Identified HIV +	00	00	00

During this Year SWATI has achieved in providing support to 1418 RMC out of 1577, 738 HIV cases out of 780 and 506 Syphilis cases out of 777.

**Social Security Programmes for Key Persons**

SL NO	Name of the Hot Zone	Indira awas		Pension		Ration Card		Adhar Card	
		Eligible	Covered	Eligible	Covered	Eligible	Covered	Eligible	Covered
01	Phulbani	12	04	13	06	39	22	64	36
02	Phiringia	14	07	14	08	42	32	64	51
03	Khajuripada	11	06	13	08	51	34	62	48
04	G.Udayagiri-1	18	0	12	06	54	46	66	46
05	G.Udayagiri-2	17	0	19	09	46	33	60	33
06	Tikabali	21	18	28	17	49	41	62	49
<b>TOTAL</b>		<b>93</b>	<b>35</b>	<b>99</b>	<b>54</b>	<b>281</b>	<b>208</b>	<b>378</b>	<b>263</b>

SWATI also organized AIDs awareness campaign, College Level Quiz Competition, Signature Campaign, Workshop on Rights & Entitlements of Transgender, Observation of World AIDS Day , International Women's Day, Vigilance Awareness Week and participated in District Level Opening Ceremony of VHND Level HIV & Syphilis Testing and Monthly District Level TB/HIV Coordination Meetings regularly.

**Impact of the Project**

The project has created an impressive impact towards checking the STI/HIV & AIDS infections in High Risk Behaviour Groups and the general population. It has created awareness and practice for Adoption of safe sexual practice measured in terms of increase in use of condom, increased understanding on the ways of that infection spreads, facilitated to accessing clinical health services and taken measures to reduce risk level from high to low.

The Project has also given an alternative income source to the Female Sex workers through

different income generation trainings and facilitated to include in different social security schemes.

The project has organized the FSWs and given legal support and advocacy support to them, promoted their organization to fight for their rights and entitlements. The regular interaction, Orientation, counseling, clinical support and care by the organization have increased their self confidence towards a healthy and purposeful life.



## Maternity waiting Home ( MAA GRUHA )



### The Project

Establishment of Maternity waiting homes in remote and inaccessible areas has been one of the initiatives designed under National Rural Health Mission to increase institutional delivery so that maternal mortality as well as Neo Natal Mortality could be reduced. Maternity Home not only provides accommodation facility to the pregnant mother, days before the expected date of delivery but also health care services by trained health professionals and includes provisions of nutritious food for the pregnant mothers. SWATI has been managing a maternity waiting Home at Balandapada of Phiringia Block since August 2013 with the support of National Rural Health Mission of Government.

The outreach area of the Maternity home covers six panchayats i.e. Luising, Balandapada, Pahiraju, Krandibali, Kuerimandu and pakari. These areas are mostly remote and inaccessible and far away from government health facilities. Villagers are mostly depending on traditional healers and local quacks for health service. Poverty and lack of awareness have been forced them to adopt traditional health care practice since generations. Lack of money for treatment, distance of medical and health institutions from village, lack of government initiatives to provide health facilities at village level, inactive village level health institutions, absent of good doctors in medical, traditional bondage and many such

problems have been made the villages inaccessible to modern health care services. So to establish alternative support services for address inaccessible areas to ensure institutional delivery, To change Knowledge, Attitude & Practice of rural people towards Maternal and Child Health care and to ensure 100% Institutional Delivery in these remote areas SWATI has been managing the Maternity waiting Home.

At the Maternity waiting Home there is a temporary home for Pregnant mothers where they can wait for safe/Institutional delivery, accommodation and food facilities for Pregnant mothers & her escorts, 24 X 7 hours service for attending cases and sifting to nearby Hospital for institutional delivery and Health education sessions for pregnant mothers in MWH using pictorial IEC materials.

### Activities of this Year

Total 297 Pregnant women have admitted in the home and total 2321 person days stayed on an average of 6.31 at Maternity Waiting Home and total 252 live birth and 10 still birth cases have recorded.

The Center has organized Mothers convention, Village discussions on Mother and Child health and food and nutrition camps in village level to enhance the awareness of the villagers on Mother and child care. It has encouraged and supported the families for kitchen garden and



Nutritional garden promotion for food and nutrition security of pregnant mothers.

The responsibility holders of the Maternity waiting Home have been able to built rapport with the government duty bearers ( Doctor, Staff, Nurse, ANMs), grassroots health service providers ( ASHA, AWWs) and the Community, Panchayatiraj Representatives and leaders of the CBOs like SHGs & GKSs, The Coordinator and the Attendants participate in ICDS sector meetings, ASHA sector meetings and VHND sessions. The Center has awarded Anganawadi and ASHA in Gandhi Jayanti for their achievement for mother and child care.

## Impact

This programme has created confidence among pregnant mothers on institutional delivery and increased their awareness level on pregnancy care and Neonatal care. It has also created awareness on medical facilities and government provisions on delivery among the villagers. It has given motivation to not believe blind beliefs, not to perform unhealthy rituals and not to depend on traditional healers and quacks. This programme has also activated the village level health institutions, Anganawadi centers and Gaon Kalyana Samiti activities.

## BIKE Ambulance and Delivery Van



To Ensure the Institutional Delivery of the Pregnant Mothers in inaccessible areas of Kandhamal district and to provide Ambulance facility at the door step SWATI has started BIKE AMULANCE and Delivery Van services in Phiringia Block area with the support of National Health Mission, Kandhamal.

This Bike Ambulance can reach in inaccessible villages and provide service to the villagers in free.

This service is providing transportation support to delivery mothers and reducing the percentage of IMMR and MMR in the remote villages. This is also engaging in transporting sick/newborn children up to 5 year and emergency health care.

### Achievements of the Year

Total 73 persons including 42 pregnant women have got ambulance facility from this and among

them 41 pregnant women are provided institutional delivery facilities.

Similarly SWATI is providing Delivery Van facility to the villagers of Phiringia Block with two staff nurses, two attendants and two drivers for on road delivery facility in Van. Within four months it has provided services to 109 pregnant women.

## Promote right for Adolescent & Children on Develop initiative programme (PRACDIP)

### The Project

The main objectives of this programme are reduce down the incidents of infant and maternal mother deaths in the project intervention, reduce the level of severe underweight and severely acute malnutrition children rate among the children at early age of 6 months to the 5 years from the selected villages and reduce down the rate of anaemia among the adolescents and the pregnant mothers in the selected villages of the Phiringia Blocks of the Kandhamal district of the Odisha.

SWATI has initiated this programme from March 2019 in 4 GPs of Phiringia block i.e. Pahiraju, Kuermandu, Luising & Balandapada covering 75 villages and 3274 households with the support from Child Right and You (CRY).

## Panchayati Raj and Governance



Governance is wider than government which ensures the responsibility and accountability of various communities i.e. government and the civil society. For the upliftment of rural communities there is an esurience of delivering better service by using information technology and giving better quality of life at grass roots. For this there is a need to strengthen democracy through good governance. So SWATI has been always given importance to strengthen the community empowerment processes in its projects and activities. SWATI has been promoted different community based organisations and given them orientation to act for community rights and interest. It has been implementing PRI, Good Governance and Social Justice programmes to empower, educate, aware and organise the community enabling them to access their citizen rights and government programmes and schemes and to participate actively in governance process.



Under this initiative SWATI has strived to strengthen the structure, system and procedures of governance imparting capacity building trainings to PRI members, sensitization, Knowledge and skill building of the community and handholding support for realization of rights and entitlements are the mandates of the

initiative. Constant endeavour in strengthening

community based organisations and networking of CBOs to create a pressure group and facilitation of planning and its execution has impacted the lives and livelihoods of the partner community.

Due to this initiative community participation especially women participation in panchayatiraj system has has increased a lot. Villagers have gained knowledge on different schemes and programmes of the government and RTI and other constitutional rights. The community organisation process has empowered them to execute their citizens right and to guide the development programmes in village level.

## Social Audit

SWATI is implementing Social Audit programme in 4 blocks of Kandhamal, 3 blocks of Khordha and 3 blocks of Ganjam in association with state government and District Administrations. The main Objective of this process is to access the physical and financial gaps between needs and resources available for local development and to create awareness among beneficiaries and providers of local social and productive services. It is the technique to understand, measure, verify, report on and to improve the social performance of the department and the process to identify narrow gaps between vision/goal and reality, between efficiency and effectiveness. SWATI has effectively implemented this process in targeted clusters and organised camps with administration and villagers, identified gaps and irregularities and negotiated concern department to correct the mistakes and faults.

Due to this process many villagers have got their pending dues in MGNREGA works, Indira Awas, Pension and other social security and government provisions. Many Departments have rectified their implementation faults in project work and many pending works have complemented. This process has created a clean relationship between departments and the villagers and empowered the community on information and implementation of government development programmes.

### AN APPEAL

SWATI, a non-governmental voluntary organization has been working since 1997 in the field of Tribal and Rural development. Its initial engagement in the Natural Resource Development has broadened its programme and activities as well as its perspective helping its take a holistic approach of the lives and livelihood. The present shift has been towards adoption of the livelihood approach rather than a sectoral approach to resource management.



Not only there has been adoption of a holistic perspective, the interventions during these years have established models for propagation and replication. SWATI has planned for further diversification of its activities in the coming days. Keeping in mind the recent change in the society; SWATI has planned to establish an Old Age Home and a Shelter for Homeless Children. Its modalities will be worked out further, once the idea gets across and the individuals and organizations build partnership with SWATI for the cause.

SWATI solicits donations from individuals as well as organizations to contribute for the noble cause. The Organization has been registered under 80G for the donor and contribution to get exemption as per the provision under Income Tax Act.

At the same time SWATI pledges to remain accountable to the donor and contributors and promises to take all the measures for effective utilization of the funds so that the noble cause for which the contribution made is realized.

## STATUTORY INFORMATION

Statutory Auditor	:	M/s. Anil Patro & Associates, Bhubaneswar
Internal Auditor	:	Dharani and Company, Bhubaneswar
Legal Advisor	:	Adv. Ratikanta Mohapatra, Bhubaneswar
Bankers	:	State Bank of India, Paburia/Gutingia/Sarangada/ G.Udaygiri/ Phulbani/Tumudibandha, Berhampur ADB, G.Udaygiri, UGB Phulbani/Belaghar, Andhra Bank, Gosani Nuagaon, Podamari
Public Information Officer	:	Er. Hari Sankar Rout, Secretary, SWATI
First Appellate Authority	:	Prasanta Satapathy, Chairman, SWATI

GOVERNANCE				HUMAN RESOURCE PROFILE				
Category	Male	Female	Total	Level	Male	Female	TG	Total
GB Member	4	3	7	<5000	22	21		39
General Body Member	7	4	11	<10000	29	15	2	41
				<15000	8	6		13
Full time staff	52	47	99	<20000	7	3		8
Part Time staff	9	6	15	>20000	4			2
				Total	70	45	2	103

## SWATI GOVERNING BODY &amp; GENERAL BODY MEMBERS

Name of the Board member	Address	Gender	Position in the Board
Mr Prasant Satapathy	Plot no – 219/1386/2632, Bhubaneswar - 751001, Dist: Khurda, Odisha Mob – 9437242872, E-mail: prasantasatapathy@gmail.com	Male	Chairman
Mrs. Rasmirekha Khatua	At – Nadikhandi Sahi, PO – Phulbani – 762001, Dist – Kondhamal, Odisha Mob – 9438061108, E-mail: bnkhatua@rediffmail.com	Female	Vice-Chairperson
Er. Hari Sankar Rout	At – Pradhan Colony, PO – G.Udayagiri– 762100, Dist – Kondhamal, Odisha. Mob – 9437186128, E-mail: swati_pab@yahoo.co.in	Male	Secretary
Mr. Santanu Kumar Mishra	At – Amala pada, PO – Phulbani – 762001, Dist – Kondhamal, Mob – 9437192365, E-mail: paribes_plb96@rediffmail.com	Male	Treasurer
Mrs. Premasi Nayak	District Programme Officer, OLM, Dhenkanal, Mob - 9437359381	Female	G.B Member
Mrs. Sujata Mohapatra	K-4, LIG - 744, Kalinga Nagar, Po – Patrapada, Bhubaneswar - 751019, Dist: Khurda, Odisha, Mob – 9861732858, E-mail- Sujjiosam@gmail.com	Female	G.B Member
Mr. Prasanta Kumar Mishra	At /PO – Tikabali, Dist – Kondhamal Odisha- 762010. Mob - 9437765167	Male	G.B Member
Mrs. Santana Nayak	At – Nuasahi, PO – G.Udayagiri– 762100, Dist – Kondhamal, Odisha, Mob - 9438043680	Female	General Member
Mr. Lal Nanda Pradhan	At /PO – Paderi pada, Tala Dandikia, Via – Bandhagada, Dist – Kondhamal , Odisha, Mob - 9439267104	Male	General Member
Mr Jimuta Prasad Mishra	MIG- 2, 27/1, OSHB Colony, Chandrasekharpur Bhubaneswar, Dist – Khurda, Odisha Mob - 9337103930 , E-mail- jimutamishra@gmail.com	Male	General Member
Mr. Prasanta Kumar Das	At – Nuasahi, PO – G.Udayagiri– 762100, Dist – Kondhamal, Odisha, Mob – 7750009500, E-mail – tukuonly@gmail.com	Male	General Member

## Social Welfare Agency &amp; Training Institute (SWATI)

Regd. Office At: Trinath Temple Street, PO: Gosaninuagaon, Dist: Ganjam, Pin:760003, Odisha.  
Project Office: At/Po: Paburia, Dist: Kandhamal- 762112 (Odisha)

## Consolidated Income &amp; Expenditure Account for the Period from 01.04.2018 to 31.03.2019

Expenses	Amount (Rs)	Amount(Rs)	Income	Amount (Rs)	Amount (Rs)
To <b>Project Expenses (Annexure-I)</b>			By <b>Grants-in-Aid (Annexure-IV)</b>		
TI-FSW, Phulbani	12,49,735.00		TI-FSW, Phulbani	12,38,355.00	
Millet Promotion	7,17,811.00		Millet Promotion	7,17,811.00	
OTELP Plus	10,13,952.50		OTELP Plus	10,13,952.50	
Management of V4 Sub-centre	42,349.00		Management of Maternity Waiting Home	11,78,068.00	
Management of Waiting Home	11,90,528.00		WADI (Proj)	12,67,823.70	
WADI (Proj)	13,06,553.70		WADI (Adm)	85,910.00	
WADI (Adm)	85,910.00		FADP, Phulbani	4,03,781.00	
FADP, Phulbani	4,03,781.00		FADP, Balliguda	10,37,333.00	
FADP, Balliguda	10,37,333.00		MNCP	49,22,039.50	
Block Resource Centre	2,51,470.00		Management of V4 Sub-centre	42,349.00	
DBI, SDTT	37,81,710.50		Ferrai-Education	66,12,832.50	
Swachha Bharat Mission	78,415.00		Block Resource Centre	2,51,470.00	
NULM	11,14,122.90		DBI, SDTT	37,52,361.00	
E-Library	2,50,480.00		Swachha Bharat Mission	78,415.00	
OFSDP (Muzagada)	11,66,667.00		NULM	12,97,522.90	
OFSDP (Jagannathprasad)	4,64,334.00		E-Library	2,50,480.00	
Base Line Survey at TSP village	13,500.00		OFSDP (Muzagada)	12,05,069.00	
IRRI	1,30,480.00		OFSDP (Jagannathprasad)	4,68,999.00	
FPO Promotion	83,343.00		Base Line Survey at TSP village	13,500.00	
Bike Ambulance	1,02,113.00		IRRI	1,30,480.00	
NIOS	7,645.00		FPO Promotion	3,73,343.00	
Deliveryvan	2,30,357.00		Bike Ambulance	1,02,113.00	
MNCP	49,22,039.50		NIOS	7,645.00	
Ferrai-Education	66,12,832.50	262,57,462.60	Deliveryvan	2,30,357.00	266,82,010.10
To SWATI General A/C	29,32,477.60	29,32,477.60			
To Onlending Loan to SHGs Written off	1,10,877.50	1,10,877.50			
To General (FC) A/C Expenses	45,963.00	45,963.00	By <b>Other Receipts (Projects)(Annex- I)BI</b>		
			MNCP	25,464.00	
			Ferrai- Education	26,803.00	
			WADI (Proj)	35,707.00	
			WADI (Adm)	405.00	
			TI-FSW, Phulbani	3,554.00	
			Divesion Based Irrigation, SDTT, Mumbai	26,184.00	
To Written off- Grants Receivable	6,01,917.00	6,01,917.00	Millet Promotion	7,004.00	
			Staff Development Fund	8,100.00	
			Corpus Fund	3,550.00	1,36,771.00
			By <b>Interest on FD (Corpus Fund)</b>	18,883.00	18,883.00
To Depreciation (Annex-III)		4,48,528.03	By Interest Accured on FD	59,758.00	59,758.00
			By General A/C Income		40,67,782.00
To Excess of income over exp.		5,70,129.37	By General (FC) Income		2,151.00
<b>Total</b>		<b>309,67,355.10</b>	<b>Total</b>		<b>309,67,355.10</b>

Place: Paburia

Date: 16.09.2019

  
Chairman

Chairman

SWATI

B.J.P. &amp; Co.

Chartered Accountants

EHUBANESWAR

Reg No.

324601E

  
Secretary

Secretary

SWATI

  
Treasurer

Treasurer

SWATI

For B J P &amp; Co

Chartered Accountants

  
(P. Anil Kumar Patro)

Partner

## Social Welfare Agency &amp; Training Institute (SWATI)

Regd. Office At: Trinath Temple Street, PO: Gosaninugaon, Dist: Ganjam, Pin: 760003, Odisha.  
Project Office: At/Po: Paburia, Dist: Kandhamal- 762112 (Odisha)

## Consolidated Income &amp; Expenditure Account for the Period from 01.04.2018 to 31.03.2019

Expenses		Amount (Rs)	Amount(Rs)	Income		Amount (Rs)	Amount (Rs)
To	<b>Project Expenses (Annexure-I)</b>			By	<b>Grants-in-Aid (Annexure-IV)</b>		
	TI-FSW, Phulbani	12,49,735.00			TI-FSW, Phulbani	12,38,355.00	
	Millet Promotion	7,17,811.00			Millet Promotion	7,17,811.00	
	OTELP Plus	10,13,952.50			OTELP Plus	10,13,952.50	
	Management of V4 Sub-centre	42,349.00			Management of Maternity Waiting Home	11,78,068.00	
	Management of Waiting Home	11,90,528.00			WADI (Proj)	12,67,823.70	
	WADI (Proj)	13,06,553.70			WADI (Adm)	85,910.00	
	WADI (Adm)	85,910.00			FADP, Phulbani	4,03,781.00	
	FADP, Phulbani	4,03,781.00			FADP, Balliguda	10,37,333.00	
	FADP, Balliguda	10,37,333.00			MNCP	49,22,039.50	
	Block Resource Centre	2,51,470.00			Management of V4 Sub-centre	42,349.00	
	DBI, SDTT	37,81,710.50			Ferrai-Education	66,12,832.50	
	Swachha Bharat Mission	78,415.00			Block Resource Centre	2,51,470.00	
	NULM	11,14,122.90			DBI, SDTT	37,52,361.00	
	E-Library	2,50,480.00			Swachha Bharat Mission	78,415.00	
	OFSDP (Muzagada)	11,66,667.00			NULM	12,97,522.90	
	OFSDP (Jagannathprasad)	4,64,334.00			E-Library	2,50,480.00	
	Base Line Survey at TSP village	13,500.00			OFSDP (Muzagada)	12,05,069.00	
	IRRI	1,30,480.00			OFSDP (Jagannathprasad)	4,68,999.00	
	FPO Promotion	83,343.00			Base Line Survey at TSP village	13,500.00	
	Bike Ambulance	1,02,113.00			IRRI	1,30,480.00	
	NIOS	7,645.00			FPO Promotion	3,73,343.00	
	Deliveryvan	2,30,357.00			Bike Ambulance	1,02,113.00	
	MNCP	49,22,039.50			NIOS	7,645.00	
	Ferrai-Education	66,12,832.50	262,57,462.60		Deliveryvan	2,30,357.00	266,82,010.10
To	SWATI General A/C	29,32,477.60	29,32,477.60				
To	Onlending Loan to SHGs Written off	1,10,877.50	1,10,877.50				
To	General (FC) A/C Expenses	45,963.00	45,963.00	By	<b>Other Receipts (Projects)(Annex- I)BI</b>		
					MNCP	25,464.00	
					Ferrai- Education	26,803.00	
					WADI (Proj)	35,707.00	
					WADI (Adm)	405.00	
					TI-FSW, Phulbani	3,554.00	
					Divesion Based Irrigation, SDTT, Mumbai	26,184.00	
					Millet Promotion	7,004.00	
					Staff Development Fund	8,100.00	
					Corpus Fund	3,550.00	1,36,771.00
To	Written off- Grants Receivable	6,01,917.00	6,01,917.00	By	<b>Interest on FD (Corpus Fund)</b>	18,883.00	18,883.00
To	Depreciation (Annex-III)		4,48,528.03	By	Interest Accured on FD	59,758.00	59,758.00
				By	General A/C Income		40,67,782.00
To	Excess of income over exp.		5,70,129.37	By	General (FC) Income		2,151.00
	<b>Total</b>		<b>309,67,355.10</b>		<b>Total</b>		<b>309,67,355.10</b>

Place: Paburia

Date: 16.09.2019

  
Chairman


Chairman  
SWATI



  
Secretary  
Secretary  
SWATI

  
Treasurer  
Treasurer  
SWATI

For B J P & Co  
Chartered Accountants

  
(P. Anil Kumar Patro)  
Partner

**Social Welfare Agency & Training Institute (SWATI)**  
 Regd. Office At: Trinath Temple Street, PO: Gosaninuagaon, Dist: Ganjam, Pin: 760003, Odisha.  
 Project Office: AUPo: Paburia, Dist: Kandhamal- 762112 (Odisha)

**Consolidated Balance Sheet as on 31st, March 2019**

Liabilities & Capital	Amount (Rs)	Amount(Rs)	Assets	Amount (Rs)	Amount (Rs)
<b>ORGANIZATION FUND:</b>			<b>As per Annexure- III</b>		
			<b>MOVABLE ASSETS</b>		
Balance as on 01.04.2018	140,24,859.28		Opening Balance	15,52,609.17	
Add: Excess Income over Exp.	5,70,129.37		Add: During the Year	3,20,829.00	
	145,94,988.64			18,73,438.17	
Add: Other Receipts (General FC)	1,80,000.00	147,74,988.64	Less: Sold During the Year	0.00	
				18,73,438.17	
			Less: Depreciation	3,59,767.00	15,13,681.17
<b>CURRENT LIABILITIES, PROVISIONS:</b>			<b>IMMOVABLE ASSETS</b>		
			<b>Land</b>		
Un-utilised Grant (As per Annexure-IV)		23,59,222.60	Opening Balance	5,18,701.00	
			Add During the Year	0.00	5,18,701.00
<b>Security Deposit for Land Lease</b>		1,000.00	<b>Building</b>		
			Opening Balance	17,19,514.51	
<b>Professional Tax</b>			Add During the Year	3,03,595.00	
Opening Balance	0.00			20,23,109.51	
Add: Collected during the period	26,750.00		Less Depreciation	88,771.03	19,34,338.47
	26,750.00		<b>Security Deposit</b>		
Less: Paid during the year	26,750.00	0.00	Opening Balance	1,83,200.00	
			Add: During the Year	70,000.00	
Loan from C.K Nayak (Rehnuma)	9,985.00			2,53,200.00	
	9,985.00		Less: Received During the Year	0.00	2,53,200.00
Less: Loan Paid during the year (SWATI-General)	9,985.00	0.00	<b>Loans &amp; Advances (As per Annexure-I)</b>		
			Staff Advance (MNCP)	17,418.00	
			Staff Advance (OFSDP)	6,131.00	
			Staff Advance (OFSDP from SWATI Gen)	46,441.00	
				69,990.00	
			Add: Paid During the Year	70,000.00	
				1,39,990.00	
			Less: Recovered During the Year	69,990.00	70,000.00
			Office Rent Advance (Phulbani)	20,000.00	
			Less: Recovered During the Year	20,000.00	0.00
			Office Rent Advance (BAM-NULM)	1,500.00	1,500.00
			<b>Earnest Money Deposit</b>		
			Opening Balance	1,00,000.00	
			Add: During the Year	0.00	
				1,00,000.00	
			Less: During the Year	0.00	1,00,000.00
			Grants Receivable (As per Annexure-IV)		39,78,003.02
			<b>Tax Deducted Source</b>		
			Opening Balance	6,94,378.00	
			Add: During the Year	2,44,901.00	
				9,39,279.00	
			Less: Received During the Year	2,809.00	
				9,36,470.00	
			Less: Received During the Year	4,19,443.00	5,17,027.00
			Advance for Purchase of Flat (BBSR)	17,00,000.00	
			Add: Paid During the Year	50,000.00	17,50,000.00
			<b>Current Assets (As per Annexure-II)</b>		
			Cash in Hand	1,738.00	
			Balance with Bank(Grants & General)	45,23,243.58	
			Balance with Bank(Staff Dev Fund)	2,39,772.00	
			Balance with Bank(Corpus Fund)	1,03,644.00	48,68,397.58
			Fixed Deposit at Bank (As per Annexure- V)		15,76,583.00
			Interest Accrued on Fixed Deposit		53,780.00
<b>Total</b>		<b>171,35,211.24</b>	<b>Total</b>		<b>171,35,211.24</b>

Place: Paburia  
 Date: 16.09.2019

*[Signature]*  
 Chairman  
 SWATI

*[Signature]*  
 Secretary  
 SWATI

*[Signature]*  
 Treasurer  
 SWATI

For B J P & Co  
 Chartered Accountants  
*[Signature]*  
 (P. Anil Kumar Patro)  
 Partner



UDIN NO- 19208848AAAAAG3476

# 20

# Years Journey



## Project Office:

Paburia, Phulbani, Bandhagada,  
G.Udayagiri, Balandapada,  
Belaghara & Tumudibandha of  
Kandhamal District

Brahmapur, Bhanjanagar &  
Jagannathprasad of Ganjam,  
Butpalli of Boudh and Bhubaneswar of  
Khordha District

**Social Welfare Agency and Training Institute ( SWATI )**

At/Po : Paburia, Dist : Kandhamal – 762112, Odisha

E-mail : [swati\\_pab@yahoo.co.in](mailto:swati_pab@yahoo.co.in), Website : [www.swatiodisha.org](http://www.swatiodisha.org)

