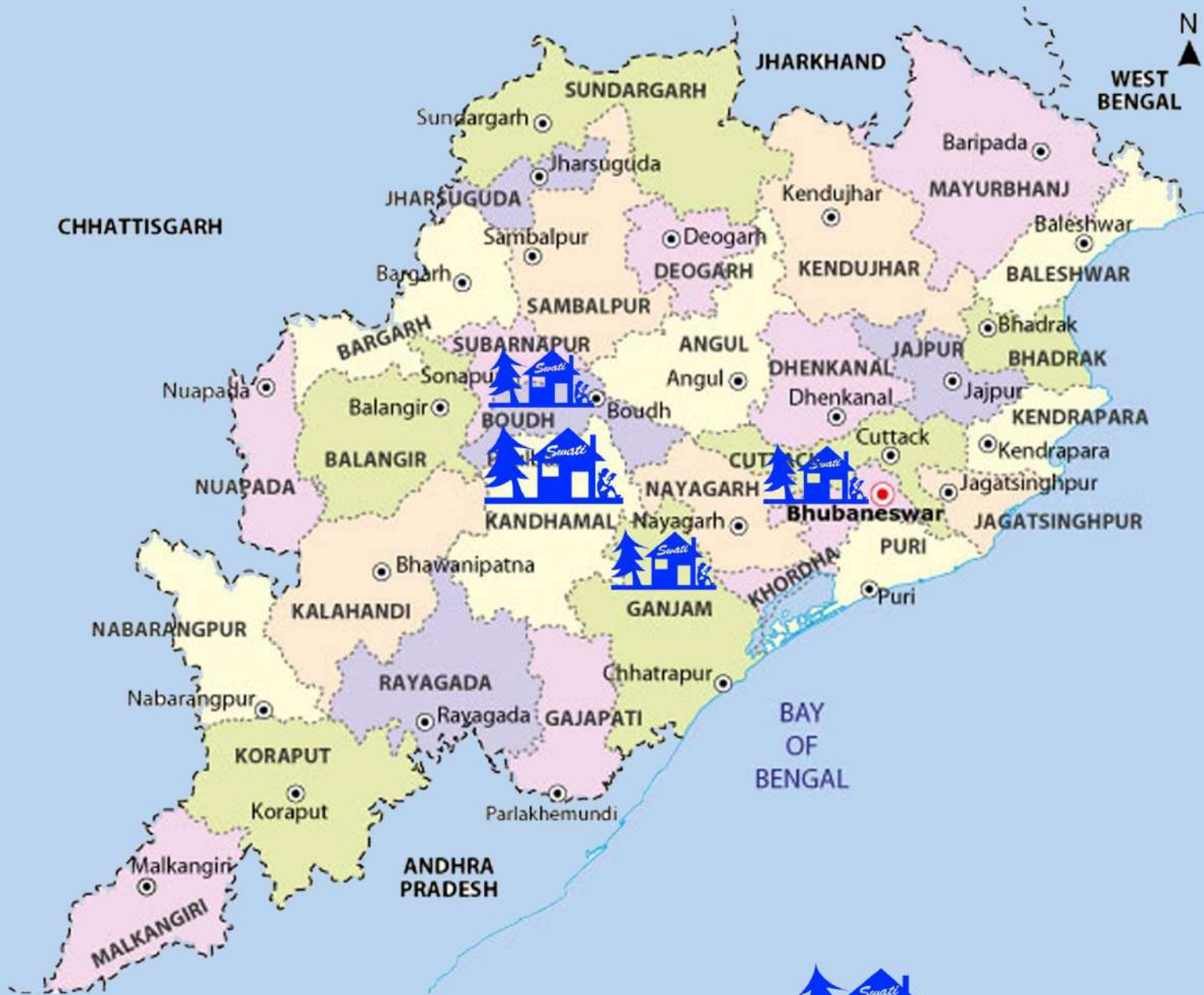


ANNUAL REPORT 2020-21



Social Welfare Agency and Training Institute (SWATI)
At/Po : Paburia, Dist : Kandhamal – 762112, Odisha

ODISHA STATE



Presence of SWATI in the State Odisha
Kandhamal
Boudh
Ganjam
Khordha

Table of Contents

Subject	Page
Message from the Secretary	4
SWATI – Twenty Two Years in Social Development	5-8
Livelihood and Natural Resource Management	9-23
<ul style="list-style-type: none"> • Odisha Forestry Sector Development Project • Millet Mission • Farmer Producer Organisation (FPO) • Nabard Wadi • Focused Area Development Program (FADP) 	
Health Service	24 - 41
<ul style="list-style-type: none"> • COVID Response & Health Service • Maternity waiting Home (MAA GRUHA) • Targeted Intervention Programme • Promote right for Adolescent & Children on Develop initiative programme • Bike Ambulance and Delivery Van • Village Contact Drive on COVID & Malaria 	
Women Empowerment and Education	42 - 53
<ul style="list-style-type: none"> • ANANYA - Marriage No Child's Play (MNCP) • Economic & Organisational Development of Women • Back to Basic • National Institute of Open Schooling (NIOS) • Study Research and Documentation 	
Panchayati Raj and Governance	54- 56
<ul style="list-style-type: none"> • Formation and Strengthening of CBOs • Advocacy and Awareness • Social watch monitoring 	
An Appeal	56
Statutory Information	57
Audit Reports	58- 62

Message from the Secretary



SWATI has completed its twenty two years journey in the field of social development, standing there with the disadvantaged & underprivileged section towards building an equal and just society. It is my great pleasure to share SWATI's Annual report for the year 2020-21 on behalf of the friends and well wishers of SWATI.

Current year is a crucial and challenging year for the whole world as COVID pandemic has paralysed the life and livelihood of the whole mankind. More than 200 million people have already infected in this disease and 4 million people have lost their life. In India above 30 million people have infected and 40 lakhs have already died in corona. The joint statement by ILO, FAO, WHO and IFAD states that pandemic has led to a dramatic loss of human life worldwide and presents an unprecedented challenge to public health, food systems and the world of work. The economic and social disruption caused by the pandemic is

devastating: tens of millions of people are at risk of falling into extreme poverty, while the number of undernourished people, currently estimated at nearly 690 million, could increase by up to 132 million by the end of the year.

This Pandemic has affected mostly the rural villagers, the farming communities, labour communities, Tribal and rural poor. The rural villagers those depends on daily labour, agricultural labour work and migration for livelihood have become jobless and force to live in poverty. Various study data show that lockdown restriction resulted in a disruption of supply chains for several weeks. The Farmers nor able to take their produce to the markets neither the traders were able to purchase the product from the villages. Consequently, the producers were forced into distress sales. Due to lack of transportation and market access, the prices of perishable products have collapsed, and farmers faced huge losses. The tribal population lost their income from tendu leaf, mahua, tamarind and other NTFP collection because of restriction and market access. Although lockdowns and stay-at-home orders are effectively controlling the pandemic, these interventions also creating negative psychological and economic consequences. It has affected living style of the poor households, their social relationship, family management, child care and education and other health needs during pandemic.

In this context as a social organizations the role and responsibility of SWATI has increased a lot. We have to act more intensively to normalize the life of community and to restore the livelihood opportunities, health, education and social relationship. During this year SWATI has taken some COVID response activities with its own limited resources and supported the community to access the government provisions. It has facilitated the community to get work and employment through MGNREGS, supported to strengthen agricultural and horticultural livelihoods, provided health support to pregnant women, children, older persons and distress families and Doorstep education to children during the pandemic.

I take this opportunity to express our sincere gratitude to the stakeholders in our operational area and donors/support agencies – District administration, DRDA, DWSM, CDM, PHO, Kandhamal, PSU OTELP, Ministry of ST & SC Development & Ministry of Urban Development, Govt. of Odisha, OSFDP, DFO Bhanjanagar, Odisha Millet Mission, SDTT Mumbai, OSACS, IRRI, CRY, TATA Trust, NABARD, OWDM, NIOS, SAVE THE CHILDREN for their co-operation. The year ahead beckon us for dedicated action and commitment and with support and guidance we are determined to bring the changes we have envisaged.

With Solidarity
Er. Hari Sankar Rout
Secretary, SWATI

SWATI – Twenty Two years in Social Development

Social Welfare Agency & Training Institute (SWATI) has crossed twenty two years in social development since its formation in the year 1999. The same year some progressive and educated young friends under the leadership of Er.Harisankar Rout formed the organisation carrying the vision of alternative social development for the poor and marginalised section of the society. They had lots of experiences and expertise on community development in tribal pockets and they started the work from Paburia, a remote tribal pocket of Kandhamal district. Their objectives were to empower the community to lead a sustainable life by managing the natural resources and implementing the government programmes. Initially the organisation started its intervention in Natural Resource Management by adopting the



watershed approach through community mobilisation in Tikabali and Phiringia block of Kandhamal district. In the years that followed, it took on a variety of programmes on different issues like Health, livelihood, Education, Women empowerment, Youth organisation, Mother and child care, Good Governance and Prevention of Child marriage etc.

Legal Identity of SWATI

- **Registration number I.G.R. 21030/169/1999.**
- **FCRA-1976 registration number 105030007/2002**
- **Registered under the 12AA & 80G of IT Act 1961**
- **Registered under the EPF and Miscellaneous Provisions Act-1952 bearing registration number OR/BAM/11047/2012**

During this time period the organisation has achieved many exemplary achievements on Natural Resource Management, Livelihood promotion, Community organisation, Women Empowerment, Youth mobilisation, Improvement in Mother and child health, Malaria and AIDs prevention etc. The

organisation has promoted above two thousand acres of fruit orchards, developed one thousand hectares of barren land in to productive, provided irrigation facility to two thousand acres of land through implementation of MGNREGA, WADI, Watershed and other government

convergence activities Kandhamal district. It has also provided pipe water supply to 25 remote villages through DBI in the district. The Organisation has promoted above two thousand self-help groups in Kandhamal, Khordha, Ganjam and Boudh district and facilitated them for different income generation activities and entrepreneurships. Now the area and scope of its work has expanded to more districts and more families. The Field operation of the Organization is spread across all 12 blocks of Kandhamal District, Bhanjanagar & Jagannath Prasad Block and Berhampur city of Ganjam District, Boudh NAC and Capital City Bhubaneswar of Odisha. The organisation has also achieved state and national recognitions for its excellence in work.

SWATI and its legal status:



Social Welfare Agency & Training Institute (SWATI) a non-government, Not-for-profit organization is registered under SRA, 1860 bearing registration number I.G.R. 21030/169/1999. It is also registered under the foreign Contribution Regulation Act (FCRA), 1976 bearing registration number 105030007/2002, under the 12AA & 80G of IT Act 1961 and under the Employees Provident Funds and Miscellaneous Provisions Act, 1952 bearing registration number OR/BAM/11047/2012.



Healthy and self-reliant community life with dignity ensuring equal opportunity, rights, liberty, justice that enables participation, informed decision-making and creates ability to resolve the issue.



Capacitating the weaker section, especially the women and the tribal through skill building, leadership development, micro credit, natural resource management and increasing demand generation of entitlements with a special focus on enhancing opportunity for sustainable livelihoods and self-reliance.

SWATI always carries these following values to achieve its mission and objectives



Team Work – SWATI believes in Team work and has been giving importance to act as a Team in decision making, implementation and excitation of works.

Transparency – SWATI has been maintaining Transparency in all its works and Records for public and Community.

Community Participation – SWATI has been ensuring participation of community in planning, execution and implementation of its programs.

Gender Justice – SWATI respects and gives equal opportunity to women and creates environment for Gender Justice.

Respect to Community Value – SWATI always gives respect the Community Values of Natural living, thoughts, culture and tradition for social harmony and traditional knowlages related to nature.

Protection of Constitutional values and rights – SWATI gives importance to protect the values related to secularism, communal harmony, Sovereignty and democracy and creates awareness to perform citizens' duty to protect the Constitutional values.



Thrust Areas:

Development of Livelihood resource base through Natural Resource Management

Creation of Support and Sustainable livelihoods opportunities emphasizing optimum use of local resources

Preventive and promotive health services through people's education, creation of community cadres and streamlining of service delivery.

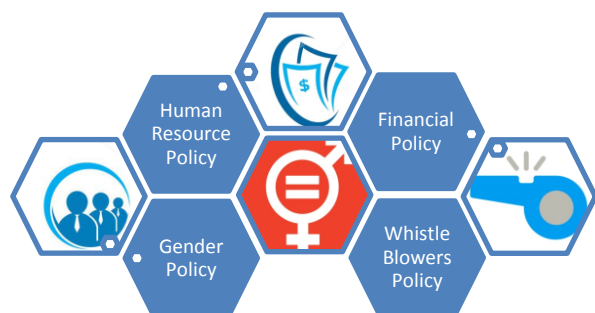
Transparent and Accountable Governance through grassroots mobilization, Rights education, Knowledge and skill building

Formation and nurturing of Community based organizations and their federations.

Promotion of the Culture of "Unity in Diversity" through Youth Mobilization

Protection of Women Right, Protection of Girl Child and Child's right, Prevention of Child marriage through Youth, Girl and Women mobilization.

Policies of SWATI:



Procedures of SWATI:

SWATI is a platform of strong and vibrant group of development activists, experienced and dedicated workers, professionals and intellectuals. All these members are associated in the three different bodies of the organization.

The General Body and the Governing Body of the Organisation have Development Professionals and Activists with representation from different social groups.

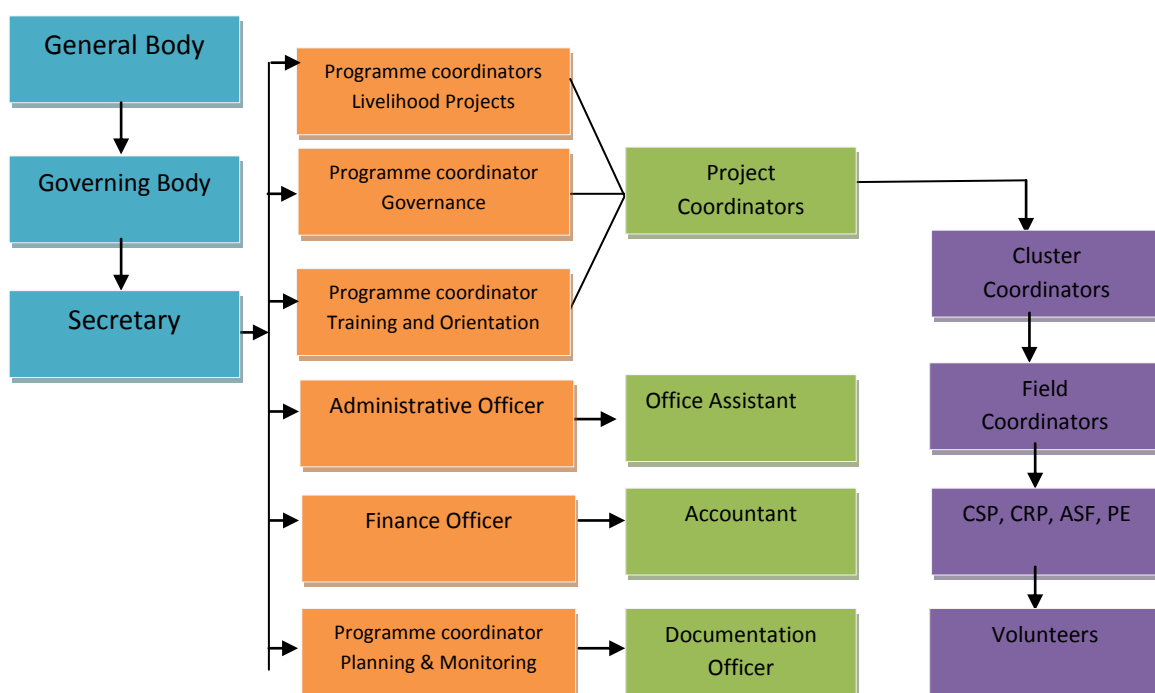
Meeting of the General Body and Governing Body are held twice in a year. Governing Body takes Policy decision and deliberates on strategy issues.

The Secretary is supported by Programme Coordinators, Finance Officer and Administrative Officer. Programme Coordinators are supported by Field Coordinators and Cluster Coordinators.

SWATI's field operations are organized under different projects in their respective areas of implementation. It has four broad wings i.e Programme, Administration, Accounts and Planning, Monitoring and Evaluation.

The ratio of women workers are nearly 50%, whereas above 70% workers are from the district and working area. SWATI always emphasizes to develop the skills and capacity of the worker through training, workshop and exposures.

Organisational Structure of SWATI



Major Programmes of SWATI





Livelihood and Natural Resource Management

The COVID situation has given a deep realisation about the rural livelihood and its relation with the Natural resources management. With COVID-19 pandemic spreading all over the world with significant impact in India, massive consequences on public health and livelihoods are being apprehended. Food security and livelihood are the utmost essential and integral part of rural and sustainable development affecting the livelihood to a large section in the country. The lockdown for more than three months helped in sustaining the health crisis but due to complete shutdown of all economic activities except essential services has created an economic crisis and peril misery for the poor, with massive job losses and rising food insecurity. Due to COVID-19 pandemic, more or less every individual has faced lots of problems. However, the worst affected was the rural population, mainly farmers associated problems like dealing with perishable commodities (flowers, vegetables, fruits,) and migrant and reversed migrant labourers. Also, the so-called secondary livelihood of rural population animal husbandry sector was adversely affected due to restrictions in movement. This lockdown has adversely affected minor forest produce (MFP) collection including honey,gum, bamboo, Tendu leaves, hillbroom grass, tamarind and Indian gooseberries, use and sale by forest dwellers and tribal groups. Migrant workers who lost their livelihood in a pandemic are heading back to their native places in the hope of sustaining their livelihoods in their vicinity. Most migrant workers are daily-wage earners; however, due to the absence of work in lockdown makes it difficult for workers to afford the cost of living in urban areas. But lack of livelihood and income opportunities in village has pushed them to more trouble and misery.

This COVID pandemic gives the lesson about the uncertainty of migration and importance of village based livelihood opportunities and upgradation of traditional skills and knowledge. The rural livelihood mainly depends on natural resources like land, water, forest, Bio-diversity and the rural community has been traditionally acquired the knowledge and skills to earn their livelihoods through its holistic management. But during past few decades, by the influence of market based economy and materialistic modern life style the community has lost both the traditional skills and natural resources. So now it has become difficult for them to make a livelihood in the village.



SWATI has been given priority for the development of Livelihood resource base through Natural Resource Management from its early intervention. Since its inception, NRM has defined its engagement with the community. Programmatic and strategic intervention underlying SWATI's Natural Resource Management Programme has showcased its approach of placing people and their priorities at the top of the agenda. Livelihoods Intervention of the organisation

encompasses promotion of optimal use of local resources, raising production and productivities of the existing livelihoods portfolios, skill building and handholding support for diversification and encouraging entrepreneurship among the marginalized sections of the community.

SWATI's NRM intervention had begun around watershed development under Employment Assurance Scheme and Drought Prone Area Programme. Then it implemented Integrated Natural Resource Management, Integrated Watershed Management Programme, WADI development Programme, Plantation activities through MGNREGS and OTELP Programme to restore the Natural resource. Now the organisation is implementing Odisha Forestry Sector Development Programme, Millet Mission, NABARD WADI and Focussed Area Development Programme (FADP) to strengthen the natural resource based livelihoods. These works have provided employment and income assurance to the villagers during this pandemic period.





Odisha Forestry Sector Development Project (Ama Jangala Yojana - OFSDP – Phase II)

Livelihood Opportunities of Forest dependent Communities through Sustainable Forest Management

Project Background

Ama Jangala Yojana is an endeavour of the Government of Odisha , Forest & Environment Department, being implemented through Odisha Forestry Sector Development Society to promote sustainable forest management in the state with emphasis on livelihood support for the communities living in the forest fringe villages in VSS mode. It is covering 700 VSS and Eco development Committees spread over 30 forest and wildlife divisions. SWATI has been selected to implement this programme with 100 VSSs and 300 SHGs in 4 FMUs – Mujagada, Jagannath Prasad, Tarasing and Central, coming under the Ghumushar North Forest Division in Ganjam district.

Aim and Objectives of the Project

The AJY scheme aims to achieve sustainable forest management in the project area through forest restoration initiatives along with providing income generating and

livelihood opportunities to the forest dependent communities, so that the pressure on adjoining forest is relieved/reduced. The main objectives of AJY Scheme are – To conserve and restore degraded forests through forest restoration initiatives, To arrest further degradation of forests through participatory forest conservation and management strategy, To empower forest dependent communities by building their capacity to participate in the sustainable forest management and to improve the livelihood opportunities of the forest dependent communities so as to reduce their dependence on forests.

Activities and Achievements of this Year

Village Development Plans in Central and Tarasing FMU has been prepared and passed by Gram sabha.

Inter plantation of forest plants in 390 hectares forest area and plantation work in 17

hectares land has been done with the support of Village community. Trench renovation and land development activities have been done in 47 hectares forests land. Farm forestry has been raised in 111 hectares land of 241 families.



50 VSS buildings of Mujagada and Jagannath Prasad FMU have been completed and other 50 VSS buildings of Central and Tarasing are under construction.

To provide irrigation facilities to the villages' construction of check dams, dug wells, farm ponds, bore wells and cement channels works have been done.

46 animal vaccination camps have been organised to provide animal health support to the farmers.

Infrastructural development activities like construction and repair of village roads, culverts, renovation of ponds, construction of changing room for women at bath site, stares in ponds and rivers, construction of community toilet, cremation ground, Anganawadi centres, riverside and roadside guard walls, cowsheds, establishment of drinking waters projects, solar based pipe water service, electrification and street light and many other works have been done in convergence with different departments.

To strengthen the farm based livelihood the villagers are supported seeds, implements and trainings through the project. The farmers are supported for Papaya cultivation, Banana cultivation, floriculture, vegetable cultivation, hybrid beans cultivation and raising nutritional gardens. Similarly the farmers are supported for producing vermin compost, bio-farming and land development. The villagers are also facilitated to promote Mo Upakari Bagicha through government assistance. The Farmers are assisted for raising fruit orchards, pisciculture, poultry farming and agricultural plantation.

The SHGs are capacitated through regular trainings and orientations and facilitated for IGP planning, bank linkage and marketing. They are supported for taking different income generation activities like pisciculture, floriculture, Mushrooms farming, grocery shop, Leaf plate making, Preparation of Hand wash, dish wash and phenyl, small business operation, processing of NTFP products, Bamboo craft, rice and flour mill etc.



During the Corona pandemic period 2 SHGs had produced 5000 face masks and sold those in reasonable rate to the villagers. Other three SHGs had taken permit from the administration to provide ration at the doorstep of the villagers in lockdown period. They had continued the service for two

months and covered above 50 villages. The SHGs had also organised Corona awareness campaigns in village level to aware the villagers on corona prevention methods.



VSS and SHG meetings have been organised in the presence of villagers and forest officials on forest protection, forest cleaning, protection from forest fire, forest regeneration, wild life protection and other forest management activities. Similarly different soil and water conservation activities, boundary demarcation and marking, geo-tagging, fire line making activities have been done through joint forest management procedure in forest sections.

SWATI has organized Vana Mahotsava Week in villages, Malaria awareness campaign, Campaign on Beti Bachao Beti Padhao, Swachhata campaign, World Environment Day, National Nutrition Day, International Women's Day, SHG Product Mela, Campaign



on Mo Gelha Jhia, Mo Gaon re Tahasil etc in village and cluster level.

Similarly the Organisation has organized



regular Village meetings, VSS Executive body Meetings, SHG Meetings, training and orientation on different developmental subjects in all VSS villages.

The Organisation has distributed masks, sanitizers and shops among the villagers and also distributed posters and leaflets on Corona prevention and Corona vaccination drive in villages. The Organisation has also assisted dry food and other essential goods to the vulnerable families.

The villagers are engaged in MGNREGS works, forest based labour works and construction activities for income assurance during the pandemic period.





Impact

This initiative has organised the community to protect the natural forest through Joint Forest Management process and encouraged the villagers to strengthen their forest based livelihood through proper management and protection of forest.

The COVID assistance activities have provided job opportunity and income security to the villagers. Villagers have got employment through implementation of MGNREGA, construction works and plantation activities.

The Agricultural Developmental activities and assistances have increased the income level of families and given food and nutrition security to them.

The Income generation activities through women SHGs have given them the opportunity to increase in income, increase in saving, building relationship with block, bank and other institutions and boosting their



decision making power. Now the SHGs are representing in different platforms and participating in district and state level exhibitions.

The infrastructural development works like road, drinking water, electricity and other construction works have enriched the village life.

The Capacity building activities has strengthened the community based organisations and developed their awareness on different government provisions and citizen rights.

The Nutritional garden and Mo Upakari Bagicha activities have given food and nutritional security to the poor families during the pandemic period.

The forest based livelihood like leaf plate making, broom making, collection of NTFPs and forest foods have given a big support to the poor families during the pandemic period.





Millet Mission to Strengthen the Food and Nutrition Security of Tribal and Rural Poor

Project Background

Millets are climate-resilient and nutritionally equivalent or superior to most other cereals, making them a favourable crop to address the prevalence of malnutrition. The challenge to food production posed by climate aberrations has been seeing increased attention to reviving millet-based farming systems. The Tribal and Rural Poor have a long history of cultivation and consumption of Millets for their food, nutrition and also crop security. But gradually the dominance of rice and lack of support for millet processing and marketing have pulled these crops to the door of extinction. This process has not only created nutritional deficiency among the rural farmers but also disrupted their farming sovereignty.

To revive the millets, Odisha Millet Mission, a flagship programme called "Special Programme for Promotion of Millets in Tribal Areas" has been launched by Department of Agriculture & Farmers Empowerment, Odisha. Programme intends to revive millets in rain fed farming systems and household consumption. SWATI is implementing this programme in 12 grampanchayats -

Petapanga, Raikia, Mandakia, Beredakia, Dadingia, Sugadabadi, Gumamaha, Manikeswara, Karada, Badabaraba, Indragada and Ranaba of Raikia block in Kandhamal district. 8 of these Panchayats are situated in remote hill tracks.

Aim and Objectives of the Project

The main objective of this programme is to Increase household consumption of millets by about 25% to enhance household nutrition security, to promote millet processing enterprises at Gram Panchayats and Block Level, to improve productivity of millets crops and make them profitability and to develop millets enterprises and establishing market linkages to urban/rural markets with focus on women entrepreneurs.

Activities and Achievements of this Year

Total 1381 tribal farmers of 12 GPs have adopted Millet cultivation on their land in both Rabi and Kharif season. The farmers have cultivated finger millet in 356 hectares land, small millet in 113 hectares land, foxtail millet in 63 hectares land and pearl millet in 40 hectares land. The farmers have also adopted mix farming of millets in 45 hectares land.



The farmers have adopted scientific method of cultivation to increase their millet production. 364 farmers have adopted Systematic Millet Intensification method on their 145 hectares land and 432 farmers have adopted line transplantation method on 163 hectares land. 135 farmers have adopted line sowing method on 48 hectares land.

SWATI had organised regular orientation camps at Raikia, Indragada and Gumamaha. The Farmers are oriented on Systematic Millet Intensification method, Bio-fertiliser preparation and application, pest and disease management, seed selection and storage etc. The Farmers are also provided high yielding seeds with other agricultural inputs.

This year 1250.23 quintals of millet worth 41 lakh 20 thousand rupees has been procured from 511 farmers.

The farmers are linked with different departments and institutions for agricultural, climatic and marketing information. Above 500 farmers are linked with TDCC, 400 farmers with Direct benefit Transfer and 350 in Mobile App.

8 numbers farmers orientation camps has been organised at Raikia, Panganaju, Aanlapatta, Sunabarada and Tadingia village on Millet farming. Local agricultural officers, experts and PRI members had participated as resource person.

The Organisation has participated in Food festivals at district agricultural office and Gandhi Smruti Bhawan of Phulbani to promote and disseminate the food and nutritional value of millet based foods. It has also organised cluster level food festivals in community to create interest on different millet recipes among the villagers.

Impact

The corona pandemic has created a big threat to the livelihood of rural community. Due to month long lockdown and shutdown villagers lost all the sources of employment and income. The poor families faced food insecurity due to loss of income. But during this crisis the Millet crops have provided nutrition and food security to the farmers' families.



The procurement support by the organisation helped the farmers to get the reasonable price of their crops in pandemic period.

This process has encouraged the farmers to revive the millet based crops on their field and many farmers are interested to cultivate it in coming season.

The SMI method of millet cultivation has attracted the farmers and they have realized the increased quality and quantity of the crops through this method and also calculated the margin of benefits.



All the Millet farmers have produced 30 percent more crops in SMI farming system related to their traditional farming practice and more farmers are interested to cultivate this crop in coming season.

This process has also revived the traditional mixed cropping practice among the farmers. They have cultivated it with other traditional crops and got crop protection through this practice.

The revival of millet crops has brought returns the nutrition varieties in their food recipes and created encouragement among the women. The women members are influenced by food festivals taking interest to make different millet recipes at home.

The fallow lands are converted to millet farm lands and it generated more income and production.

Farmers have realised that millet farming is more profitable with less input and more reliable in crises period.

Farmer Producer Organisation

To enhance productivity through efficient, cost-effective and sustainable resource use and realize higher returns for their produce, through collective action, to create an enabling policy environment for investment in Farmers Producer Organisations and to leverage their Collective Marketing Power SWATI has promoted five Farmer Producer Organisations (FPO) in its working area. The FPOs are: Surgabhata Farmer Producer Organisation Ltd at Tumudibandha, Raikia Farmer Producer Organisation Ltd at Raikia, Gadabisara Farmer Producer Organisation Ltd at G.Udayagiri, Udyagi Farmer Producer Organisation Ltd at Gutingia and Hatishala Farmer Producer Organisation Ltd at K,Nuagaon of Kandhamal district.

All the five FPOs are registered and have increased their membership. The FPO members are oriented on Company management, Book keeping, Marketing and packaging methods. They are also linked with

different marketing agencies and financial institutions.

The FPOs have started procuring agricultural products from farmers and selling in larger market for better profit. They are also participating in different state and district level exhibitions to sale and exhibit their products.

The FPOs are informing the farmers on market rates, marketing strategies, processing and packaging techniques etc regularly. It is also organising orientation camps and interface programmes with agricultural officers, Bank officials and marketing agencies for farmers knowledge sharing.

During current year COVID situation, the FPOs helped the farmers to sell their products in reasonable rate. The Raikia FPO had facilitated in procuring millets and Surgabhata FPO had helped the farmers to sell the fruit during Corona lockdown.



Orchard based Livelihood NABARD WADI

Project Background

The Tribal Development Fund of the National Bank for Agriculture and Rural Development (NABARD) has promoted the development of WADIs for economic upliftment and social empowerment of marginalised tribal communities. The programme encompasses solutions that promote natural resource management, livelihood development and women's empowerment through people's participation. The wadi model is an agri-horti based sustainable livelihood model that makes farming profitable even on small farms. Its multi-tiered and inter-cropping approach helps ensure the nutritional security of the household by the provisioning of cereals, pulses, vegetables and fruits. The land and water management practices integral to the model lead to regeneration of the land and its productive potential. It reduces climate risks, improves farm productivity and ensures that farmers enjoy a regular flow of income due to diversification of production. The wadi model demonstrates tremendous potential as a pathway out of poverty for small and marginal farmers.

SWATI has been implementing this Orchard based Livelihood Programme WADI with the support of NABARD in Kutia Kandha villages of Belaghar, Bilamal and Gumma panchayats since 2014-15.

Aims and Objectives of the Project

This WADI model is a holistic approach addressing the food security, income security, land water management and increase in production through fruit orchard development. The project aimed to harness the potential of available land, water and human resources for enhancing livelihood opportunities for tribal families. The main objective of this programme is to give Livelihood and Income security to Poor tribal families from fruit bearing Orchard WADI. With this objective the programme also aimed to improve the standard of living of the families, developing unutilized and sloping lands into productive asset, Emphasis on sustainable farming practice, combining livelihood activities having different gestation period and improving the food and nutrition security through intercropping.

This programme also includes components like Water Resource management, Soil and water conservation, Drudgery reduction of women, Sustainable Agricultural Practice, Improved Agriculture, Cooperative Marketing and Integration of Landless.

Activities and Achievements

SWATI has promoted 725.5 Acres WADI of 789 Kutia kandha families covering 42 villages in 3 Belghar, Gumma and Bilamal Grampanchayat of Tumudibandha block. It has given support

for land development, pit digging, Fruit and border plant saplings, fertilizer and pesticide and field guidance to the farmers for raising WADI.



SWATI has been also given training to the farmers on pest management, water management, mulching, Compost and bio fertilizer preparation, intercropping etc. The Organisation has provided irrigation facility to WADI fields and supported seeds and agricultural implements for intercropping. To protect the WADI patches from stray animals the organisation has arranged Wire mesh fencing support in convergence with different Govt departments. SWATI has adopted in-situ soil conservation measures to arrest soil degradation and developed protective irrigation for fruit plants.

The farmers are supported Turmeric, Ginger, Potato, Niger and pulses seeds through convergence with line departments like Kutia Kandha Development Agency, District Agriculture Department, District Horticulture Mission and others for agricultural development. They are also supported for Minor Millet cultivation like, Maize, finger millet, Fox tail Millet, Little millet, Pearl millet and Tissue Culture Banana plantation in their WADI fields.

42 Udyana Vikash Samitis are formed in WADI villages to strengthen inter relationship

among the farmers. SWATI has also formed a Farmers Producers Company named Surgabhata Producers Company covering 400 WADI farmers for collective marketing of WADI products. 70 SHGs, 78 JLGs and 30 farmers club are formed in WADI villages.

The Organisation has provided improved farming techniques, capacity building trainings and exposures to farmers for plant protection and production enhancement. The Udyana Vikash Samiti members are oriented on intercropping, care of fruit bearing plants, fruit collection and storage etc.

The landless families are supported for Backyard poultry farming, small business and other skill based activities for livelihood enhancement.



The Wadi farmers are supported with Vermin Compost Pit construction, seeds and agricultural inputs for intercropping.

Land development activities and Chhanel renovation works are done through MGNREGA.

The women SHGs are given capacity building trainings on group dynamic, leadership, Bank linkage, thrift and credit and different income generation activities. They are also supported for poultry farming, agribusiness and vegetable farming.

The farmers have started producing mangos and other fruits from their WADI. Due to Corona lockdown the farmers could not send their fruits to city based markets and managed to sell in local markets.



Impact

725.5 Acres of fallow land are converted to fruit orchards and have given a sustainable source of livelihood to 789 farmers. The poor families who once could not afford to develop their lands, now own fruit orchards. Similarly the older and disable persons, those could not move outside villages for income, now find employment in own WADI fields.

Generally the Kutia kandha families depend on sifting cultivation for their survival and this initiative has minimised the dependency on sifting cultivation and checked the migration. It has also provided work and employment through intercropping and vegetable cultivation. Sifting cultivation has reduced to 50% among the WADI families. Similarly youth migration has reduced to 30% because of employment opportunity in agricultural and horticultural activities.

The intercropping Practice has revived the mix cropping practice and crop diversity in farmer's field. Cultivation of Millet crops, root varieties, oil seeds and leaf vegetables in the WADI field is giving equal profit and

protecting crop diversity like sifting cultivation.

Whole year vegetable intercropping in WADI patches is providing fresh and nutritious foods to the families and reducing women drudgery in kitchen management. It has also motivated the farmers for improved and seasonal vegetable cultivation and has given comfortable earning according to market demand.

The Farmers are organized and farmers to Farmers interaction and knowledge exchange processes have revived. The women farmers are organized in groups and accessed banking facility for income generation activities. Formation of Farmers Producers Company has given strength and marketing confidence among the farmers. The marketing strategy through FPO has increased the marketing skill and knowledge of farmers and the exploitation chain of business men has disrupted.



Now other departments like horticulture, KKDA and forest department are also following the success of WADI and promoting more plantation fields in the area.

During this COVID situation the WADI intercropping has given both food and nutrition security to farmers families.



Economic Development of Tribal Families through Focused Area Development Program (FADP)

Project Background

Focused Area Development Programme (FADP) is being implemented in the State ST & SC Development Department, Govt. of Odisha to ensure sustainable livelihood of ST families through land and non-land based livelihood activities, develop suitable infrastructure so as to improve the standard of living and facilitating incremental results in their livelihoods, develop backward & forward linkages and strengthening local institutions; improve the governance system in the tribal villages by strengthening the Community Institutions. The initiative is anchored on convergence with ITDA to plan & support livelihood enhancement projects by converging with various National & State programmes and external donors. SWATI is facilitating Focused Area Development Program (FADP) in 889 villages of 48 Gram panchayats in 3 Blocks of Phulbani ITDA Area covering 2017.61 square kilometre and 1,74,846 population, out of which the tribal population is 96,610. Similarly in 9 Blocks of

Baliguda ITDA Area covering 6511.54 square kilometer and 4,50,277 population, out of which the tribal population is 2,45,210.

Aims and Objectives of the Project

The main objective of this programme is Economic development of ST families through implementation of various livelihood enhancement projects with “Individual family/Group of families” as the target group. It has four major activities such as; Improved Agriculture, Horticulture, Animal Husbandry and Skill development of Tribal Youth.

Activities and Achievements

As Facilitating NGO SWATI has facilitated community mobilisation, programme arrangement, survey, identification & selection of beneficiaries for different activities, PRA, planning, participate in implementation process, post follow-up of implemented activities, handholding support to beneficiaries etc. SWATI has been also facilitating formation & promotion of CBOs

with special emphasis on WSHGs along-with their involvement in various locally feasible income generating activities for socio-economic empowerment.



Different activities like Plantation, Promotion of livelihood activities through SHGs, Agricultural developmental activities, Poultry development, Fishery Development, Bee Keeping, Skill development training and Placement Linkage are implemented through Phulbani and Baliguda ITDA for the sustainable economic development of the villagers.

For agricultural development 912 farmers have been supported for hybrid maize cultivation, 760 farmers for sweet corn, 100 families for cotton farming, 144 farmers for Basmati rice Cultivation, 96 families for finger millet, 269 farmers for sunflower cultivation in Baliguda ITDA area. Similarly farmers are supported for sweet corn cultivation in 200 acres land, Basmati rice in 130 acres land ground nut in 135 acres land, Arhar in 95 acres and sunflower in 250 acres land under Phulbani ITDA.

In Baliguda ITDA area 2814 farmers have been supported for cultivation of different vegetables like chilly, ladies finger, bitter guard, curly flower, cabbage, beans and brinjal etc in kharif season on their 1415 acres land. 2105 farmers have been supported for Rabi vegetable cultivation on their 1015 acres land. Similarly 3058 farmers have got support

for vegetable cultivation on their 741 acres land in Phulbani ITDA area.

719 families have been supported for poultry farming, 6 SHGs for mask stitching and selling, 3 SHGs for hill broom collection and selling in livelihood promotion support under Tikabali ITDA. Similarly 588 families have got support for poultry farming in Phulbani ITDA area.

Villagers have been provided job opportunity in village premises through MGNREGS during COVID period. 252439 man days have been created through MGNREGS in 9 blocks of Baliguda ITDA area.

16 Banadhan centres have been opened for storage, marketing and processing of NTFP products. Total 4938 women SHG members have been benefited from this. Godown buildings and drying yards have been constructed in all block area. A lemon grass oil mill has been established at Nuagaon for extraction of lemon grass oil.



Orchard based agricultural farm has been developed on 33.5 hectares of land through mission – 171 in Phulbani ITDA area. Farmers are supported for plantation and intercropping on those lands. Agricultural implements and seeds have been supported to 310 farmers. 3 check dams have been constructed for irrigation.

The Organisation has been organising Awareness building on different govt.

Schemes/ programmes, supply of safe drinking water to all families, literacy promotion, community health development, Natural Resource Management, employment/ self-employment generation for unemployed masses, capacity building of different groups on their working area concern, lobby & advocacy for food security & social security are the activities under taken by this institution along-with ITDA's planned activities.

To strengthen horticulture based livelihoods the farmers are supported for Horticulture Plantations and Maintenance, Wadi Plantation & Maintenance, intercropping and compost preparation in FADP villages of both ITDA.

The unemployed youths are sponsored in Placement linked employability training (PLET) and Skill Development Training (SDT) courses. They are sponsored for different life skill activities like Driving, Tailoring, Electrician, Electronics and ANM courses through different government skill development programs.



The farmers are encouraged for improved agricultural practice and trained on HYV seeds/ seedlings, line sowing, SRI cultivation, cropping seasonality, fertilisation, introduce of improved implements, seed purgation, techniques of ground water recharge etc.



Impact

This programme has provided income and employment security to poor families during COVID period. The returnee migrant families have got the income opportunity through MGNREGS and other labour intensive works.

The agriculture developmental activities have increased agricultural and Horticultural production, given employment and income opportunity for farmers and also provided food and nutrition security to the families.

The Plantation activities has provided a sustainable income source to the families, increased the fruit production in the area, encouraged the farmers for farm based cultivation and market based production and also created a green belt in villages.

The Women self-help groups have increased their income through different income generation activities and it has empowered them economically and socially.

The nonfarm livelihood opportunities have strengthened the income of landless and poor families. The placement linked employability training course has given employment opportunity to the unemployed youth of the area.



Health Service

Health service is one of the top most priorities in the context of social development and Right to Health is a part and parcel of Right to Life and therefore right to health is a fundamental right guaranteed to every citizen of the country. It plays an important role in human capital formation. Social development is about improving the well-being of every individual in society so they can reach their full potential. The United Nation has also given priority to this in its Sustainable Development goal no – 3 to ensure good health and well-being for all at all ages. Health Program of SWATI has evolved over the years as an important anchorage of its engagement with the community. During the initial years of Organization, it was confined to sensitization and awareness building and now it holds significance on account of its outreach and diversity. SWATI considers health as a major concern for the undeveloped area and poor community and the enjoyment of the highest attainable standard of health is one of the fundamental rights of every citizen.

SWATI has been implementing numbers of programmes with the support of State and Central government's Health department and non-governmental organisations to address the health needs of the area. In previous years, SWATI had implemented Malaria eradication Programme, Maternal Newborn Child Health and Nutrition (MNCHN) programme, V4 Sub-centre Programme, PEHCHAN for transgender community, Swacha Bharat Abhiyan and Community led Sanitation, Solid Liquid Waste Management and Vegi-cart in its project area. The Health Programmes of the Organisation at present are Maternity Waiting Home, Targeted Intervention Programme for AIDs awareness and treatment, Marriage No Child's Play (MNCP) to check the child marriage and to improve the adolescent health and awareness, Promote right for Adolescent & Children on Develop initiative programme (PRACDIP), Delivery Van and Bike Ambulance.

This year outbreak of COVID has drastically affected the basic health service and created acute health crisis in rural pockets. As local administrations focused on containing the spread of covid-19, it disrupted the basic health service including curtailed immunization schedules, restricted inpatient, outpatient and emergency treatment for infectious and non-communicable diseases, reduced laboratory investigations, and lowered access to maternal health treatment etc. Due to

transportation problem and unavailability of ambulance in lockdown period, the patients' especially pregnant women and aged patients faced lots of problem to reach the hospital. Many patients felt reluctant to go to medical fearing COVID test, disease infection and quarantine etc and infectious diseases such as cold, cough and fever began to spread as people hid their diseases. Due to lack of knowledge people did not care to follow the COVID guidelines in social distancing, wearing mask and hand washing etc. On the other hand many rumors on Corona frightened the villagers and they started to believe on that because of ignorance. Many people did not take interest to go to vaccination center listening the myths and rumors.

In this situation it is a big responsibility for SWATI to aware the villagers on Corona, facilitate them to access health facilities, provide Mask, sanitizer and other medicines and support them to overcome COVID problems.



COVID Response and Health Service

The World Health Organization (WHO) declared COVID-19, the disease caused by the novel coronavirus SARS-CoV-2, as a global pandemic on 11 March 2020. The pandemic quickly resulted in lockdowns and strong social (physical) distancing interventions around the world to reduce transmission of the virus. India implemented its own nationwide lockdown on 24 March 2020 and it extended till May 2020. After that it was replaced by a series of lockdowns of varying levels of restriction imposed throughout the country by national, state, and district

governments over the next several months. It helped in sustaining the health crisis but due to complete shutdown of all economic activities except essential services has created an economic crisis and peril misery for the poor, with massive job losses and rising food insecurity. The migrant workers returned back to the native villages but could not find any source of income in lockdown period. All these situations made the villagers physically, mentally, socially and economically weak and pushed to distress living.



This situation appeared as a big challenge for SWATI to solve. The Organisation took the responsibility and planned for COVID response activities. There were problems in entering the villages, resource mobilization and management of activities due to restriction and fear of corona infection. But SWATI bravely cooped with it through its workers, village committees, adolescent groups, SHGs, VSSs and other community based organizations. It undertook massive awareness campaigns to educate the public

on COVID-19, emphasizing the need for preventative measures to reduce the spread of the virus, such as social distancing, staying home as much as possible, frequent hand washing, avoiding touching one's face, and good respiratory hygiene, including wearing a face mask etc. It also helped the health personnels to reach the community and interior pockets. After the relaxation of COVID restriction the Organisation started some COVID response activities in villages.

COVID response activities By SWATI

Outreach (Coverage Area)

Total Staff/Volunteers engaged	Nos of Staff/Volunters	220
Total Blocks Covered	Nos of Blocks Covered	10
Total Villages Covered	Nos of Villages Covered	470
Total Households Covered	Nos of Households Covered	4500
Total Population Covered	Nos of Population Covered	16000

IEC Material Development and Awareness Generation on Covid-19

Covid Helpline Centres	No of Helpline Centres	1
Covid Awareness Information	No of Persons Covered	6070
IEC Materials Distribution	No of Persons Covered	5000
Handwash Campaign	No of Persons Covered	4000
Wall Paintings	No of Wall Paintings done	300



Support in Vaccination drive

Awareness Campaign on Vaccination	No of Persons covered	300
Covid Online Vaccination Registration	No of Persons Covered	120
Covid Vaccination Received	No of Persons Covered	76
NGOs Staff vaccination received	No of Persons Covered	170

Covid Care Centres support

Community Screening /Covid Tests	No of Persons covered	600
Home based management	No of Persons covered	300
Covid Care Centres	No of Centres Covered	1
Isolation Centres	No of Isolation Centres	1
Death Rituals support	No of Persons Covered	4

Hospital Support

Person Protective Equipment's (PPE)	No of Persons Covered	185
Oxygen Concentrator Support	No of Oxygen supported	21
Oximeters & Thermometers support	No of Oximeters supported	34
Support to Temporary Medical Camps	No of TMC supported	2

Food/Survival Kits Distribution

Establishment of Community Kitchen	No of Community Kitchen	2
Ready to Eat Meals	No of Meals supported	460
Survival (Ration) Kits	No of Households Covered	1800

Animal Care Support

Food supplied to Animals	No of Animals covered	800
---------------------------------	------------------------------	------------



Hygienic Kits Distribution

Face Mask Manufacturing Centres	No of Centres supported	8
Face Masks	No of Persons Covered	13200
Sanitary Napkins	No of Persons Covered	800
Hand Sanitizers	No of Persons Covered	1600
Soap's Support	No of Persons Covered	2600

Livelihoods Restoration

Farmers Seed Support	No of Households covered	900
Farmers Tools Support	No of Households Covered	200
Kitchen Garden Support	No of Persons Covered	600
Enterprise Seed Capital Support	No of Persons Covered	23
Leverage Resources from MGNREGA	No of Persons Covered	400

Migrants support

Direct Cash transfer	No of Persons Covered	23
Skills Mapped	No of Persons Covered	1400

Education support

Children Education	No of Children covered	1400
Digital Education	No of Persons covered	600
Education to Special students /PWDs	No of Special students covered	14
Audio Books Creation	No of audio books supported	20
Mobile Sets Distribution	No of Mobiles supported	1
Books Distribution	No of Books supported	600

Psychosocial and Counselling Support

Counselling Support	No of persons covered	220
Child marriage Stopped	No of Persons Covered	17
Domestic Violence cases addressed	No of Persons Covered	7
Elderly Care Support	No of Persons Covered	23

Rights and Entitlement's support

Pension Received	No of Persons Covered	14
Other Social security Schemes	No of Persons Covered	41
Identify Proofs (ID) created	No of Persons Covered	26

Other Creative Initiative's

Agriculture Information Centre	No of Persons Covered	5
Virtual Classes on Life Skills/Communication	No of persons covered	65
Digital Story telling sessions	No of persons covered	240
Quiz	No of persons covered	900

A mobile vending vehicle covered 4 blocks to sell vegetables, grocery at door step and also collect vegetables from small grower farmers for 27 days.

Facilities have been given to 112 pregnant women through bike Ambulance, Delivery van and Maternity Waiting home during lock down.

Seeds support to Promote 379 kitchen gardens for food and nutritional security during Lockdown.

Distribution of cooked food to destitute with free of cost for 17 days, Food provision for stray animals in 3 blocks for 7 Days

Volunteers support in 2 Covid Care Centres

Operation of KoBo Mobile application to assess migrants, Psycho social Counselling to 220 migrant families

Covid awareness through Mobile Vani program





Maternity waiting Home (MAA GRUHA) For safe and Institutional Delivery

Project Background

Most of the villages in Kandhamal district are situated in remote and inaccessible pockets, far away from government health facilities. Women living in those inaccessible villages of the district face enormous difficulties to reach hospitals for institutional delivery. They have to cross rough terrains, hills, and sometimes streams. Often they are carried in rope cots or slings. Establishment of Maternity waiting homes in remote and inaccessible areas has been one of the initiatives designed under National Rural Health Mission to increase institutional delivery so that maternal mortality as well as Neo Natal Mortality could be reduced. Maternity Home not only provides accommodation facility to the

pregnant mother days before the expected date of delivery but also health care services by trained health professionals and includes provisions of nutritious food for the pregnant mothers. It is a temporary home for expectant mothers where they can wait for safe delivery preferably 7 -10 days before EDD. On onset of labour, they are to be shifted to nearby health facility having at least Basic Emergency Obstetric Care facilities for delivery.

SWATI has been managing three maternity waiting Homes at Balandapada of Phiringia Block, Katringia of K.Nuagaon Block and at Tikabali of Tikabali block with the support of National Rural Health Mission of Government of Odisha. The outreach area of these Maternity homes cover above 20 Gram panchayats of three blocks.



Aim and Objectives

The Program is aimed at providing health care for safe and Institutional delivery in remote villages. The Objectives are - To establish alternative support infrastructure for addressing communication problems in difficult and inaccessible pockets for ensuring institutional delivery, to increase institutional delivery in the difficult and inaccessible pockets ultimately minimizing maternal & newborn mortality & morbidity, to change Knowledge, Attitude & Practice of rural people towards Maternal and Child Health care and to ensure 100% Institutional Delivery in remote and inaccessible pockets .

Activities and Achievements

Looking the COVID situation the workers of Maternity Waiting Home (Maa Gruha) had visited the villages and assured the pregnant mothers for safe delivery at Maternity Waiting Home. The MWH also arranged transportation of pregnant women during COVID lockdown. During this year 700 pregnant women have admitted in three MWH centers.

The centers have taken all protection measures to avoid COVID infection. The inmates are well oriented to practice prevention habits, provided face masks, sanitizer, PPE kits for health assistant and care takers, rearrangement of beds and sitting places to maintain social distancing,

preventives to avoid cold and fever, regular hand wash practice, room sanitizing in regular interval, provision of healthy and nutritious food etc have been provided in the center.

The Center has organized Mothers convention, Village discussions on Mother and Child health and food and nutrition camps in village level to enhance the awareness of the villagers on Mother and child care maintaining the COVID guideline.

The families of pregnant and neo-maternal have been supported for promotion of kitchen garden and Nutritional garden for food and nutrition security of pregnant mothers during lockdown.



The responsibility holders of the Maternity waiting Home have been able to build rapport with the government duty bearers (Doctor, Staff, Nurse, ANMs), grassroots health service providers (ASHA, AWWs) and the Community, Panchayatiraj Representatives and leaders of the CBOs like SHGs & GKSs, The Coordinator and the Attendants participate in ICDS sector meetings, ASHA sector meetings and VHND sessions. The Center has awarded Anganawadi and ASHA in Gandhi Jayanti for their achievement for mother and child care.

Cases of MWH Centers in 2020-21

Name of the Centre	No of Mother admitted	Total Pregnant Women	Inst. Delivery	Referred	Nature of delivery		Outcome		Having MCP Card
					Normal	cesarean	Live	still	
Balndapada	416	461	360	51	355	5	352	8	461
Katringia	200	296	169	71	157	12	165	4	296
Tikabali	164	223	153	45	139	15	152	2	223

Impact

During the COVID period when villagers were reluctant to go to medical fearing Corona infection and COVID taste, when people faced lots of problem to reach the medical because of lockdown, the Maternity Waiting Homes (Maa Gruha) have played a big role in institutional delivery service. Over 700 Pregnant women have got delivery facility through these homes.

Maternal mortality and Neo Natal Mortality has reduced 80% and Institutional delivery and referral cases have increased to 90%.

This programme has created confidence among pregnant mothers on institutional

delivery and increased their awareness level on pregnancy care and Neonatal care. It has also created awareness on medical facilities and government provisions on delivery among the villagers.

It has given motivation for not to believe blind beliefs, not to perform unhealthy rituals and not to depend on traditional healers and quacks for disease or delivery practice. This programme has also activated the village level health institutions, Anganawadi centers and Gaon Kalyana Samiti activities.

Assistance for raising nutritional garden has helped the pregnant mothers to consume nutritional foods during lockdown period.





Targeted Interventions (TI) for Prevention and care of HIV

Project Background

The problem of STI/HIV & AIDS poses a big challenge in terms of spread infection making the whole of human civilization vulnerable. Needless to mention, the spread of infection needs to be arrested so that the whole society and its economy are saved from its disastrous impact. Prevention of spread of infections in High Risk Behavior Groups and the general population is a major challenge. It is considered that the most effective means of reducing HIV spread is through implementation of Targeted Intervention Projects amongst persons most vulnerable to HIV/AIDS, such as FSWs, Transgender, IDUs, MSMs, truckers and migrants. Targeted Intervention has focused on sexuality minorities who practice risky sexual behavior, to prevent and control spread of HIV/AIDS among them and prevent spread through high risk groups to bridge population and general population.

Although Kandhamal district is a low prevalence district in the state, studies point out that there is a rapid increase in vulnerability of the population. Therefore, SWATI got a chance to come under the

umbrella of NACP-IV & had signed MOU with **OSACS** to contribute prevention of HIV/AIDS in implementing **Targeted Intervention Project** for the Female Sex Workers with overall objectives of NACP-IV i.e. to halt and reverse the epidemic in India by integrating programs for prevention, care, support & treatment. SWATI has been implementing the Programme since 2010 for core group of FSWs spread across five blocks i.e; Khajuripada, Phulbani, Phiringia, Tikabali and G.Udayagiri covering 418 female sex workers (home based – 346 and Street based – 72).

Aim and Objectives of the Program

Targeted interventions are aimed at offering prevention and care services to high risk populations (Female Sex Workers- FSW, Male having Sex with Male- MSM and Injecting Drug Users- IDUs) within communities by providing them with the information, means and skills they need to minimize HIV transmission and improving their access to care, support and treatment services. To prevent infection through saturation coverage of high- risk groups, provide care, support and treatment to PLHA, strengthen the infrastructure, system and human resources in

prevention, care, support and treatment programme and strengthen strategic information management system,



Under this Project SWATI has taken different program activities like: Condom Promotion (Promotion/Distribution of Condoms)-

Condom demonstration and distribution, Social Marketing and Establishment of Condom Outlet, Develop Inter-personal Behaviour Changes Communication, Community Mobilization and IEC activities, STI Clinic provisions of services for Sexually Transmitted Infections, Establishment of Drop-in Centres, Establishment of STI clinic and health camp organisation for Referral and linkage service, Linkage to Integrated Counselling and Testing Centres (ICTC), Creation of enabling environment (Advocacy for Enabling Environment and enrolling more and more TGs through counselling and mobilization).

Identified Key Populations

Block	Home Based	Street based	Total	High	Medium	Low	Total
Phulbani	75	05	80	09	56	15	80
Phiringia	63	16	79	20	51	08	79
Khajuripada	83	05	88	05	70	13	88
Tikabali	50	06	56	08	40	08	56
G. Udayagiri	96	19	115	14	90	11	115
Total	367	51	418	56	307	55	418

Activities and Achievements

Regular Meetings and discussions have been organized in all 18 hotspot zones on personal health care, Preventive measures of COVID, cause of HIV spread, advantage of Condom use, service delivery points, Problems faced by the Key Populations during clinical services etc.

During this year total 58,079 Nos. of free condoms has been distributed by Pear Educators and 436 Nos. sold through social marketing.

For behavior Change Communication SWATI has developed IEC materials in Odia language containing messages related to HIV/AIDS and Snake & Ladder Game to create awareness among the adolescent and youth on HIV/AIDS. It is helping the Key Populations to gain knowledge on HIV/AID during the play time. The materials are being distributed by the PE and outreach staffs during One to One session, One to Group Session, Focus Group discussion, Community events, Health camps, World AIDS Day, Vigilance week observation, International Women day, Exhibition etc. Regular counselling, awareness generation & knowledge building has been taken up at the outreach level to increase the level of

understanding on the routes of STI/HIV transmission and its relation to sexual practices by using BCC interventions among identified targeted population.

The Identified Key Populations were referred to ICTC-1 at DHH, Phulbani and FICTC at G.Udayagiri, Tikabali, Phiringia and Khajuripada for quality HIV testing and counselling

The Project has identified five PPP for scaling up the intervention through outreach level STI Clinic. All the PPP were government doctors and undergone training on SCM organized by

Testing Details in 2020-21

Types of Referral	Referred	Tested	Coverage Percentage (%)	Reactive/ Positive
RMC Visit	1624	1164	71.6	36
ICTC Testing	812	637	78.44	00
Syphilis Testing	812	637	78.44	00
TB Testing	477	29	6.07	00

SWATI in collaboration with District Administration has observed the World AIDS Day in the district headquarters Phulbani also at field level at Khajuripada, Phiringia, Tikabali and G.Udayagiri. The organization had also conducted Quiz Competitions for College students at Tikabali, Phiringia, Khajuripada, G.Udayagiri Colleges and distributed prizes to the winners.

During this period 5 No. of PPP clinics has established at Khajuripada, Phulbani, Phiringia, G.Udayagiri & Tikabali.

SWATI has organized 2 health camps in the outreach areas Kelapada of Phiringia and Dimirikhol of Khajuripada. The Organisation has also conducted awareness program on COVID, HIV/AIDS and TB in 18 hotspot zones.



OSACS. The Preferred Physicians are engaged for the treatment of the Key Populations & their partners.

The Organisation has organized “Vigilance Awareness Week” in five places to sensitize the Key Population along with general public to fight against the corruption. Ex-MLA, PRI members, Police personnel and govt. officials were participated in this program.

SWATI in collaboration with District Administration has observed the World AIDS Day in the district headquarter Phulbani and also field levels at Khajuripada, Phiringia, Tikabali and G.Udayagiri. SWATI had conducted Quiz Competitions for College students of Tikabali, Phiringia, Khajuripada, G.Udayagiri Colleges and distributed prizes to the winners in AIDs day function.

A Blood Donation Camp is organized at Bandhagada Office in collaboration with SAMBAD AMA ODISHA. The Organisation also participated in PMSMA in every month, observed World Toilet Day, Swatchhata Abhiyan Pakshya, Jatiya Surakhita Matrutwa Diwas and other health awareness programs conducted by District Health Department in time-to-time.

During the Corona Pandemic period the Organisation organized awareness camps on Corona prevention, distributed free masks to the key persons and promote kitchen garden for the families.

The Organisation has facilitated the key persons to get job through MGNREGS and other employment generation activities.

Impact

Due to COVID restriction the key persons had faced problems to maintain their families. The organisational assistance gave some relief to them. They got some income opportunity through MGNREGS and other works.

Due to the COVID awareness programme the key persons get knowledge on COVID and took the preventive measures to avoid the Corona infection.

Due to this intervention adoption of safe sexual practice measured in terms of increased in use of condom has increased, risk

level from high to low has reduced, the community understanding on sexual health and reproductive health, STI/RTI and accessing to clinical health service has increased.

The project has created an impressive impact towards checking the STI/HIV & AIDS infections in High Risk Behaviour Groups and the general population. It has created awareness and practice for Adoption of safe sexual practice measured in terms of increase in use of condom, increased understanding on the ways of that infection spreads, facilitated to accessing clinical health services and taken measures to reduce risk level from high to low.

The Project has also given an alternative income source to the Female Sex workers through different income generation trainings and facilitated to include in different social security schemes.

The project has organized the FSWs and given legal support and advocacy support to them, promoted their organization to fight for their rights and entitlements. The regular interaction, Orientation, counselling, clinical support and care by the organization have increased their self-confidence towards a healthy and purposeful life.

Due to this intervention 90% people know their status by diagnosis, 90% of people with HIV diagnosed and receive ART, 90% those of ART supersede viral load by 2020”.





Promote right for Adolescent & Children on Develop initiative programme (PRACDIP)

Project Background

The remote and in inaccessible pockets of Kandhamal district are more vulnerable in mother and child health care including high rate of IMR and malnutrition. NFHS data shows that in Phiringia Block of Kandhamal District, the underweight status of children among age group 0-6 year is 54% and underweight stunted (Growth in height per age) children percent is 53% and Wasted (Growth in weight per age) children% is 46%.

The data also shows only 78% women in Phiringia block are taking IFA during pregnancy. Colostrums feeding practice is 89% and 14% new born babies are given cow milk, package milk and honey water just after birth which leads to infection and later on it has impacts towards malnutrition. According to NFHS Exclusive Breast feeding status till 6 month is 74% for this reason also children

faces malnutrition in this age group. Status of institutional delivery in the area is 88% till now. So to improve the Community awareness and practice on Mother and Child health SWATI is implementing this Program. SWATI has initiated this programme from March 2019 in 4 GPs of Phiringia block i.e. Pahiraju, Kuermandu, Luising & Balandapada covering 75 villages and 3274 households with the support from Child Right and You (CRY).

Aim and Objectives

The main objectives of this programme are to reduce down the incidents of infant and maternal mother deaths in the project intervention, reduce the level of severe underweight and severely acute malnutrition children rate among the children at early age of 6 months to the 5 years from the selected villages and reduce down the rate of anaemia among the adolescents and the pregnant

mothers in the selected villages of the Phiringia Blocks of the Kandhamal district of the Odisha.



Activities and Achievements

COVID awareness campaigns have been organized in villages to aware the villagers and pregnant mothers on COVID and its prevention practices. The pregnant mothers have been provided Face Masks and sanitizers to avoid the Corona infection.

To address the Nutrition Issues the Organisation has organised Community sensitization meeting on need, means & ways of nutrition balanced diet for girls, mother and children, including healthy eating habits, Growth monitoring campaign, Support to SAM for linking to NRC, Orientation to AWWs on effective service delivery, Community Health training on ANC & PNC care, Orientation to SMC members on role and responsibility of VCPC and SMC members, Healthy Baby Competition and Facilitation in VHND Sessions.

The Organisation has facilitated the pregnant mothers to reach the health centre during Corona lockdown restriction. It has also provided seed support to the women groups for raising nutritional garden to avoid nutritional deficit during COVID period.

Activities taken on Community mobilization on institutional delivery preparedness, Joint meeting of mothers, parents, monitoring committees and AWW, Sensitization workshop with community leader, CBOs, PRIs on Access to primary health care, Felicitation Programme for mothers and service providers, Community meeting with mother and care givers on immunization, exclusive breastfeeding practices, food intake for pregnant mothers, ANC and PNC representatives, Facilitation in Immunization sessions, ICDS Sector meeting and G.P. MIS Meeting.



The Organisation has also organised District level sharing workshop on achievement and impact indicators of Health & Nutrition, Block level sharing workshop on different studies, Demand for New AWC, Demand for New Building of AWC, District Media interface on Health & Nutrition status, Advocacy Workshop at Block Level on availability of health care facilities at Sub-Centre and PHC involving BPM, CMO, Front line workers and elected, District level Interface on Health and Nutrition among children, Adolescent Convention on Stop Child marriage & arrest Malnutrition, Facilitation in ICDS Project meeting.

To improve the skill and knowledge of the stake holders the Organisation has delivered

Training to GKS members on preparation of village health plan Demonstration programme with ICDS on cooking of THR (Take home ration), TOT on life skill education, Capacity building of Stakeholders such as GKS members, ASHA, ANM and Anganwadi Workers and Training programme for adolescents on life skill education.



Parents of SAM & MAM children have received advice from service providers for better nutritional status and referred to NRC for increase their nutrition status. Anganawadi meetings have been organized for nutrition related events like THR demonstration, food demonstration and healthy baby competitions etc.

The Children and parents are mobilized to attend the VHND for counselling sessions on nutrition care. Village level meetings have been conducted with parents and children for increasing the attendance in schools and check drop out in schools. Meetings have been organised with mothers group to sensitize on exclusively breast feed, immunization, colostrums feeding and ICDS services.

Supports and Orientations have been given for Promotion of kitchen gardens in the house of Pregnant & lactating mothers, Adolescents

and 0-5 years of children for supplement the nutrition to address the malnutrition.

Adolescent groups have been formed and provided life skill education and reproductive health training. The groups are organized for prevention of child marriage issues.

Impact

It has created a good impact on Mother & child health and built a strong relationship between the ICDS and community.

The institutional delivery rate has increased. Pregnant mothers are taking Anganawadi workers consultation during pregnancy and lactation period. Immunisation of Pregnant women and children has regularised.

The adolescent girls are organised and empowered through trainings and exposures. The life skill education process and reproductive child health education has increased knowledge on health and future life.

Anganawadi activities and VHND camps are regularised. The attendance in VHND, Mothers meeting and Different committee has increased.

Traditional blind practices and restrictions on Pregnancy care, Delivery, breast feeding etc are rectified. Villagers reach to different health institutions have increased.

The Adolescent groups have actively participated in COVID awareness campaign and assisted the villagers.



BIKE Ambulance and Delivery Van



To resolve the health issues and to check the high rate of IMR & MMR in the district the Kandhamal district administration has been implementing different innovative programs like Delivery Van service, Bike ambulance and Janani Auto since 2018. To ensure the Institutional Delivery of the Pregnant Mothers in inaccessible areas of Kandhamal district and to provide Ambulance facility at the door step the district administration made facilities of special delivery vans equipped with all the facilities for a safe delivery. The van is equipped with all necessary instrument and equipments required for normal delivery, water facility, delivery table etc. with two SAB trained Staff Nurses to manage the cases. Similarly a bike fixed with a trolley is designed as Bike ambulance to carry the pregnant women from inaccessible villages to health centre.

SWATI is facilitating BIKE AMULANCE and Delivery Van services in Phiringia Block area with the support of National Health Mission, Kandhamal. This Bike Ambulance service is covering 73 village and 3078 household of 4 panchayats i.e. Sadingia, Panga, Sumarabandha and and providing service to

the villagers in free. This service is supporting in transportation of pregnant mothers and reducing the percentage of IMMR and MMR in the remote villages. This is also engaging in transporting sick persons/newborn children up to 5 year and emergency health care.

Similarly the Delivery Van service is covering the whole Phiringia Block with two staff nurses, two attendants and two drivers for on road delivery facility in Van.

This service has given a big support to the villagers in transporting the pregnant women and serious patients to the health centres during the COVID restriction time. During Corona lockdown all transport service were closed and villagers faced lots of problem to reach the hospital.



The ambulance service remained busy in carrying the COVID patients. The family members and villagers did not agree to carry the patients of pregnant women to medical fearing COVID infection and Corona test. Similarly it was risky to carry the pregnant woman by cycle or moter cycle in forest path. In this situation BIKE AMULANCE and Delivery Van services gave a big relief to them.

During this Corona Pandemic period total 50 pregnant mothers have got delivery facility through delivery Van. Out of them 7 critical cases were provided delivery facility in the Van and other 15 cases were transfer to district medical. 28 women were admitted in CHC for institutional delivery. Similarly 14

pregnant women, two sick children and an old man were transported through Bike Ambulance for health service. This uninterrupted ambulance service has provided a big assurance and support to the villagers of inaccessible area in Kandhamal district during this pandemic period.

Village Contact Drive on COVID and Malaria

The state Government has been implementing a Program DAMAN is an acronym for *Durgam Anchalare Malaria Nirakaran* (Malaria eradication in inaccessible areas) in Odisha, to combat the disease. Around 320 extremely remote and inaccessible villages in Kandhamal district has been identified under DAMAN for targeted intervention since 2018. It has been decided that a medical team along with local volunteers and peer leaders will reach these villages for malaria test and medical intervention, in case of need, during the monsoon months. SWATI has been facilitating the program in K.Nuagaon Block of Kandhamal District.

To create mass awareness on Malaria SWATI has organised Street Plays in interior villages. The street play group has sensitised the villagers on diseases through acting, folk dance and folk music and using songs and dialogues in local language KUI to explain the causes and prevention methods of the Malaria Disease. They have also informed the villagers about the medical facilities, government facilities and self-precautions to prevent Malaria. Leaflet, pushing cards with malaria messages and quotations with pictorial messages were distributed to the villagers in the Contact Drive Camps.

During the COVID period villagers of interior pockets could not get right information on

disease and believed the rumours. Villagers in some villages had started to perform puja to avoid Corona, in some villages started the healing process. Similarly in many villages, villagers were not taking appropriate preventive measures like maintaining social distance, use of mask and hand wash practice etc. So to aware the villagers SWATI had organised village contact drive on CORONA disease with the help of local community health centres in interior villages of K.Nuagaon, Phiringia and Tikabali block. Kasyapa Kamahi's folk dance group of Kasinipadar village had performed Binakar dance on CORONA awareness songs. The dance group provided information on Corona disease, motivated the villagers to strictly follow preventive measures and suggested to inform the village Anganawadi center, health centre, Panchayat office or SWATI in case of any problem.





WOMEN EMPOWERMENT AND EDUCATION

Gender role development is one of the most important areas of Community development. Gender and community development is a process towards sustainable way of community development incorporating all the gender with equal participation and involvement. Gender mainstreaming is the process of ensuring that women and men have equal access and control over resources, development benefits and decision-making, at all stages of the development process. It is the process of assessing the implications for women and men of any planned action, including legislation, policies or programmes, in all areas and at all levels. It is a strategy for making women's as well as men's concerns and experiences an integral dimension of the design, implementation, monitoring and evaluation of policies and programmes in all political, economic and societal spheres so that women and men benefit equally and inequality is not perpetuated. The ultimate goal is to achieve gender equality.

Women Empowerment for Gender Mainstreaming has been a major focussed area of SWATI's Intervention. SWATI addresses both practical and strategic gender needs in its community development initiatives making it a cross-cutting issue across all the programmatic interventions of the Organisation. Issues and concerns of the women are factored into all the sectoral interventions through a concerted effort to enhancing women's participation. Livelihood programme of the Organisation has specific focus on promotion of women livelihoods. NRM interventions have been spearheaded by community organisation with maximum representation of Women. Health Programme of the Organisation has unambiguous focus on addressing the unmet health needs of the women. SWATI has genderised its personnel policy, formulated workplace policy and formed Committee against sexual harassment. Women component analysis has been integrated into all the tools and techniques of the planning, monitoring and evaluation devised by the organisation.

Similarly SWATI has been given priority for education of the community to strengthen their knowledge base and their informed decision making ability. The Education objectives of the organisation is broadly divided into three parts i.e. Institutional education, Awareness building and informative education and Skill based education. In Institutional education, SWATI has opened a Study Centre under National Institute of Open Schooling (NIOS) to give the chance of higher study to the dropout students. Similarly SWATI has been running projects for Early Childhood Care and Education to create an environment for Children of 3-6 years have an opportunity for a quality preschool education. For Skill based Education the Organisation has been arranging regular trainings and orientations for skill development and facilitated the youth for technical and skill based trainings. To aware and educate the community people SWATI has been implementing awareness programmes on different government schemes, citizen rights and responsibilities. The Organisation has opened information centres and developed IEC materials such as leaflets, posters, handbooks and wall paintings for public education and dissemination of messages.



ANANYA: Marriage No Child's Play

Project Background

Child Marriage is an alarming situation in Odisha and the prevalence of the practice is wider in the tribal populated backward districts of the state. Kandhamal district is one among those districts where this practice prevails traditionally among the tribal and rural villagers. Acute poverty, Lack of education, awareness, skill based education

opportunity and traditional practices have forced the villagers to follow this illegal practices. Practice of child marriage is a violation of child rights, and creating a negative impact on physical growth, health, mental and emotional development, and education opportunities of the children. It is also affecting society as a whole since child marriage reinforces a cycle of poverty and perpetuates gender discrimination, illiteracy

and malnutrition as well as high infant and maternal mortality rates. So to stop this practice and to educate the community on bad effects of Child marriage SWATI has been implementing ANANYA Project in 11 Gram panchayats of K. Nuagaon Block of Kandhamal District since 2016 in association with Save the Children.



Aim and Objectives of the Project

The project is aimed at changing harmful cultural practices that normalize child marriage whilst providing girls with Sexual and Reproductive Health knowledge and access to the services they need to make informed health decisions. Young people are able to decide if and when to marry and pursue their Sexual and Reproductive Health and Rights (SRHR) in a supportive environment.

The major activities of the programme are to provide girls and their communities with the tools and knowledge to stop early and forced marriages and give girls a better start in life. Providing alternatives to child marriage and mitigating the impact on married girls. Enhancing access to income generating opportunities for girls and their families, providing financial literacy training for girls to

increase their ability and power in financial decision-making, Enhancing access to improved Child protection systems for girls at risk of child marriage and already married girls so that preventive and response measures can be taken, Increasing access to quality youth-friendly SRHR services (that are available, affordable, and acceptable and appropriate) for unmarried and married young people.

Activities and Achievement of this Year

To aware the villagers on COVID and its preventive measures, the Cluster Coordinators, Adolescent girls, DLs, Federation Members have created awareness through door to door visit and demonstrated hand washing practice, appropriate mask wearing techniques, social distancing practice etc. They have also done wall paintings and



posters on COVID to aware the people.

42 Nos. of regular meeting / sessions have been conducted by the GP level Federation members in two Clusters to refresh their knowledge on SRHR & Life skill knowledge, action plan on Covid-19 awareness. 288 federation members including adolescent girls have participated in those sessions.



Adolescents are engaged in NTFP business to generate their income during COVID. The adolescents above eighteen years are enlisted in Panchayat MGNREGA list. 133 new boys and girls members have applied and out of them 79 have got work through MGNREGS.

The Organisation has promoted 86 ward level COVID-19 management committee to combat the pandemic in all cluster as per government guidelines and oriented them to know about their role and responsibilities. They are also provided trainings and IEC materials on both COVID and child issues.

30 students had joined last year bridge course of project, 26 have been completed their 10th board examination.

During the lockdown period 2 adolescent girls were engaged in preparation of Rakhi for business purpose. They had prepared 150 nos of Rakhi using locally available resources and sold it in local markets.

Ministry of tribal affairs had launched a digitally enabled mentorship programme called GOAL (Going Online As Leader) for Scheduled Tribe youth. In this programme 99 adolescent girl and boys were registered as mentee.

To provide income opportunity to adolescents in COVID period the Organisation had given support to 55 adolescent HHs for Khariff

potato cultivation in project area. 3 adolescent girls from Bandaguda cluster have got part time engagement in survey work under Swacchha Bharat Mission in 1500 rupees remuneration. 5 deprived adolescent HH families have got work order for toilet construction from Gram Panchayat.

7 adolescent girls and federation member are registered for YuWaah Peoples Action Team (YPAT)s national level completion on 5 major themes. 5 adolescent groups have submitted different projects for YuWaah challenge.

10 nos of eligible and skilled adolescent girls were provided start up support. 1 hotel, 1 stationary shop, 4 tailoring, 1 Gotary farming and 3 Grocery Shop. 784 vulnerable families are provided relief (food basket and hygienic kit) in project intervention area.



National Doctor's Day was celebrated on 1st July in Shradha Clinic at Sarangagada and Nuagaon by adolescent girls and federation members to encourage doctors for their noble work during pandemic towards adolescents for continuous SRHR services.

World youth skill day was celebrated on 15th July in all the clusters. A skill exhibition and skill competition was organised among adolescents. 102 adolescents had participated in it. They had displayed different handmade



crafts using own innovative skills in this exhibition. On the same day a webinar was organised where 24 skilled adolescent were participated.

On the eve of World youth skill day an art Competition was organised by Tale of Humankind on different social themes. From our project area 26 adolescent girls and boys had participated and presented their skill in different themes. Out of them 5 were selected and got rank in top 20.

134 adolescents had participated in National Youth Day celebration in all clusters. A webinar was also organised on that same day in which most of the adolescents had participated and shared their views.

National Nutrition Month was celebrated in all clusters on 4 different themes. 682 adolescent girls, DLs, federation members, Pregnant & lactating mothers, frontline health workers had participated in it. Different competitions like; quiz, essay, sports, poster etc were organised to motivate and engage adolescent girls. On 24th September a webinar (Har ghar me sahi poshan) was organised where district

level government officials and doctors were participated and directly interacted with adolescent girls on nutrition.

A Media interface work shop was organised at Phulbani and many district level print and electronic media representatives had participated in it to share different issues on child marriage and to highlight these issues in media. 7 adolescent girls from different cluster had participated and shared key issues on child marriage & SRHR services.

On 29th September 2020 a community level awareness camp was organised at Letingia on child marriage issues with the support of legal aid department. Paralegal volunteer and counsellor TLSA, Balliguda was invited to create awareness on child marriage and free legal aid services. VCPC members, adolescent girls, DLs, federation members and villagers had actively participated in this camp.

Online application for PM Bal Kalyan (Jhulima Mallick) and PM Bal Shakti (Sarmilata Pradhan) Puraskar was submitted. The adolescents had submitted 11 online story and photo story for Girl Rising – My Story Competition. 110 adolescent boys and girls had participated in My School art competition.

The adolescents are provided health check-up and sexual reproductive health service through SHRADHA clinics.

Impact

The process has given strength to the adolescents to say no to their family members for marriage in child age and to take self-decision on their own marriage. It has given a platform to them to discuss and decide about their own future related to marriage, Education, employment and other social aspects. It has also freed them from family

pressure and burden on marriage and given scope to thinking independently to take decision about their marriage and future.



The Process has created awareness among the villagers about the adverse effect of Child marriage. Now they are well informed about the Social, Economic, Health and legal issues related to child marriage. The corporation of Traditional leaders, PRIs, Health workers, Child line members and Teachers in this process has created it more focused and influential.

The life skill development training programs have provided opportunities for engagement, Higher Education, Employment and income generation to adolescents. SWATI has extended higher education support to School dropout and those are at risk of child marriage. Similarly in support of ASRHR, SWATI has provided engagement and employment opportunity to educated adolescents those are at risk.

During the Pandemic period the Adolescent Group members have taken responsibility on community awareness building, motivation for Mask use, Hand wash, social distancing and arrangement of returnee migrants.

The skill based trainings has provided income opportunity to the adolescents during

lockdown period. Many girls and boys have prepared different crafts and increased their income by selling those in markets.

The Process has created many change makers in community and they are rewarded by state and national level institutions, Jhulima Mallick, the discussion leader of Ananya Girls Group of village Bandudi and Member of Block level federation has received the prestigious V-AWARD from UN House at New Delhi for her fearless work to end child marriage and promote education in her area.

Due to the active steps by the adolescent groups 65 Child marriage cases have been stopped and solved. The Training, Exposure and linkage of the process to different legal forums and administration has given strength and confidence to adolescents to fight for their right to education, self-decision on marriage and future.

The SHRADHA clinic facility has given health support and counselling to adolescents on different sexual health problems.

The Start-up supports has encouraged the girls to start own income generation activities and self-sufficiency. They are able to support the family during the lockdown crises.





Economic and Organisational Development of Women

SWATI has been given priority for Organisational Development and Economic Empowerment of women since its inception. Livelihood programme of the Organisation has specific focus on promotion of women livelihoods. NRM interventions have been spearheaded by community organisation with maximum representation of Women. It has promoted above 3000 Women Self help Groups through different activities and provided handholding support for income generation activities. In previous years, SWATI had implemented Deendayal Antyodaya Yojana-National Urban Livelihood Mission (DAY-NULM) program and promoted above 600 Women SHGs at Bhubaneswar, Behampur, Phulabani and Bouda municipal area. It had also formed 40 ward level federation and 30 cluster level federations in those areas. It has provided trainings and orientations on Book keeping, thrift and Credit, Bank linkage, IGP planning and income generation activities to all SHGs. Now above 140 SHGs are continuing different Income generation activities like Tailoring, Dry food business, Saree, Readymade garment, Grocery

shop, Phynaile making, Snacks making, Mudhi Mixture, Agarabati making, Spices and Masala Business, ladies corner, boutique, Napkin Business, Badi, pampad and pickles, decorative plastic flowers and road side vending. Similarly Now the SHGs and Federations are taking active role in different social activities and campaigns like COVID awareness, Swachha Bharat Mission, Anti liquor campaign, Anti dowry Campaign, Child marriage prevention campaign and taking responsibility of Jal Sathi, Bidyut Sathi etc.

The Organisation has also promoted above 500 Women SHGs in Ganjam district through





Odisha Forestry Sector Development Program. Similarly above 1500 Women SHGs are running their IGP activities through different programmes like WADI, FADP, Millet Mission and other livelihood based programmes. The Organisation has provided all supports for financial linkage, IGP planning and to take different Income Generation Activities.

The Organisation has also promoted 115 adolescent girl groups in 11 GPs of K.Nuagaon block through MNCP project. The Organization has trained them on Supply Chain Management Financial education, Entrepreneur Development and life skills.

Start-up supports have been given to them for income generation and entrepreneurship. During the COVID period the Women SHGs had taken lead role in community awareness and COVID response activities. SHGs in Phulbani and Bhubaneswar had distributed free meals to the destitute and migrant persons in lockdown period. Many SHGs had prepared face masks and sold it in community in reasonable rates. 3 SHGs of Bhanjanagar area had operated doorstep ration vegetable supply service in villages. The adolescent groups had provided teaching service to the children in villages.

National Institute of Open Schooling (NIOS)

SWATI has established a Study Center under National Institute of Open Schooling (NIOS) at Bandhagada helping the dropout children gain access to formal education since 2011. In 2006-07 when the organization had joined with FVTRS through skill development programmes, it had surveyed to find out the percentage of dropouts and planed to enroll them for higher education and education. In 2011 FVTRS started support to SWATI for opening the National Institute of Open Schooling (NIOS) center at Bandhagada accredited as AI-AVI-SLEID. Now NIOS is

providing supports for Offline enrollment, registration for examination, study material distribution, personal contact programmes and conduct practical examination for Dropouts through Study center. .

NIOS is trying to create a friendly environment between student and facilitators for an easy learning process through different workshops and training programmes and trying to contact directly with the learners for smooth communication by issuing ID card till getting their certificate.



Back to Basic

Early Childhood Care and Education for Tribal children

The children in remote tribal pockets of Kandhamal district are neglected in Early Childhood Care and quality Child Education. Though ICDS project and Anganawadi centers are providing some solutions for this, it is not sufficient. Still there are many problems like lack of infrastructural development and community awareness, poverty, lack of community importance on child education and many other causes. So to create a healthy educational environment and to provide opportunity for children from the most marginalised communities SWATI is implementing Back to Basic programme in Tikabali and Raikia block of Kandhamal district.

SWATI is implementing this programme in 11 GPs of Tikabali and 2 GPs of Raikia block covering 75 schools and 164 Anganawadi centres. Total 2088 children under 3 years age

2195 children of 3 to 6 year age and 8513 children from 6 to 18 age group are treated through this programme.

Aim and Objectives

The objectives of the programme are – To create an environment for preschool going children for a quality preschool education and better preparation to be school ready and to reach their full potential, Increase access to a child-friendly learning environment in state run preschools (Anganwadi Centres) and ensure a smooth transition to primary schools, Enhancement of the capacity of ICDS workers and early grade school teachers to provide caring, stimulating and healthy learning environments for children and engage with government and other relevant stakeholders to prioritise pre-school education with evidence based research on the impact of quality early education.



Activities and Achievements of this year

Covid-19 Awareness

Awareness building for community people on COVID was main focus in first quarter of the year. Because of COVID restriction Project staffs had built contact through telephone with different stake holders like parent, children, PRI members and member of Matru Committee, Janch Committee and SMC members and given tips on COVID preventive methods. To intensify the process SWATI initiated hand washing demonstration and telephonic Covid Quiz programme. Stakeholders, Committee members of AWC & SMC and students took active participation and got appreciation prizes. Soap, sanitizer and masks have been given as prizes.

Collection of Base Line information & Capacity Building of Project Staffs

Base line information like children in AWC & School, Village profile & members of MC/JC/SMC have been collected and documented. Organisation head and Project Coordinator had attended National Level Project Roll out program at Puri and discussed project objective and out come to project staff. During Lock down period, project staff

had worked from home. Virtual trainings and orientations have been provided to build their capacity in writing small stories, song, translation work and study material preparation etc.

Door step education

Due to COVID the Schools & AWCs have been closed and the Children missed the direct guidance of AWW or Teacher. So to provide educational support to the children door step education started from 2nd week of May and it continued with the direct involvement of ASF and village volunteers.

The Organisation also supported ICDS initiatives to transfer knowledge on new Arunima at door step, basic and book courses delivery for primary school and actively implemented Govt. programs like Sikhya Sanjog, Dikhya, Reading Days and connected more children with it.



ELM Video

To strengthen the Virtual Learning process SWATI developed small educational videos with children, parent and care givers on 4 domains & 10 skills. Local circumstances and resources were given importance during script preparation. The videos were circulated through internet and mobile phones and the

parents having smart phone downloaded it. Where there was not phone facility the workers shown at doorstep through Laptop and mobiles. Children have shown big interest to watch the videos and to learn from this. It has largely motivated parent too. Around 61 videos have been developed and the process is still continuing.



TLM Preparation

Project team has prepared different Teaching and Learning materials at their home in lockdown period using own expertise and idea. These material are placed in Anganawadi centers and the children are using in learning process. It is attracting and creating interest in learning habit of children. Around 62 types of TLM have been prepared by the project team. A district level TLM Exhibition was organized before National Lock down at Phulbani.

Observation of ECCE Day, Girl Child Day and International Women's Day

Early Childhood Care and Education day was observed in Back to Basic areas with ICDS functionaries and Introduced activity based learning with children. Important days like Girl child day, International Women's Day & Yoga Days have been observed with participation of stakeholders and children.

Promotion of Kitchen garden (Institution & Individual level) and MGNREGA Awareness

The Organisation has given support to promote kitchen gardens in the households of Pregnant & Lactate mother, SAM & MAM child at individual level and facilitated to develop kitchen gardens at AWC & School level. Seasonal vegetable and other seeds have been distributed to interested households as COVID response support to address malnutrition.

Due to Lockdown many wage earner households lost their employment and stayed home without any income. The children were lived in distress because of income stress of their parents. The Organisation motivated them to apply for work in MGNREGS and other employment assurance programmes of Government. Due to regular awareness people are applying and getting work near to village.



Dada Dadi & Nana Nani Campaign

For the safety of grandparents and older persons in the family a nationwide campaign based awareness program Dada Dadi & Nana Nani has been initiated by NITI Ayog in aspiration districts. The Organisation had organised this campaign in Back to Basic area. Total 43 No's awareness programs had been organised in the area by ASFs and where 349 Participants among which Male-151, Female-

198 were participated. Mostly grandfather and grandmother with their grand children were participated. This programme has motivated to establish a meaningful and learning based relationship between Grandparents and grand children.



Impact

This process has encouraged the parents, AWWs and teachers to give importance on early childhood care and education and attracted the children to centers and schools. It has helped the children in home based learning during the intuitional shutdown in COVID period.

Learning through the ELM videos and Teaching and Learning materials has encouraged the children to give attention on study at home. The Videos based on local script and role by local villagers have created attraction and influence among the children and villagers.

Promotion of Kichen garden has helped the households to meet their daily vegetable needs and nutritional need of children in COVID crises period.

Facilitation support in employment security has helped the household to get job through MGRGECS and other job assurance programmes in locality.

Dada Dadi & Nana Nani programme has encouraged establishing a meaningful and learning based relationship between Grandparents and grand children. It has helped in neutralizing the mental stress of the older persons during pandemic and provided opportunity of increase in innovative idea among the children.



STUDY RESEARCH AND DOCUMENTATION



SWATI believes that Good documentation and communication are crucial for creating a favourable environment for the programme/project in the organization and the community. Holistically, it goes beyond the rhetoric of routine reporting on programmes and activities. Documentation of success stories, innovative experiments facilitate intensive learning, training, advocacy, programme planning, public relations, review and sharpening of goal and vision of implementing organization. With the broadening and deepening of the developmental interventions SWATI has enriched its internal as well as external documentation. It prepares quarterly, half yearly reports and publishes Annual report of the organization.

SWATI has published many books on different themes and success interventions. It has

published “Eei Matira Katha” on Livelihood, “Jibanadhara” on Health, Ananya on Child marriage prevention and Ankur on Child education initiative. SWATI has also published posters, brochures and leaflets on MNREGS, FRA and PESA, Malaria, AIDs, Environment and Swachha Bharat Abhiyan. SWATI has published hand books on Jangala Jami Adhikar (Odia), developed and distributed public education materials on MGNREGS, Mother and Child health and Women rights.

This year SWATI has published the case story Book Corona Kalara Katha, which elaborates the initiative of organisation and community for prevention of COVID impact.

SWATI has prepared Audio Visual Documentary on MGNREGS, Agriculture, DBI, Tribal Development, WADI, Hydro Project, Maternal Newborn Child health and Nutrition and Malaria. SWATI has also developed an audio CD on different development themes. To educate the villagers and to disseminate information SWATI has opened panchayat level information centers and public library at Paburia, Bandhagada and Phulbani.



The Organisation has also its own website: www.swatiodisha.org with all updates of its programmes, activities, reports and information.

Panchayati Raj and Governance



Governance is wider than government which ensures the responsibility and accountability of various communities i.e. government and the civil society. For the upliftment of rural communities there is an esurience of delivering better service by using information technology and giving better quality of life at grass roots. For this there is a need to strengthen democracy through good governance. So SWATI has been always given importance to strengthen the community empowerment processes in its projects and activities. SWATI has been promoted different community based organisations and given them orientation to act for community rights and interest. It has been implementing PRI, Good Governance and Social Justice programmes to empower, educate, aware and organise the community enabling them to access their citizen rights and government programmes and schemes and to participate actively in governance process.

Under this initiative SWATI has strived to strengthen the structure, system and procedures of governance imparting capacity building trainings to PRI members, sensitization, Knowledge and skill building of the community and handholding support for realization of rights and entitlements are the mandates of the initiative. Constant

endeavour in strengthening community based organisations and networking of CBOs to create a pressure group and facilitation of planning and its execution has impacted the lives and livelihoods of the partner community.

Due to this initiative community participation especially women participation in panchayatiraj system has increased a lot. Villagers have gained knowledge on different schemes and programmes of the government and RTI and other constitutional rights. The community organisation process has empowered them to execute their citizen's right and to guide the development programmes in village level.

Formation and Strengthening of CBOs

The Community based Organisations promoted by SWATI are playing vital role in Local self-Governance. The SHGs, Farmers groups and Village Development Committees are acting as pressure groups in implementation of developmental programs at village level. The capacity building trainings given by the Organisation have increased the awareness and information level of the community people on different government provisions and schemes. It has enabled them to participate actively in Gramsabha decisions, village level program planning, beneficiary selection for different social security programmes and guiding the implementation work. The youth mobilisation initiative by the organisation has opened the possibility of emerging good leadership among the young mass.

Advocacy and Awareness

SWATI has been taken many advocacy steps to safeguard the community and citizen rights. It has also implemented many programmes to strengthen the community demands, Right to information, Forest land Right, MGNREGA right, women right and Child right etc. It has been arranging regular interface of professionals, law makers, administrative persons, civil society organisations and media persons on different issues. All these initiatives have empowered the community people to fight for their justice.

The Organisation has also taken steps to aware the community on their constitutional, Economic and survival Rights through hand books, leaflets, VDO shows and conventions. During the time of election it has created awareness on peoples voting right among the

community. Similarly it has been arranging campaigns on MGNREGA, Forest land right, Educational right, Food security and child protection right.

Social watch monitoring

To collect data and to monitor poverty eradication and gender equality process in community the Organisation has developed its own mechanism in association with community leaders, SHG leaders and village youth. It has strengthening the coping mechanisms and facilitating government provisions to eradicate poverty. Similarly it has been given importance on women empowerment, women economic growth and leadership strengthening to break the gender description process in the community.

AN APPEAL

SWATI, a non-governmental voluntary organization has been working since 1997 in the field of Tribal and Rural development. Its initial engagement in the Natural Resource Development has broadened its programme and activities as well as its perspective helping its take a holistic approach of the lives and livelihood. The present shift has been towards adoption of the livelihood approach rather than a sectoral approach to resource management.

Not only there has been adoption of a holistic perspective, the interventions during these years have established models for propagation and replication. SWATI has planned for further diversification of its activities in the coming days. Keeping in mind the recent change in the society; SWATI has planned to establish an Old Age Home and a Shelter for Homeless Children. Its modalities will be worked out further, once the idea gets across and the individuals and organizations build partnership with SWATI for the cause.

SWATI solicits donations from individuals as well as organizations to contribute for the noble cause. The Organization has been registered under 80G for the donor and contribution to get exemption as per the provision under Income Tax Act.

At the same time SWATI pledges to remain accountable to the donor and contributors and promises to take all the measures for effective utilization of the funds so that the noble cause for which the contribution made is realized.

STATUTORY INFORMATION

Statutory Auditor	:	M/s. Anil Patro & Associates, Bhubaneswar
Internal Auditor	:	Dharani and Company, Bhubaneswar
Legal Advisor	:	Adv. Ratikanta Mohapatra, Bhubaneswar
Bankers	:	State Bank of India, Paburia/Gutingia/Sarangada/ G.Udaygiri/ Phulbani/Tumudibandha, Berhampur ADB, G.Udaygiri, UGB Phulbani/Belaghar, Andhra Bank, Gosani Nuagaon, Podamari
Public Information Officer	:	Er. Hari Sankar Rout, Secretary, SWATI
First Appellate Authority	:	Prasanta Satapathy, Chairman, SWATI

GOVERNANCE				HUMAN RESOURCE PROFILE				
Category	Male	Female	Total	Level	Male	Female	TG	Total
GB Member	4	3	7	<5000	22	21		39
General Body Member	7	4	11	<10000	29	15	2	41
Full time staff	52	47	99	<15000	8	6		13
Part Time staff	9	6	15	<20000	7	3		8
Total	72	60	132	>20000	4			2
				Total	70	45	2	103

SWATI GOVERNING BODY & GENERAL BODY MEMBERS

Board member's Name	Address	Gender	Position in the Board
Mr Prasant Satapathy	Plot no – 219/1386/2632,Bhubaneswar - 751001, Dist: Khurda, Odisha Mob – 9437242872, E-mail: prasantasatapathy@gmail.com	Male	Chairman
Mrs. Rasmirekha Khatua	At – Nadikhandi Sahi, PO – Phulbani – 762001, Dist – Kondhamal, Odisha, Mob – 9438061108, E-mail: bnkhatua@rediffmail.com	Female	Vice- Chairperson
Er. Hari Sankar Rout	At – Pradhan Colony, PO – G.Udayagiri– 762100, Dist – Kondhamal, Odisha. Mob – 9437186128, E-mail: swati_pab@yahoo.co.in	Male	Secretary
Mr. Santanu Kumar Mishra	At – Amala pada, PO – Phulbani – 762001, Dist – Kondhamal, Mob – 9437192365, E-mail: paribes_plb96@rediffmail.com	Male	Treasurer
Mrs. Premasi Nayak	District Programme Officer, OLM, Dhenkanal, Mob - 9437359381	Female	G.B Member
Mrs. Sujata Mohapatra	K-4, LIG - 744, Kalinga Nagar, Po – Patrapada, Bhubaneswar - 751019, Dist: Khurda, Odisha, Mob – 9861732858, E-mail- Sujjiosam@gmail.com	Female	G.B Member
Mr. Prasanta Kumar Mishra	At /PO – Tikabali, Dist – Kondhamal Odisha- 762010. Mob - 9437765167	Male	G.B Member
Mrs. Santana Nayak	At – Nuasahi, PO – G.Udayagiri– 762100, Dist – Kondhamal, Odisha, Mob - 9438043680	Female	General Member
Mr. Lal Nanda Pradhan	At /PO – Paderi pada, Tala Dandikia, Via – Bandhagada, Dist – Kondhamal , Odisha, Mob - 9439267104	Male	General Member
MrJimuta Prasad Mishra	MIG- 2, 27/1, OSHB Colony, Chandrasekharpur Bhubaneswar, Dist – Khurda, Odisha, Mob - 9337103930 , E-jimutamishra@gmail.com	Male	General Member
Mr.Prasanta Kumar Das	At – Nuasahi, PO – G.Udayagiri– 762100, Dist – Kondhamal, Odisha, Mob – 7750009500, E-mail – tukuonly@gmail.com	Male	General Member

M/s S C P & Co

Chartered Accountants

House No 2, Plot No 698, Jayadurga Nagar,
Cuttack Road, Bhubaneswar, Dist: Khurda, Orissa, PIN 751006
M 9861146812, 7008986036. E mail: anil2patro@yahoo.com

AUDITORS' REPORT

We have audited the attached Balance Sheet of **Social Welfare Agency & Training Institute (SWATI) At Trinath Temple Street, Po Gosaninuagaon, Berhampur, Dist Ganjam, Orissa 760 003** as at 31st March 2021, also the Income & Expenditure Account for the year ended on that date, annexed thereto and reports as follows:

These financial statements are the responsibility of the entities management. Our responsibility is to express an opinion on these financial statements based on our audit.

We conducted our audit in accordance with Auditing Standards generally accepted in India. Those Standards require that we plan and perform the audit to obtain reasonable assurance whether the financial statements are free of material misstatement. An audit includes examining, on a test basis, evidence supporting the amounts and disclosures in the financial statements. An audit also includes assessing the accounting principles used and significant estimates made by management, as well as evaluating the overall financial statement presentation. We believe that our audit provides a reasonable basis for our opinion.

1. We have obtained all the information and explanation, which to the best of our knowledge were necessary for the purpose of our audit ;
2. In our opinion proper books of account as required by law have been kept by the organization so far as appears from our examination of the books;
3. The Balance Sheet, the Income & Expenditure Account dealt with by this report are in agreement with the books of accounts;
4. In our opinion and to the best of our information and according to the explanations given to us the financial statements read with annexed notes on accounts gives a true and fair view in conformity with the accounting principles generally accepted in India.
 - a. In the case of the Balance sheet of the state of affairs of the above named organization as at 31st, March 2021.
 - b. In the case of the Income & Expenditure, the excess of income over expenditure of the organisation for the year ended on that date,

Place : Bhubaneswar
Date : 25.10.2021



For SCP & Co.
Chartered Accountants
Firm Reg. No. 324601E


P ANIL KUMAR PATRO
Partner
M. No. 208848

Social Welfare Agency & Training Institute (SWATI)
Regd. Office At: Trinath Temple Street, PO: Gosaninuagaon, Dist: Ganjam, Pin:760003, Odisha.
Project Office: At/Po: Paburia, Dist: Kandhamal- 762112 (Odisha)

Consolidated Income & Expenditure Account for the Period from 01.04.2020 to 31.03.2021

Expenses		Amount (Rs)	Amount(Rs)	Income		Amount (Rs)	Amount (Rs)
To	Project Expenses (Annexure-I)			By	Grants-in-Aid (Annexure-IV)		
	MNCP	13,36,196.00			P.Y. UU Grant: Utilized		
	Back to Basics- SC, Italy	22,80,040.00			TI-FSW, Phulbani	79,020.50	
	PRACDIP- 2021 (CRY-AM)	3,95,271.00			Millet Promotion	10,90,337.00	
	PRACDIP-2020 (CRY-Kol)	10,10,284.00			Management of Maternity Waiting Home	74,600.00	
	PRACDIP-2021 (CRY-AM)	3,67,840.00			WADI (Adm)	100.00	
	COVID-19 DR (OTG)	<u>1,53,438.00</u>	55,43,069.00		FADP, Phulbani	63,500.00	
	WADI (Project)	10,14,677.00			FADP, Balliguda	16,757.00	
	Delivery Van	8,06,304.50			NULM	3,54,327.00	
	Bike Ambulance	1,10,593.50			OFSDP (Muzagada)	93,100.00	
	TI- FSW, Phulbani	12,47,748.50			OFSDP (Jagannathprasad)	1,86,200.00	
	Mgt. Waiting Home, Balandapada	12,69,612.52			FPO Promotion	1,012.25	
	FADP, Balliguda	14,67,500.00			Bike Ambulance	6,271.50	
	FADP, Phulbani	3,90,000.00			Delivery Van	4,918.00	
	DBI, SDTT, Mumbai	5,32,159.36			MNCP	64,142.50	
	NULM	3,28,442.00			Back to Basics-SC, Italy	1,21,782.00	
	OFSDP (Muzagada)	11,27,500.00			PRACDIP-2020 (CRY-Kolkata)	<u>1,28,589.00</u>	22,84,656.75
	OFSDP (Jagannathprasad)	11,40,000.00			C.Y. Grant: Utilized		
	OFSDP (Central)	5,45,000.00			TI-FSW, Phulbani	11,68,639.50	
	OFSDP (Tarsing)	3,08,779.00			Management of Maternity Waiting Home	12,05,966.52	
	Millet Promotion	10,90,956.50			WADI Development (Proj)	9,81,861.00	
	FPO Promotion	7,77,900.50			WADI (Adm)	50,900.00	
	E-Library	4,76,400.00			FADP, Phulbani	3,26,500.00	
	AVI/SSEID- NIOS	2,475.00			FADP, Balliguda	14,47,500.00	
	Role of GP in Health & Nutrition (SIRD)	1,42,700.00			DBI, SDTT, Mumbai	5,44,567.36	
	Maternity Waiting Home, Tikabali	11,27,889.50			NULM	1,14,515.00	
To	Maternity Waiting Home, Katringia	11,83,444.00			E-Library	4,44,000.00	
	Sweekruti	45,845.00			OFSDP (Muzagada)	9,63,850.00	
	WADI (Adm)	<u>51,000.00</u>	1,51,86,926.88	By	OFSDP (Jagannathprasad)	9,48,388.00	
To	SWATI General Expenses				OFSDP (Central)	5,54,157.00	
	Program Expenses	3,36,528.00			OFSDP (Tarsing)	3,12,922.00	
	Administrative Expenses	<u>17,27,150.68</u>	20,63,678.68		FPO Promotion	7,76,888.25	
To	General (FC) Expenses				Bike Ambulance	1,04,322.00	
	Office Expenses	51.00			AVI/SSEID-NIOS	2,475.00	
	Bank Charges	<u>356.36</u>	407.36		Delivery Van	8,01,386.50	
To	Kandhamal Science Park	<u>1,24,748.80</u>	1,24,748.80		Role of GP in Health & Nutrition	1,42,700.00	
To	Varietal Improvement Potato	<u>2,80,344.00</u>	2,80,344.00		Sweekruti	45,845.00	
To	Write-off: Loan to IC Projects	3,92,283.25	3,92,283.25		Mgt. Of Maternity WH, Katringia	13,35,387.00	
To	Write-off: OTELP Plus-Grant Rec.	<u>1,806.00</u>	1,806.00		Mgt. Of Maternity WH, Tikabali	12,78,728.50	
					MNCP	11,84,887.00	
					Back to Basics-SC, Italy	21,50,043.00	
					PRACDIP-2021 (CRY-AM)	3,95,271.00	
					PRACDIP-2020 (CRY-Kolkata)	8,77,100.00	
					PRACDIP-2021 (CRY-AM)	3,67,840.00	
					COVID-19 DR (OTG)	<u>1,53,300.00</u>	1,86,79,939.63
				By	Other Receipts (Annex- I)		
					Bank Interest		
					MNCP	9,281.00	
					Back to Basics	7,946.00	
					PRACDIP-2020 (CRY-Kol)	4,595.00	
					COVID-19 DR (OTG)	<u>138.00</u>	21,960.00
					WADI (Project)	4,371.00	
					TI-FSW, Phulbani	2,558.00	
					MWH, Balandapada	7,312.00	
					Millet Promotion	33,878.00	
					Maternity Waiting Home, Tikabali	8,617.00	
					Maternity Waiting Home, Katringia	<u>11,985.00</u>	68,721.00
					Staff Development	11,765.00	
					Corpus Fund	<u>2,946.00</u>	14,711.00



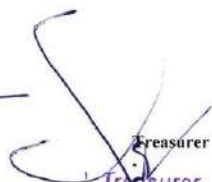
				<u>Interest on Fixed Deposit</u>		
				Staff Development	96,538.00	
				Corpus Fund	<u>38,839.00</u>	1,35,377.00
				By Payment Reversed (WADI Proj)	<u>32,700.00</u>	32,700.00
				By NGO Service Charges (E-Library)	<u>32,400.00</u>	32,400.00
				By <u>SWATI General Income</u>		
				Bank Interest	84,662.00	
				Other Receipts	15,30,452.00	
				Miscellaneous Receipts	<u>23,38,497.00</u>	
				Donations & Contributions (Bolero)	10,49,016.00	
				Interest on Fixed Deposit	27,621.00	
				Membership Fees- Board Members	<u>11,000.00</u>	50,41,248.00
				By <u>General (FC) Income</u>		
				Bank Interest	15,205.00	
				Misc. Receipts	32,050.00	
				Interest on FD	<u>33,698.00</u>	80,953.00
				By Kandhamal Science Park	<u>5,775.00</u>	5,775.00
				By Varietal Improvement Potato	<u>2,00,000.00</u>	2,00,000.00
To Depreciation (Annex-III)	7,21,100.30					
To Excess of income over exp.	22,84,077.11					
Total		2,65,98,441.38		Total		2,65,98,441.38

Place: Paburia
Date: 25.10.2021


Chairman
SWATI




Secretary
SWATI


Treasurer
SWATI

For SCP & Co.
Chartered Accountants
Firm Reg. No.324601E

PANIL KUMAR PATRO
Partner
M. No.208848

Social Welfare Agency & Training Institute (SWATI)
Regd. Office At: Trinath Temple Street, PO: Gosaninuagaon, Dist: Ganjam, Pin:760003, Odisha.
Project Office: At/Po: Paburia, Dist: Kandhamal- 762112 (Odisha)

Consolidated Receipts & Payments Account for the Year ending 31st, March 2021

Receipts		Amount (Rs)	Amount(Rs)	Payments		Amount (Rs)	Amount (Rs)
To	Opening Balance (Annex- I)			By	Programme Expenses (As per Annexure-I)		
	Cash in Hand	20,674.25			MNCP	13,36,196.00	
	Balance with Bank	40,85,898.02	41,06,572.27		Back to Basics- SC, Italy	22,80,040.00	
To	Grants-in-Aid (As per Annexure-I)				PRACDIP- 2021 (CRY-AM)	3,95,271.00	
	MNCP	13,21,027.00			PRACDIP-2020 (CRY-Kol)	10,10,284.00	
	Back to Basics	21,50,043.00			PRACDIP-2021 (CRY-AM)	3,67,840.00	
	PRACDIP-2021 (CRY-AM)	3,95,271.00			COVID-19 DR (OTG)	1,53,438.00	55,43,069.00
	PRACDIP-2020 (CRY-Kol)	8,77,100.00			WADI (Project)	10,14,677.00	
	PRACDIP-2021 (CRY-AM)	10,27,564.00			Delivery Van	8,06,304.50	
	COVID-19 DR (OTG)	1,53,300.00	59,24,305.00		Delivery Van- 2019-20 Payable	11,100.00	
	WADI (Project)	9,81,861.00			Bike Ambulance	1,10,593.50	
	Delivery Van	11,36,000.00			Bike Ambulance- 2019-20 Payable	24,000.00	
	Bike Ambulance	2,40,000.00			TI-FSW, Phulbani	12,47,748.50	
	TI-FSW, Phulbani	12,87,448.00			MWH, Balandapada	12,98,362.52	
	MWH, Balandapada	13,53,129.00			FADP, Baliguda	14,67,500.00	
	FADP, Baliguda	14,35,000.00			FADP, Phulbani	3,90,000.00	
	FADP, Phulbani	3,82,500.00			Diversion Based Irrigation, SDTT, Mumbai	5,32,159.36	
	DBI, SDTT, Mumbai	26,45,000.00			NULM	3,28,442.00	
	NULM	16,62,000.00			OFSDP (Muzagada)	11,27,500.00	
	OFSDP (Muzagada)	11,26,393.00			OFSDP (Jagannathprasad)	11,40,000.00	
	OFSDP (Jagannathprasad)	12,32,000.00			OFSDP (Central)	5,45,000.00	
	OFSDP (Central)	4,57,870.00			OFSDP (Tarsing)	3,08,779.00	
	OFSDP (Tarsing)	2,07,162.00			Millet Promotion	10,90,956.50	
	Millet Promotion	10,40,000.00			FPO Promotion	7,77,900.50	
	FPO Promotion	7,47,000.00			E-Library	4,76,400.00	
	E-Library	5,60,000.00			AVI/SSEID- NIOS	2,475.00	
	AVI/SSEID- NIOS	2,475.00			Role of GP in Health & Nutrition (SIRD)	1,42,700.00	
	IRRI-ODISHA Govt. Collaborative	63,200.00			Gender Sensitive GPDP Training-2019-20	81,408.00	
	Gender Sensitive GPDP Training	81,408.00			Maternity Waiting Home, Tikabali	12,91,266.50	
	Maternity Waiting Home, Tikabali	13,89,504.00			Maternity Waiting Home, Katringia	13,48,056.00	
	Maternity Waiting Home, Katringia	13,89,504.00	1,94,19,454.00		Sweekruti	45,845.00	
					MWH, Balandapada-2019-20 Payable	1,84,925.00	
					WADI (Adm)	51,000.00	1,58,45,098.88
To	Other Receipts			By	TDS Deposited (FC)	3,534.00	3,534.00
	Bank Interest			By	PT Deposited (FC)	9,675.00	9,675.00
	MNCP	9,281.00		By	TDS Deposited (IC)	7,322.00	7,322.00
	Back to Basics	7,946.00		By	Bank Interest Refunded:		
	PRACDIP-2020 (CRY-Kol)	4,595.00			NABARD (WADI Proj)	19,252.00	
	COVID-19 DR (OTG)	138.00	21,960.00		NABARD (WADI-Adm)	80.00	
	WADI (Project)	4,371.00			Odisha Millet Mission	32,890.00	52,222.00
	TI-FSW, Phulbani	2,558.00		By	TDS deducted by Donor		
	MWH, Balandapada	7,312.00			NULM	1,40,400.00	
	Millet Promotion	33,878.00			OFSDP (Muzagada)	22,528.00	
	Maternity Waiting Home, Tikabali	8,617.00			OFSDP (Jagannathprasad)	24,640.00	
	Maternity Waiting Home, Katringia	11,985.00	68,721.00		OFSDP (Central)	9,157.00	
					OFSDP (Tarsing)	4,143.00	2,00,868.00
	Staff Development	11,765.00		By	Investment (Fixed Deposit)		
	Corpus Fund	2,946.00	14,711.00		Corpus Fund	35,933.00	
	Interest on Fixed Deposit				Staff Development Fund	96,538.00	1,32,471.00
	Staff Development	96,538.00		By	TDS: Interest on Fixed Deposit- Corpus Fund	2,906.00	2,906.00
	Corpus Fund	38,839.00	1,35,377.00	By	Staff Welfare (DBI) T/F to SWATI General	12,408.00	12,408.00
To	TDS Collected (FC)	3,534.00	3,534.00	By	SWATI General Payments		
To	PT Collected (FC)	9,675.00	9,675.00		Program Expenses	3,36,528.00	
To	TDS Collected (IC)	7,322.00	7,322.00		Administrative Expenses	17,27,150.68	
To	PT Collected (IC)	34,050.00	34,050.00		Professional Tax Paid	35,525.00	
To	TDS Collected (Varietal Imp. Potato)	130.00	130.00		TDS paid- Audit Fees and P & S	8,519.00	21,07,722.68
To	TDS recovered from IT Dept.				Capital Expenses		
	OFSDP (Muzagada)	93,078.00			Immovable Assets	11,66,391.00	
	OFSDP (Jagannathprasad)	30,052.00					
	NULM	2,75,268.00	3,98,398.00				



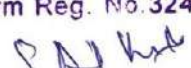
To	Paymentnt Reversed (WADI Project)	32,700.00	32,700.00	Movable Assets	1,91,120.00	13,57,511.00
To	NGO Service Charges (E-Library)	32,400.00	32,400.00	Investment/Loans & Advances		
To	Advance Realised: (Off. Rent- NULM, BAM)	1,500.00	1,500.00	Fixed Deposit- Current Reinvest (As per Annex-	20,00,000.00	
To	SWATI General Receipts			Fixed Deposit- Int Reinvest (As per Annex- V)	26,213.00	20,26,213.00
	Bank Interest	84,662.00		By TDS on Fixed Deposit Interest	1,408.00	1,408.00
	Other Receipts	15,42,860.00		Loan to Udyagi FPO	1,75,050.00	1,75,050.00
	Miscellaneous Receipts	23,38,497.00		Purchase of Bolero	10,48,046.00	10,48,046.00
	Donations and Contributions (Bolero)	10,49,016.00		Staff Advance	20,000.00	20,000.00
	Interest on Fixed Deposit	27,621.00		Advance Refunded to Udyagi FPO (LY O/S)	60,000.00	60,000.00
	TDS refunded from IT Dept.	14,272.00		Security Deposit Staff, E-Library	20,000.00	20,000.00
	Membership Fees- Board Members	11,000.00				
	Sale of Old Vehicle	15,000.00		By General (FC) Payments		
	Advance realised for Rent	19,500.00		Office Expenses	51.00	
	Professional Tax Collected	1,475.00		Bank Charges	356.36	407.36
	TDS Deducted- Audit Fees and P & S	8,519.00	51,12,422.00	Investment- Interest on FD	33,698.00	33,698.00
To	General (FC) Receipts			By Kandhamal Science Park	1,24,748.80	1,24,748.80
	Bank Interest	15,205.00		By Varietal Improvements Potato (CIP)	2,80,344.00	2,80,344.00
	Interest on Fixed Deposit	33,698.00		TDS Deposited	130.00	130.00
	Miscellaneous Receipts	32,050.00	80,953.00	By CLOSING BALANCE (As per Annexure-II)		
To	Kandhamal Science Park	5,775.00	5,775.00	Cash-in-Hand	41,449.25	
To	Varietal Improvements Potato (CIP)	2,00,000.00	2,00,000.00	Balance with Bank	65,03,657.30	65,45,106.55
	Total		3,56,09,959.27	Total		3,56,09,959.27

Place: Paburia
Date: 25.10.2021


Chairman
SWATI


Secretary
SWATI


Treasurer
SWATI

For SCP & Co.
Chartered Accountants
Firm Reg. No. 324601E

PANIL KUMAR PATRO
Partner
M. No. 208848





Project Office:

Paburia, Phulbani, Bandhagada,
G.Udayagiri, Balandapada, Tikabali,
Belaghara & Tumudibandha of
Kandhamal District

&

Bhanjanagar, Tarasing &
Jagannathprasad of Ganjam,
Butpalli of Boudh and
Bhubaneswar of Khordha District



Social Welfare Agency and
Training Institute (SWATI)

Paburia, Kandhamal – 762112, Odisha

E-mail : swati_pab@yahoo.co.in,

Website : www.swatiodisha.org